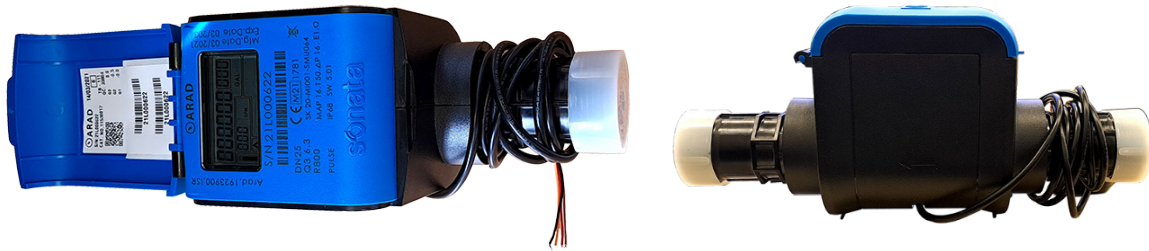


# Sonata Dual Pulse Water Meter

Multi-jet Magnetic Water Meter (P/N: 914-06-10001)



The Sonata Water Meter is an advanced and highly accurate ultrasonic water meter for agricultural applications. The Sonata's Dual Pulse output provides consumption values at a high resolution. Each of the two independent digital output channels can be configured to best match the data resolution required by the utility.

## Features

- 2 Pulse Outputs
- Each Pulse Output can be set to forward/reverse

## General Specifications

- Electronics & battery sealed
- Cable length: 1.3 meters/4.2 feet
- Environmental operation: min  $-20^{\circ}$  to  $+60^{\circ}$  C/ $-4^{\circ}$  to  $+140^{\circ}$  F
- Storage: min  $-20^{\circ}$  to  $+70^{\circ}$  C/ $-4^{\circ}$  to  $+158^{\circ}$  F
- Protection rating: IP68
- Life time= 12 Years\*
- 1 liter or 0.1 liter per pulse (
  - Rotem Pro/One, Platinum Pro/Touch, and Trio support 1 liter or 0.1 liter per pulse.
  - Platinum and AC-2000 3G support 1 liter per pulse only.

## Technical Specifications

- Outputs type Bi-Directional Solid State Relay
- On-Resistance max. 35 [ $\Omega$ ]
- Minimum pulse width 10 [msec]
- Load current (AC/DC) 120 [mA]
- Total power dissipation max. 800 [mW]
- Max voltage AC/DC 36 [V]