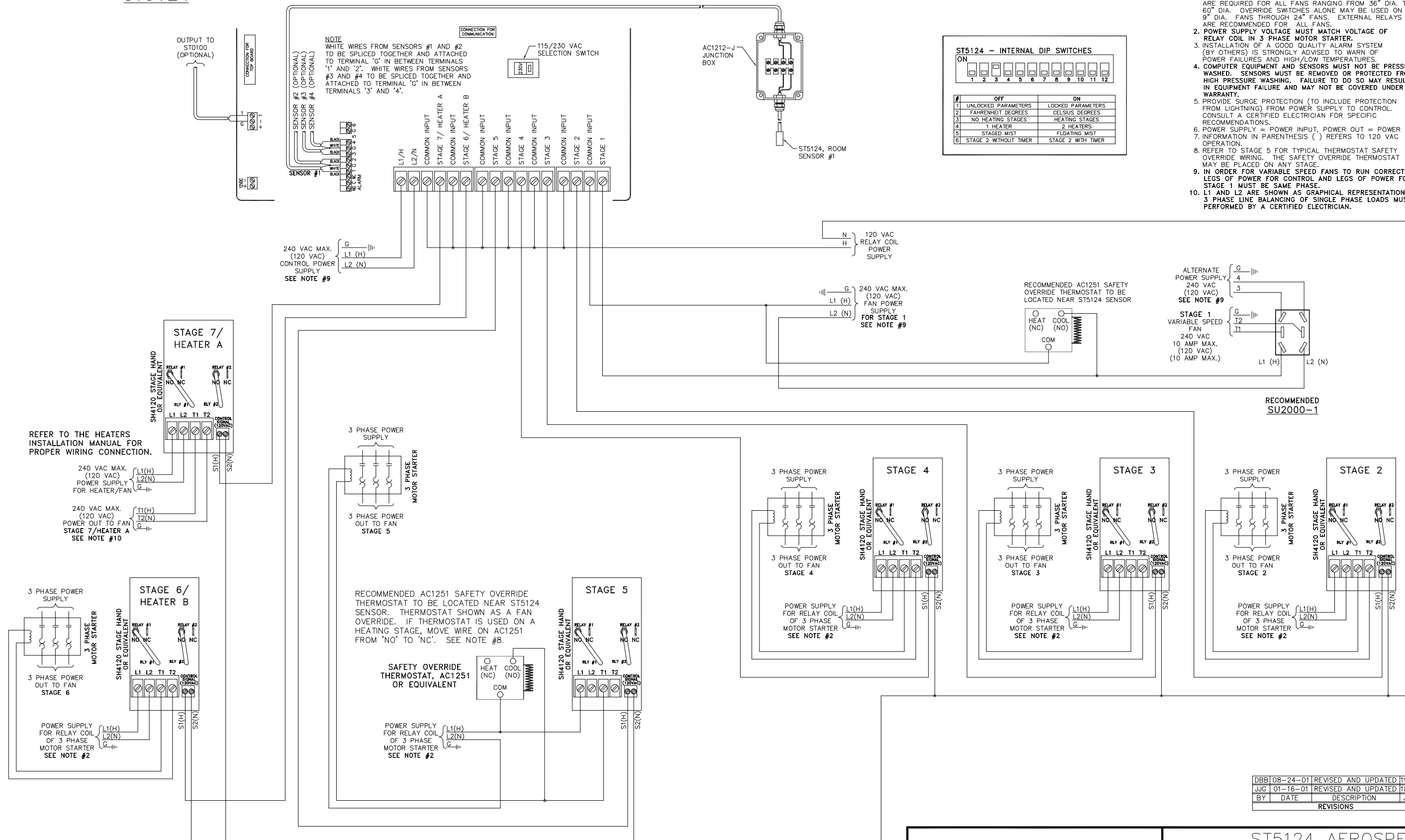


ST5124




ST5124 - INTERNAL DIP SWITCHES

#	OFF	ON
1	UNLOCKED PARAMETERS	LOCKED PARAMETERS
2	FAHRENHEIT DEGREES	CELSIUS DEGREES
3	NO HEATING STAGES	HEATING STAGES
4	1 HEATER	2 HEATERS
5	STAGED MIST	FLOATING MIST
6	STAGE 2 WITHOUT TIMER	STAGE 2 WITH TIMER

NOTES

1. AN EXTERNAL RELAY WITH A MANUAL OVERRIDE SWITCH, SUCH AS THE STAGE HAND REFERRED TO IN THIS DIAGRAM, ARE REQUIRED FOR ALL FANS RANGING FROM 36" DIA. TO 60" DIA. OVERRIDE SWITCHES ALONE MAY BE USED ON 9" DIA. FANS THROUGH 24" FANS. EXTERNAL RELAYS ARE RECOMMENDED FOR ALL FANS.
2. POWER SUPPLY VOLTAGE MUST MATCH VOLTAGE OF RELAY COIL IN 3 PHASE MOTOR STARTER.
3. INSTALLATION OF A GOOD QUALITY ALARM SYSTEM (BY OTHERS) IS STRONGLY ADVISED TO WARN OF POWER FAILURES AND HIGH/LOW TEMPERATURES.
4. COMPUTER EQUIPMENT AND SENSORS MUST NOT BE PRESSURE WASHED. SENSORS MUST BE REMOVED OR PROTECTED FROM HIGH PRESSURE WASHING. FAILURE TO DO SO MAY RESULT IN EQUIPMENT FAILURE AND MAY NOT BE COVERED UNDER WARRANTY.
5. PROVIDE SURGE PROTECTION (TO INCLUDE PROTECTION FROM LIGHTNING) FROM POWER SUPPLY TO CONTROL. CONSULT A CERTIFIED ELECTRICIAN FOR SPECIFIC RECOMMENDATIONS.
6. POWER SUPPLY = POWER INPUT, POWER OUT = POWER OUTPUT.
7. INFORMATION IN PARENTHESIS () REFERS TO 120 VAC OPERATION.
8. REFER TO STAGE 5 FOR TYPICAL THERMOSTAT SAFETY OVERRIDE WIRING. THE SAFETY OVERRIDE THERMOSTAT MAY BE PLACED ON ANY STAGE.
9. IN ORDER FOR VARIABLE SPEED FANS TO RUN CORRECTLY, LEGS OF POWER FOR CONTROL AND LEGS OF POWER FOR STAGE 1 MUST BE SAME PHASE.
10. L1 AND L2 ARE SHOWN AS GRAPHICAL REPRESENTATION ONLY. 3 PHASE LINE BALANCING OF SINGLE PHASE LOADS MUST BE PERFORMED BY A CERTIFIED ELECTRICIAN.

DBB	08-24-01	REVISED AND UPDATED	1985
JUG	01-16-01	REVISED AND UPDATED	1880
BY	DATE	DESCRIPTION	J.N.
REVISIONS			



ST5124 AEROSPEED 1.6
WIRING DIAGRAM - THREE PHASE POWER

DATE 06-23-98	CHECKED BY RLD	REP. -
SCALE NTS	DRAWN BY DBB	JOB NO. 1455
Aerotech, Inc. 4215 Legion Drive, Mason, MI 48854-1036 USA Toll-free: 800-227-2376 · Local: 517-676-7070 · Fax: 517-676-7078		DRAWING NO. WC-98-110B

This plan is the exclusive property of Aerotech, Inc. and is authorized for use by Aerotech representatives and customers only. ©Copyright 2001, Aerotech, Inc.