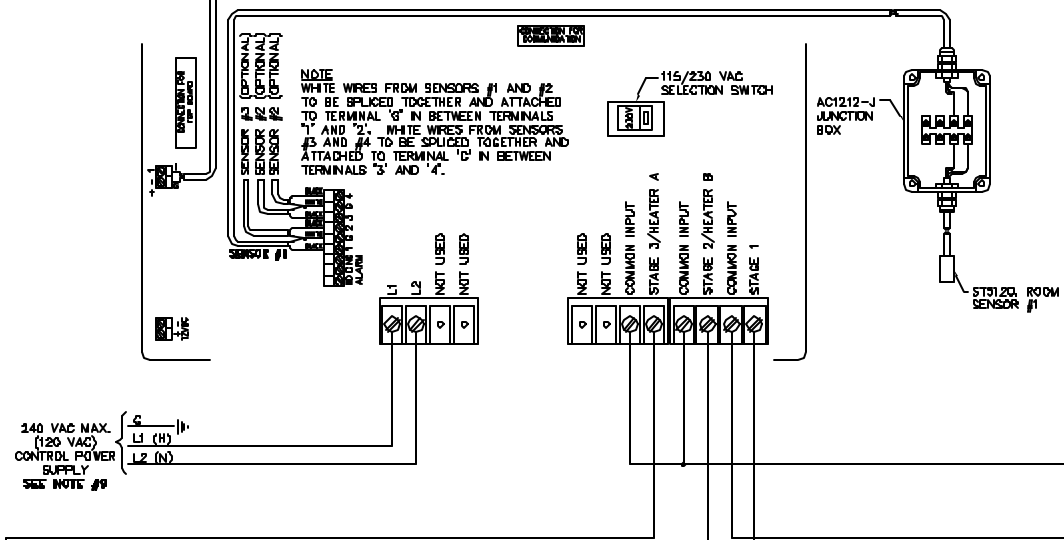
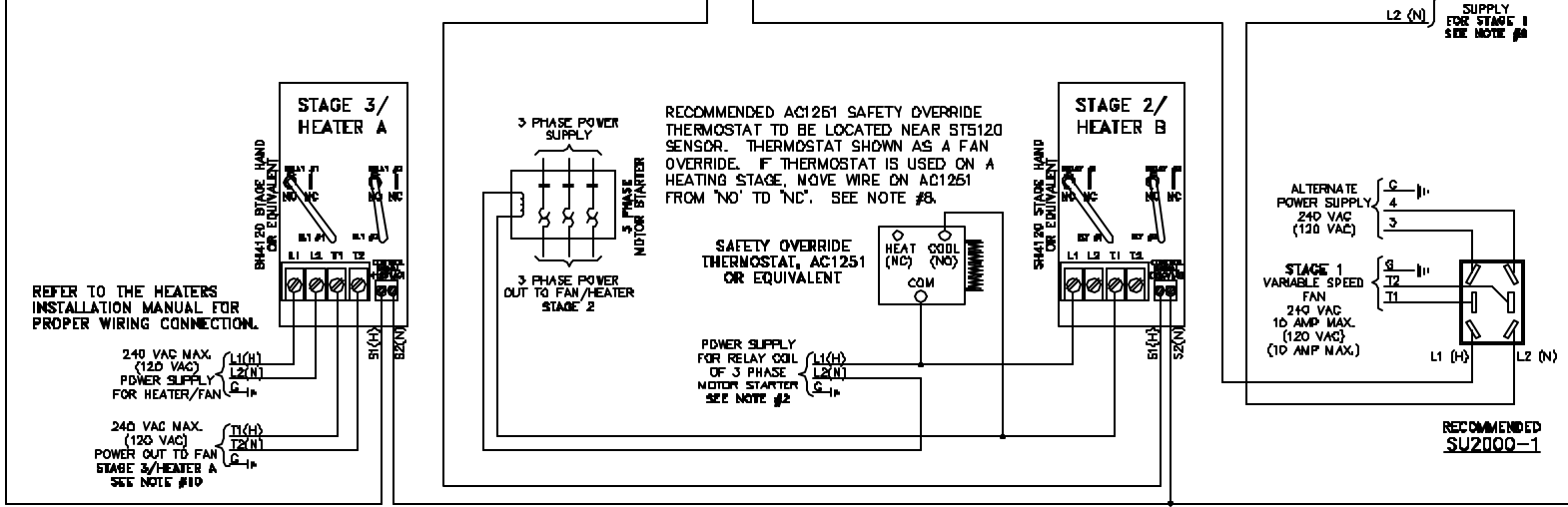


ST5120



NOTES

1. AN EXTERNAL RELAY WITH A MANUAL OVERRIDE SWITCH, SUCH AS THE STAGE HAND REFERRED TO IN THIS DIAGRAM, ARE REQUIRED FOR ALL FANS RANGING FROM 36" DIA. TO 60" DIA. OVERRIDE SWITCHES ALONE MAY BE USED ON 9" DIA. FANS THROUGH 24" FANS. EXTERNAL RELAYS ARE RECOMMENDED FOR ALL FANS.
2. POWER SUPPLY VOLTAGE MUST MATCH VOLTAGE OF RELAY COIL IN 3 PHASE MOTOR STARTER.
3. INSTALLATION OF A GOOD QUALITY ALARM SYSTEM (BY OTHERS) IS STRONGLY ADVISED TO WARN OF POWER FAILURES AND HIGH/LOW TEMPERATURES.
4. COMPUTER EQUIPMENT AND SENSORS MUST NOT BE PRESSURE WASHED. SENSORS MUST BE REMOVED OR PROTECTED FROM HIGH PRESSURE WASHING. FAILURE TO DO SO MAY RESULT IN EQUIPMENT FAILURE AND MAY NOT BE COVERED UNDER WARRANTY.
6. PROVIDE SURGE PROTECTION (TO INCLUDE PROTECTION FROM LIGHTNING) FROM POWER SUPPLY TO CONTROL. CONSULT A CERTIFIED ELECTRICIAN FOR SPECIFIC RECOMMENDATIONS.
6. POWER SUPPLY = POWER INPUT, POWER OUT = POWER OUTPUT.
7. INFORMATION IN PARENTHESIS () REFERS TO 120 VAC OPERATION.
8. REFER TO STAGE 2 FOR TYPICAL THERMOSTAT SAFETY OVERRIDE WIRING. THE SAFETY OVERRIDE THERMOSTAT MAY BE PLACED ON ANY STAGE.
8. IN ORDER FOR VARIABLE SPEED FANS TO RUN CORRECTLY, LEGS OF POWER FOR CONTROL AND LEGS OF POWER FOR STAGE 1 MUST BE SAME PHASE.
10. L1 AND L2 ARE SHOWN AS GRAPHICAL REPRESENTATION ONLY. 3 PHASE LINE BALANCING OF SINGLE PHASE LOADS MUST BE PERFORMED BY A CERTIFIED ELECTRICIAN.



JUL 01-17-01	REVISED AND UPDATED	1880
BY	DATE	DESCRIPTION
		REVISIONS



Aerotech, Inc. 4215 Legion Drive, Mason, MI 48854-1036 USA
 Toll-free: 800-227-2376 - Local: 517-676-7070 - Fax: 517-676-7078

ST5120 AEROSPEED 1.2 WIRING DIAGRAM - THREE PHASE POWER

DATE	01-15-99	CHECKED BY	RLD	REP.	-
SCALE	NTS	DRAWN BY	DBB	JOB NO.	1455
This plan is the exclusive property of Aerotech, Inc. and is authorized for use by Aerotech representatives and customers only. ©Copyright 2001, Aerotech, Inc.					DRAWING NO.
					WC-98-343B