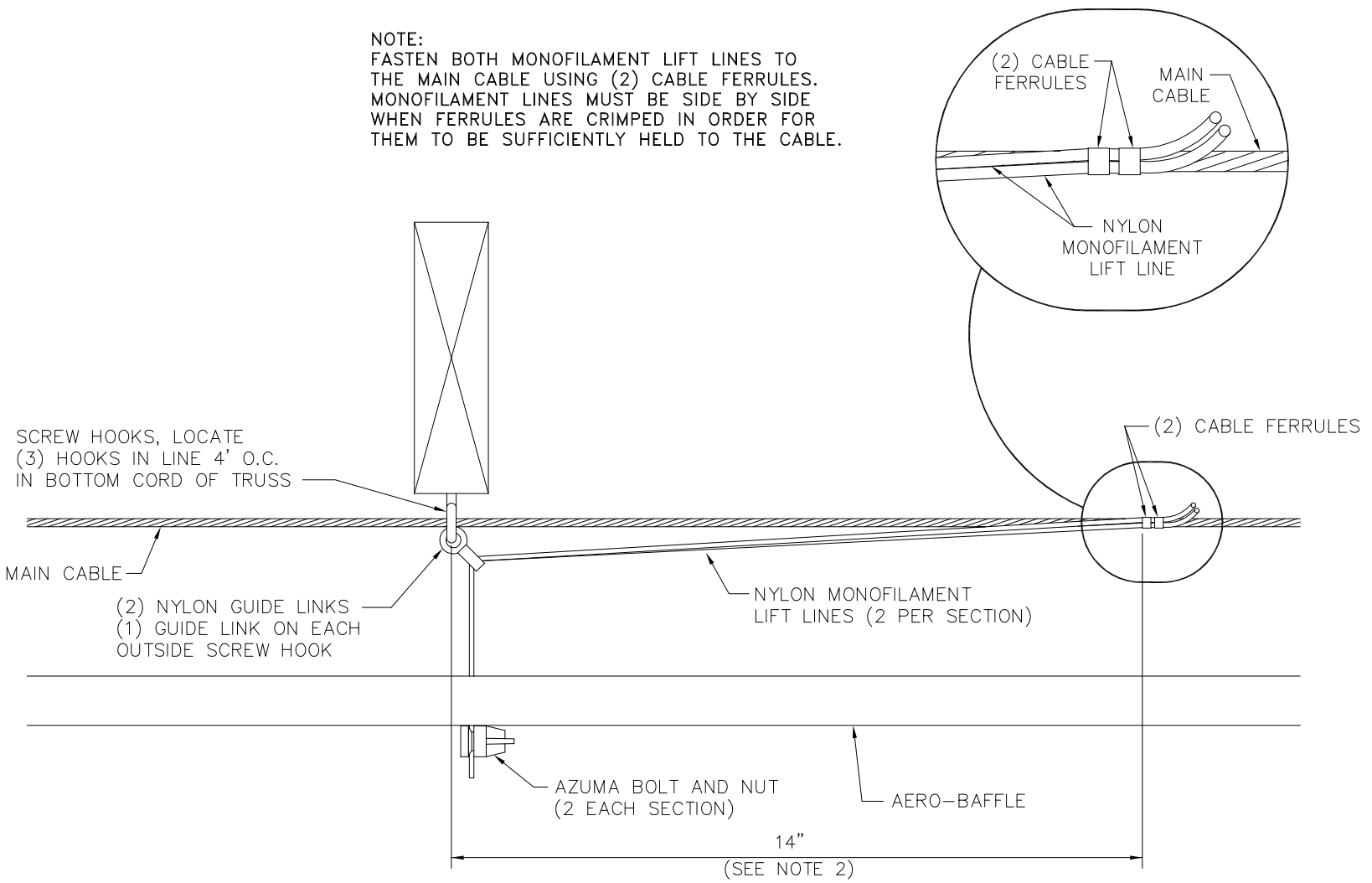


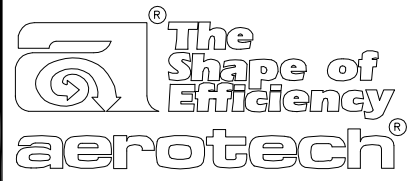
NOTE:
 FASTEN BOTH MONOFILAMENT LIFT LINES TO
 THE MAIN CABLE USING (2) CABLE FERRULES.
 MONOFILAMENT LINES MUST BE SIDE BY SIDE
 WHEN FERRULES ARE CRIMPED IN ORDER FOR
 THEM TO BE SUFFICIENTLY HELD TO THE CABLE.



- NOTES:
1. INITIAL STARTING POSITION IS WITH BAFFLE FULLY CLOSED.
 2. FASTEN CABLE FERRULES 14" FROM SCREW HOOKS IN DIRECTION OF ACTUATOR OR WINCH.

DIRECTION OF ACTUATOR
 OR WINCH →

CP4SA-C

 AEROTECH, INC. Lansing, MI 48906	DATE: 3-9-92	CP4SA-C ADJUSTMENT PACKAGE INSTALLATION DETAIL	
	SCALE: NTS		
	DRAWN BY: MDR	REVISIONS	J.N. 039
	CHK'D BY: RLD		DRAWING NO.:
FILE: IB92-078.DWG		IB-92-078	