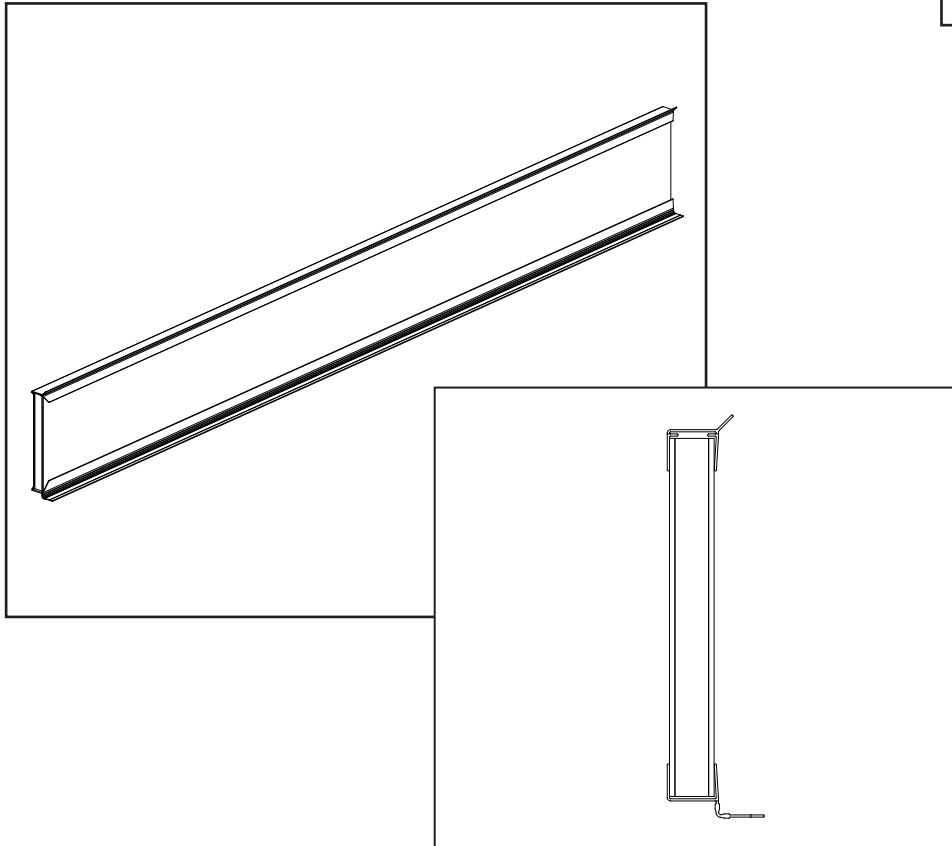


AERO-BAFFLE Continuous Inlet Doors

Instruction Manual



AERO-BAFFLE Inlet Doors

Models: Continuous Inlets:
CI0896 • CI1296 • CI1696
Center Continuous Inlets:
CI0896CC • CI1296CC • CI1696CC
Center Intermittent Inlets:
CI0896CI • CI1296CI • CI1696CI



Aero-Baffle Instructions for Use and Maintenance

Thank You:

Thank you for purchasing a Munters Aero-Baffle Inlet. Munters equipment is designed to be the highest performing, highest quality equipment you can buy. With the proper installation and maintenance it will provide many years of service.

Please Note:

To achieve maximum performance and insure long life from your Munters product it is essential that it be installed and maintained properly. Please read all instructions carefully before beginning installation.

Warranty:

For Warranty claims information see the "Warranty Claims and Return Policy" form QM1021 available from the [Munters Corporation office at 1-800-227-2376](http://www.munters.com) or by e-mail at aghort.info@munters.com.

Conditions and Limitations:

- Products and Systems involved in a warranty claim under the "Warranty Claims and Return Policy" shall have been properly installed, maintained and operated under competent supervision, according to the instructions provided by Munters Corporation.
- Malfunction or failure resulting from misuse, abuse, negligence, alteration, accident or lack of proper installation or maintenance shall not be considered a defect under the Warranty.

Index

Chapters	Page
1. Unpacking the Equipment	4
1.1 Unpacking the Equipment	4
1.2 Configurations	4
2. Installation Instructions	5
2.1 Cabling	5
2.2 Baffle Installation	8
3. Exploded View and Parts List	9

Unpacking the Equipment

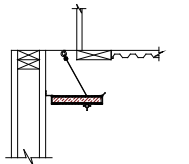
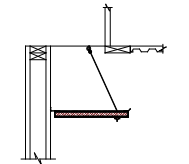
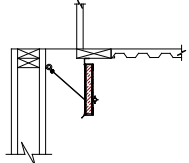
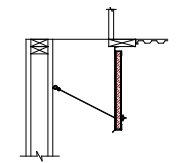
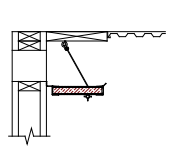
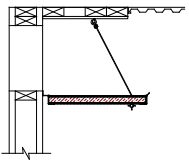
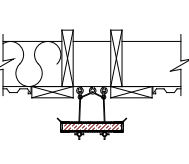
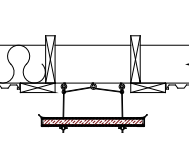
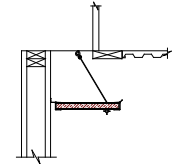
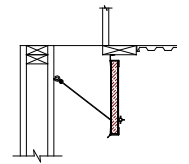
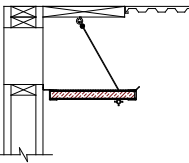
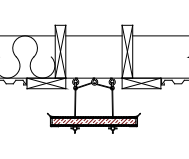
1.

1.1 Unpacking the Equipment

Before beginning installation, check the overall condition of the equipment. Remove packing materials, and examine all components for signs of shipping damage. Any shipping damage is the customer's responsibility and should be reported immediately to your freight carrier.

1.2 Configurations

Using the Table below, make sure that you are working with the correct drawing detail for the style and type of baffle that you are going to be using.

	CI0896 - Sidewall mounted Aero-Baffle, closing against the ceiling with a thru the ceiling slot. Drawing - IB-05-024		CI1696 - Sidewall mounted Aero-Baffle, closing against the ceiling with a thru the ceiling slot. Drawing - IB-05-030
	CI0896 - Ceiling mounted Aero-Baffle closing against the ceiling with a thru the wall slot. Drawing - IB-05-025		CI1696 - Ceiling mounted Aero-Baffle closing against the ceiling with a thru the wall slot. Drawing - IB-05-031
	CI0896 - Sidewall mounted Aero-Baffle, closing against the ceiling with a thru the wall slot. Drawing - IB-05-026		CI1696 - Sidewall mounted Aero-Baffle, closing against the ceiling with a thru the wall slot. Drawing - IB-05-032
	CI0896CC / CI0896CI - Center Inlet top insulated Aero-Baffle Drawing - IB-05-035		CI1696CC / CI1696CI - Center Inlet top insulated Aero-Baffle Drawing - IB-05-037
	CI1296 - Sidewall mounted Aero-Baffle, closing against the ceiling with a thru the ceiling slot. Drawing - IB-05-027		
	CI1296 - Ceiling mounted Aero-Baffle closing against the ceiling with a thru the wall slot. Drawing - IB-05-028		
	CI1296 - Sidewall mounted Aero-Baffle, closing against the ceiling with a thru the wall slot. Drawing - IB-05-029		
	CI1296CC / CI1296CI - Center Inlet top insulated Aero-Baffle Drawing - IB-05-036		

Installation Instructions

2.

2.1 Cabling

Step 1

Measure length of room and start baffle assembly an equal distance from each endwall. Example 49' room - 48' baffle = 1' divided by 2 = 6" from each endwall. Place a mark on the wall or ceiling at each point.

Step 2

Using the detailed drawing of the baffle, locate where the screw hook(s) should be mounted and snap a chalk line on wall, ceiling or closure board, the full length of the room between each set of marks.

Step 3

Install screw hooks along chalk line 48" apart, starting 24" from mark for end of baffle.

Step 4

Check for proper clearance between screw hooks with a piece of 8' baffle.

Step 5

Attach pulleys in line with screw hooks at each endwall. [See Figure 3.](#)

Step 6

If a Cable Adjustment Package is used [See Figure 1](#) and Notes. If a Rod Adjustment Package is used [See Figure 2](#) and Notes.

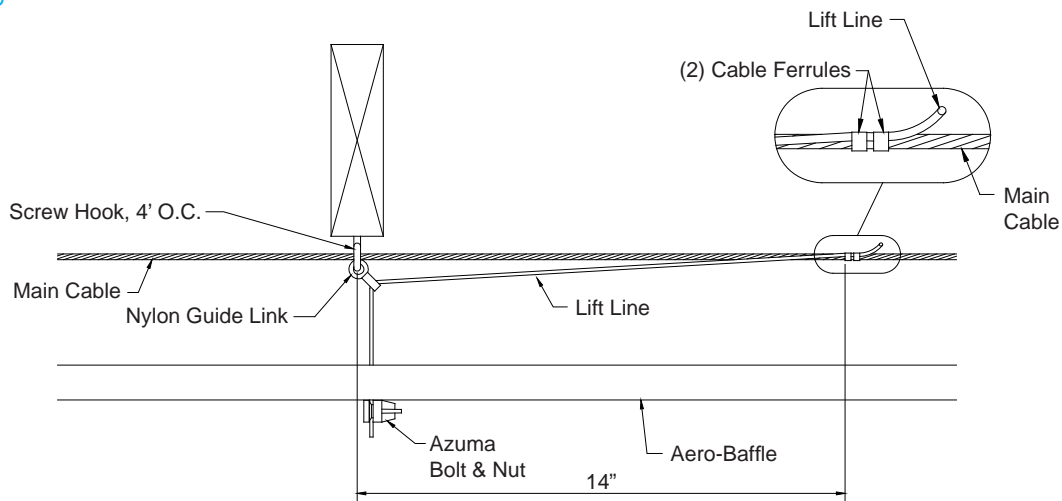


Figure 1

NOTES for Figure 1:

- Pull main cable from winch through pulleys and screw hooks to weights or return springs on opposite endwall. [See Figure 3 and 5.](#) Be sure to coil approximately 1 ft. of cable on winch.
- Attach one lift line to main cable using (2) cable ferrules (supplied) and pliers. Lift lines should be attached 14" back from hook toward the winch end.
- Put a nylon guide link (black) on each screw hook.
- Run each lift line through the adjacent nylon guide link.

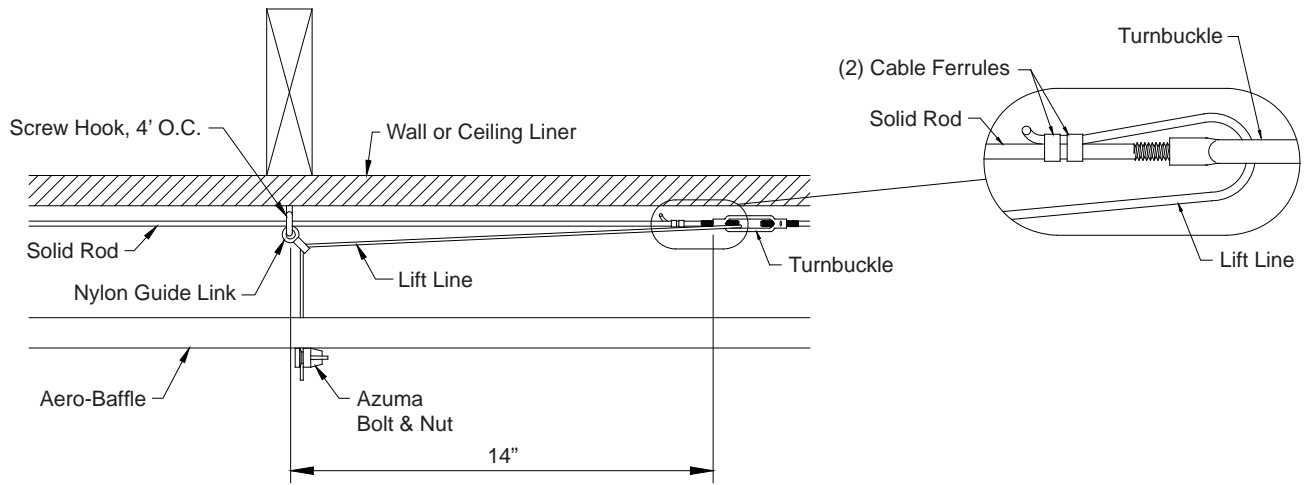


Figure 2

NOTES for Figure 2:

- A. Screw turnbuckles halfway onto first rod section and insert rod through first screw hook with the turnbuckle towards the winch end. Then screw another turnbuckle on to the end of the second rod section and insert rod through second screw hook. Thread that rod and turnbuckle to the previous rod section.
- B. Repeat Step A for the full length of the baffle. Once the last rod section is in place, thread the last turnbuckle to the end of rod sections opposite the winch.
- C. Pull cable from winch through pulley (See Figure 3) and loop through first turnbuckle and fasten it to itself with cable clamps. See Figure 4. Be sure to coil approximately 1' of cable on winch.
- D. Loop another section of cable through last turnbuckle and fasten it to itself with cable clamps. Fasten other end of cable to weights or return spring. See Figure 5.
- E. Put nylon guide link (black) on each screw hook.
- F. Run each lift line through the adjacent nylon guide link.

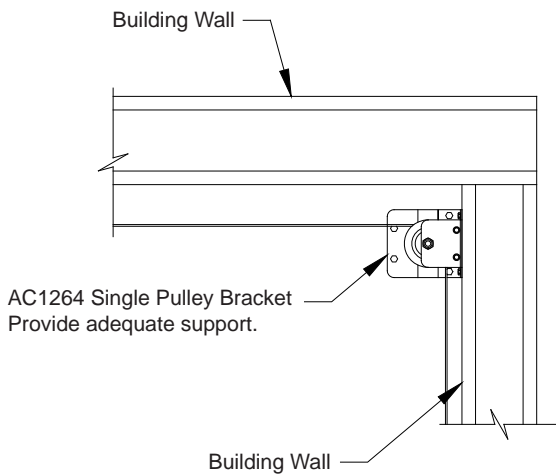


Figure 3

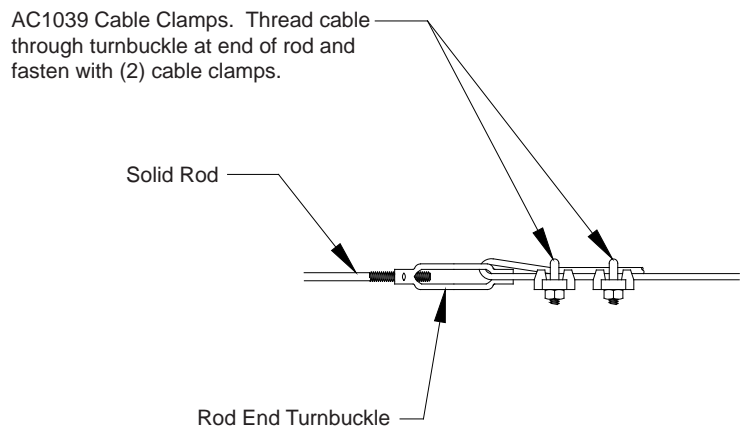


Figure 4

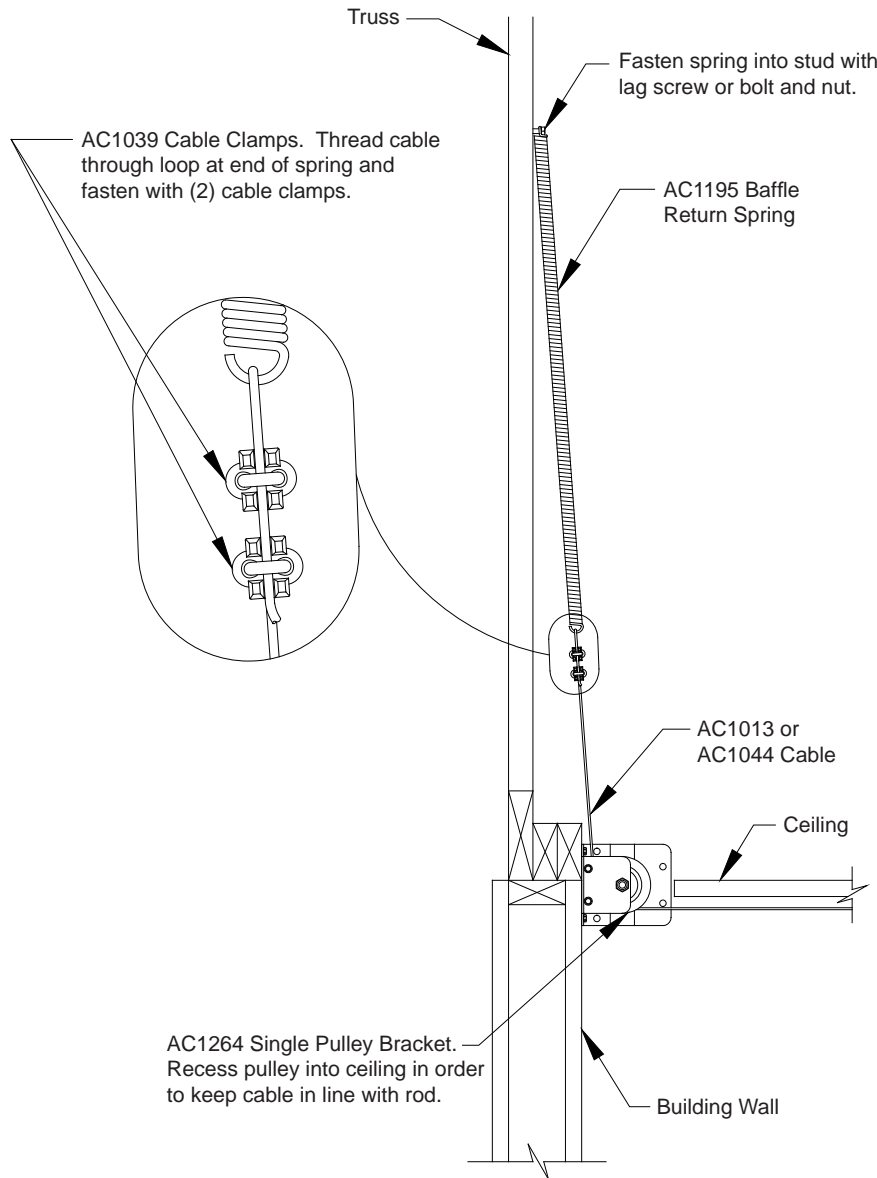


Figure 5

Step 7

Using the detailed drawing of the baffle, locate where the baffle flexible hinge should be located and snap a chalk line on ceiling, wall or nailer board, the full length of the room between each set of marks.

For Clxx96CC (Center Continuous Inlet) go to [Step 8](#).
 For Clxx96CI (Center Intermittent Inlet) skip to [Step 11](#).

2.2 Baffle Installation

Step 8

Position first piece of baffle, so the flexible hinge is aligned with the chalk line and the start of baffle run. Fasten hinge in place with fasteners 3½" apart. See Figure 6.

Step 9

Slide the next baffle section into the I-Beam of the adjacent baffle section and fasten in place and secure I-Beam using (4) Screw provided. See Figure 7.

Note: When installing baffle in temperatures BELOW 40°F, maintain a ¼" gap between baffle sections.

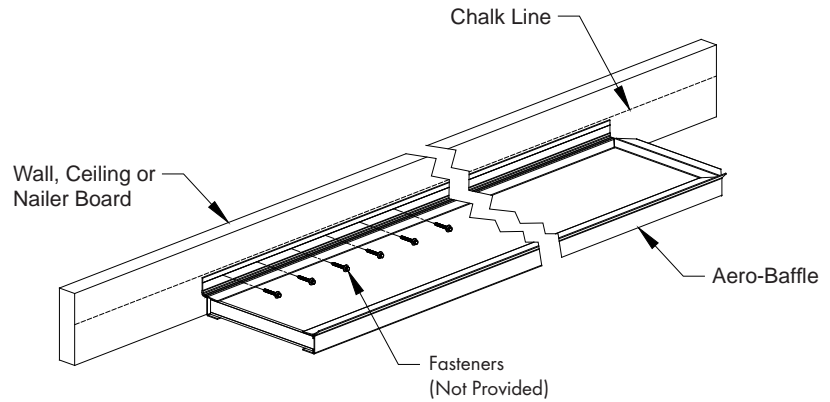


Figure 6

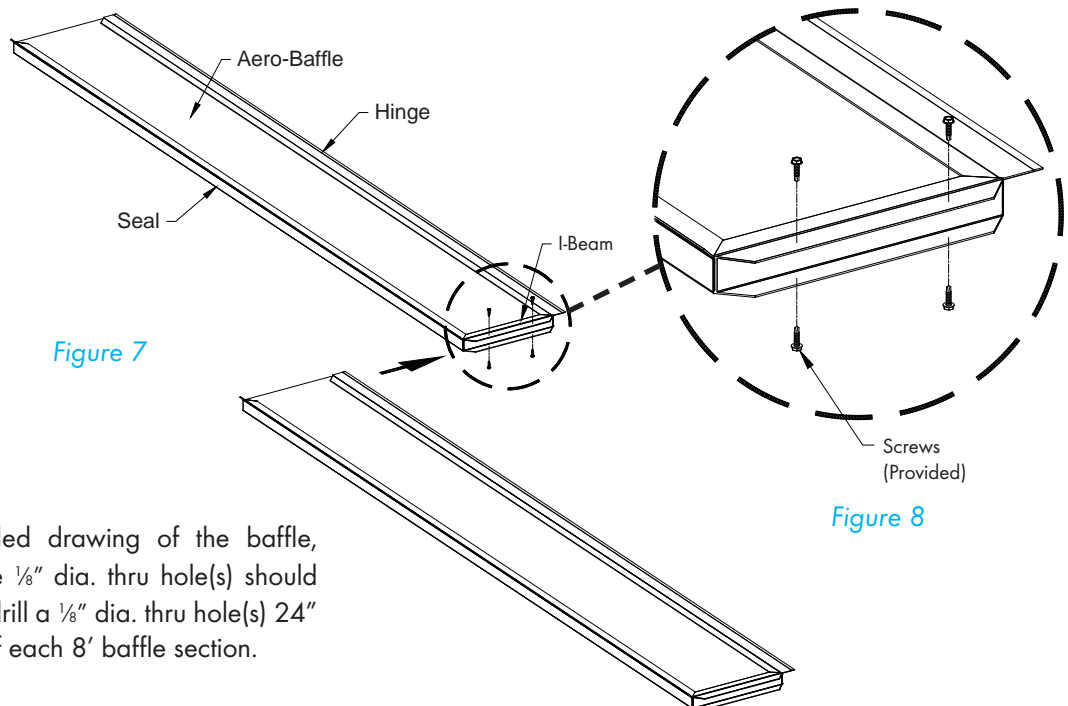


Figure 7

Figure 8

Step 10

Using the detailed drawing of the baffle, locate where the ⅛" dia. thru hole(s) should be located and drill a ⅛" dia. thru hole(s) 24" from each end of each 8' baffle section.

Step 11

Hang sections by running lift lines through ⅛" dia. hole in the baffle section and fasten with azuma bolt and nut. See Figure 7.

Step 12

Repeat Steps 9, 10 and 11 until reaching the end of the baffle run. For Clxx96Cl, repeat Steps 10 and 11, and reference Figure 8.

Step 13

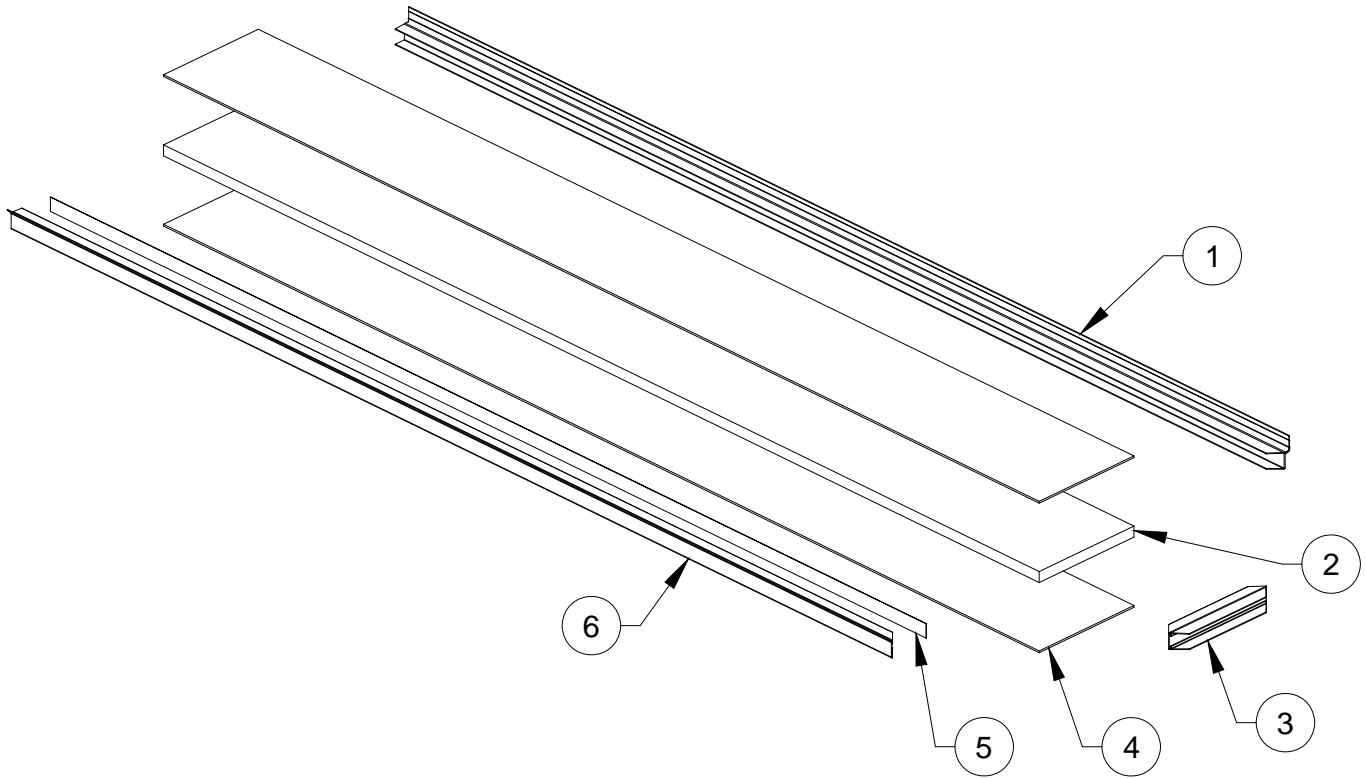
With the winch at its fully closed position, go back, check and readjust baffle tightly to ceiling or closure board. Use winch or baffle machine to open and close baffle a few times to make sure baffle moves smoothly and remains even over the total length of the baffle.

Step 14

Optional End Kits for Continuous inlets. Install end seals using 4 screws (provided), at the end of each run. See Figure 8.

Exploded View and Parts List

3.



Item	Catalog Number			Part Number / Description	Qty.
	8"	12"	16"		
1	CI0896	CI1296	CI1696	AC1652 Hinge Extrusion, Partial Mitter, 96"L, BLK PVC	1
2	AC2260	AC2262	AC1674	AC2260 Foam Insert, 95.5"L, PLYSTYRN	1
3	AC2124	AC2125	AC2132	AC2124 I-Beam Extrusion, CI, BLK PVC	1
4	AC2450	AC2452	AC2454	AC2450 Cover Insert, 4mm, 95.5"L, WHT PVC	2
5	AC6592	AC6592	AC6592	AC6592 Flat Stiffener, 95.5"L x 1.25"W, 18GA, GZ	1
6	AC1638	AC1638	AC1638	AC1638 Edge Seal, Mittered, 96"L, BLK PVC	1

*Contact Office for replacement part numbers for your fan configuration.

Aero-Baffle is developed and produced by Munters Corporation, Lansing, Michigan U.S.A. 1-800-227-2376

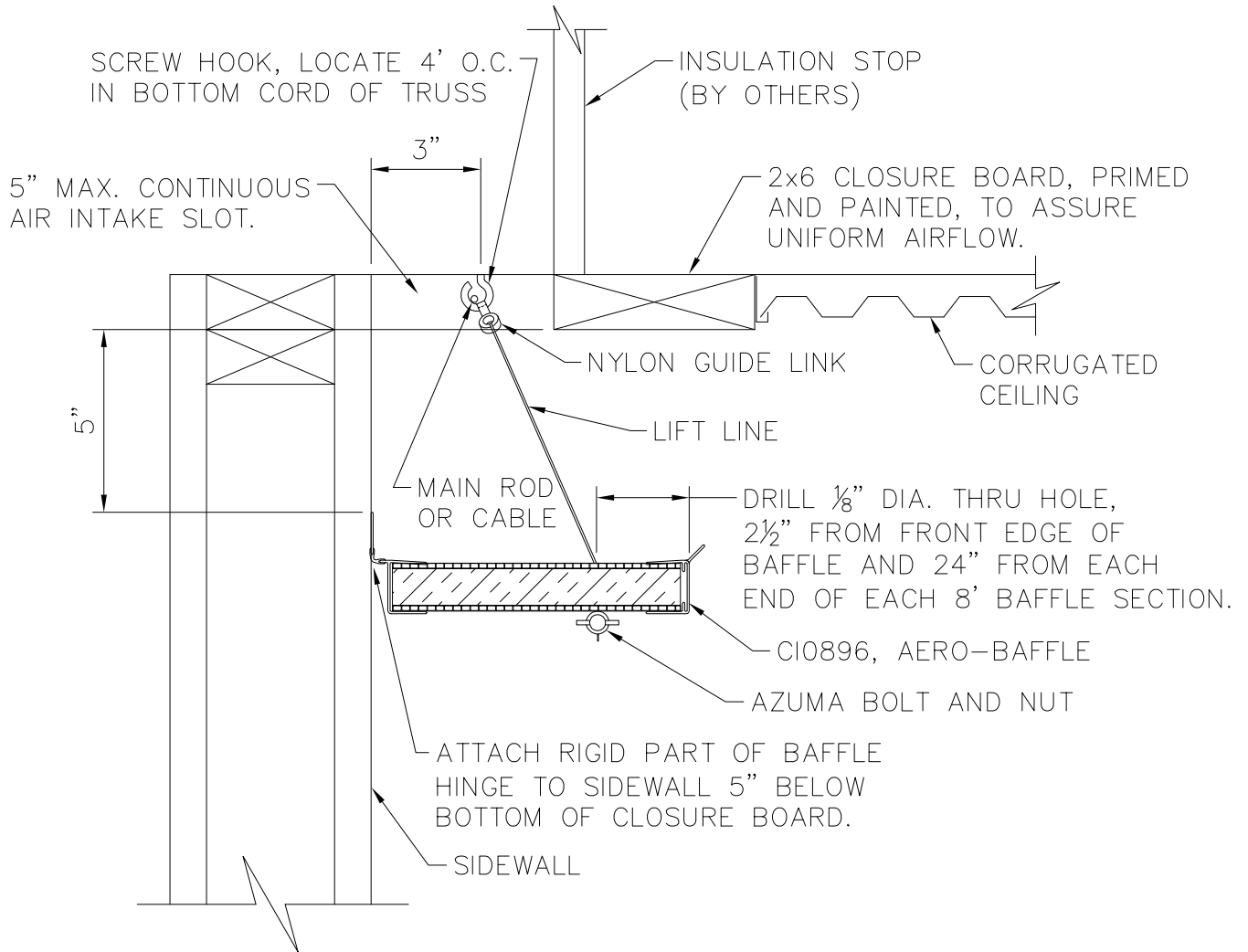


Munters Europe AB, Isafjordsgatan 1, P.O. Box 1150, SE-164 26 Kista, Sweden. Phone +46 08 626 63 00, Fax +46 8 754 56 66.

Munters Corporation 2691 Ena Drive Lansing, MI 48917 U.S.A. Phone +1 800-227-2376, Fax +1 517-676-7078

www.munters.us

Australia Munters Pty Limited, Phone +61 2 6025 6422, **Brazil** Munters Brasil Industria e Comercio Ltda, Phone +55 41 3317 5050, **Canada/US** Munters Corporation Lansing, MI Phone +1 517 676 7070, **China** Munters Air Treatment Equipment (Beijing) Co. Ltd, Phone +86 10 80 481 121, **Denmark** Munters A/S, Phone +45 9862 3311, **India** Munters India, Phone +91 20 3052 2520, **Indonesia** Munters, Phone +62 818 739 235, **Italy** Munters Italy S.p.A., Chiusavecchia, Phone +39 0183 52 11, **Japan** Munters K.K., Phone +81 3 5970 0021, **Korea** Munters Korea Co. Ltd., Phone +82 2 761 8701, **Mexico** Munters Mexico, Phone +52 818 262 54 00, **Russia** Munters AB, Phone +7 812 448 5740, **Singapore** Munters Pte Ltd., Phone +65 744 6828, **South Africa and Sub-Sahara Countries** Munters (Pty) Ltd., Phone +27 11 997 2000, **Spain** Munters Spain S.A., Phone +34 91 640 09 02, **Sweden** Munters AB, Phone +46 8 626 63 00, **Thailand** Munters Co. Ltd., Phone +66 2 642 2670, **Turkey** Munters Form Endüstri Sistemleri A.Ş, Phone +90 322 231 1338, **USA** Munters Corporation Lansing, MI Phone +1 517 676 7070, **Vietnam** Munters Vietnam, Phone +84 8 3825 6838, **Export & Other countries** Munters Italy S.p.A., Chiusavecchia Phone +39 0183 52 11



INSTALLATION NOTES:

ALLOW FOR THERMAL EXPANSION WHEN ASSEMBLING DOORS IN A TEMPERATURE LESS THAN 40°F BY LEAVING A 1/8" TO 1/4" GAP BETWEEN THE DOORS. THIS WILL ALLOW FOR NECESSARY EXPANSION.



Munters

Your Perfect Climate

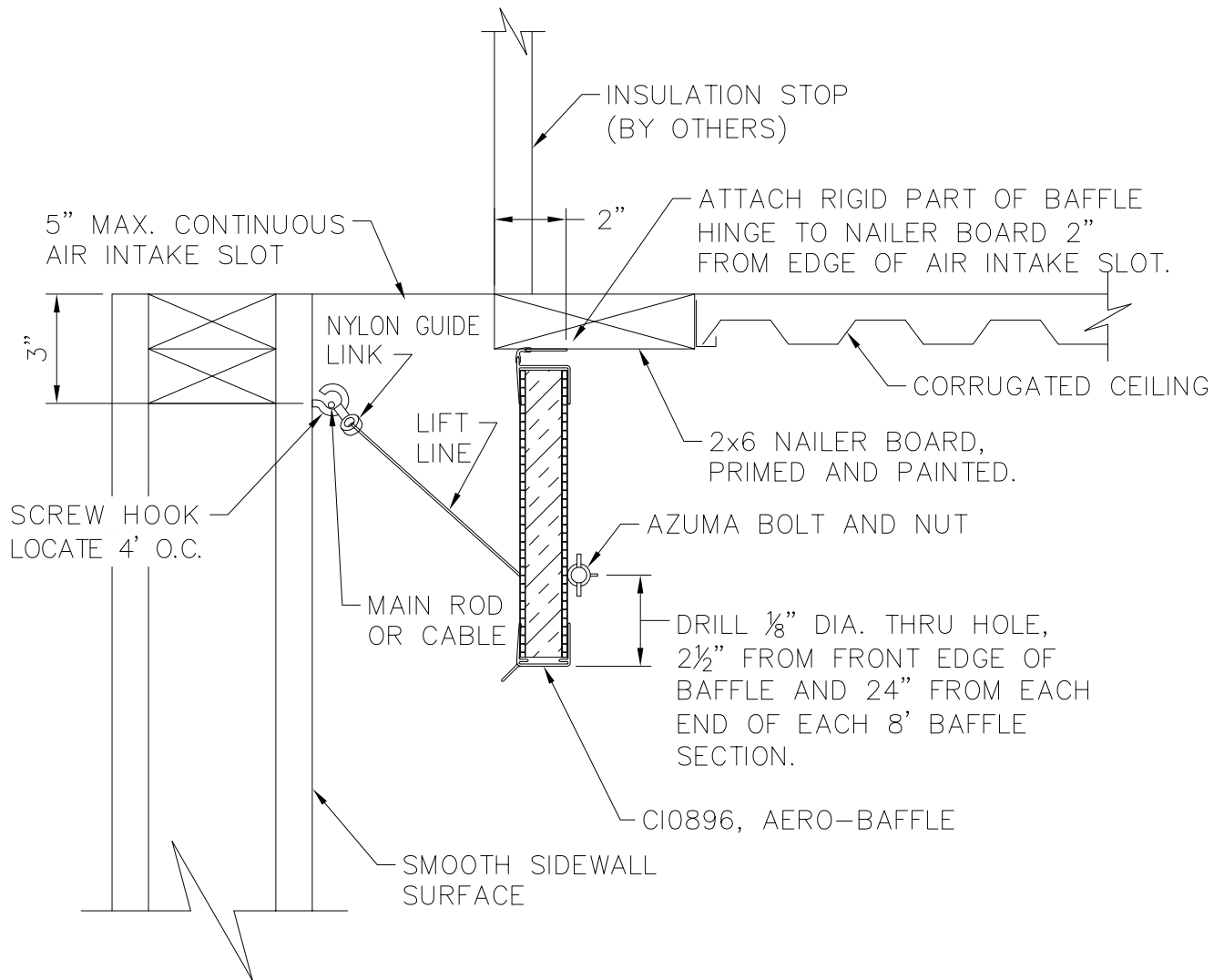
www.munters.us

Munters Corporation 2691 Ena Drive, Lansing, MI 48917-8521 USA
Toll-free: 800-227-2376 · Local: 517-676-7070 · Fax: 517-676-7078

SIDEWALL MOUNTED, CI0896
AERO-BAFFLE – CEILING SLOT

DATE	03-22-06	SCALE	NTS
DRAWN BY	DBB	JOB NO.	2237
CHECKED BY	RLD	DRAWING NO.	IB-05-024
© Copyright 2018, Munters			

DBB	01-04-18	REVISED AND UPDATED	2900
BY	DATE	DESCRIPTION	J.N.
REVISIONS			



INSTALLATION NOTES:

ALLOW FOR THERMAL EXPANSION WHEN ASSEMBLING DOORS IN A TEMPERATURE LESS THAN 40°F BY LEAVING A 1/8" TO 1/4" GAP BETWEEN THE DOORS. THIS WILL ALLOW FOR NECESSARY EXPANSION.



Munters

Your Perfect Climate

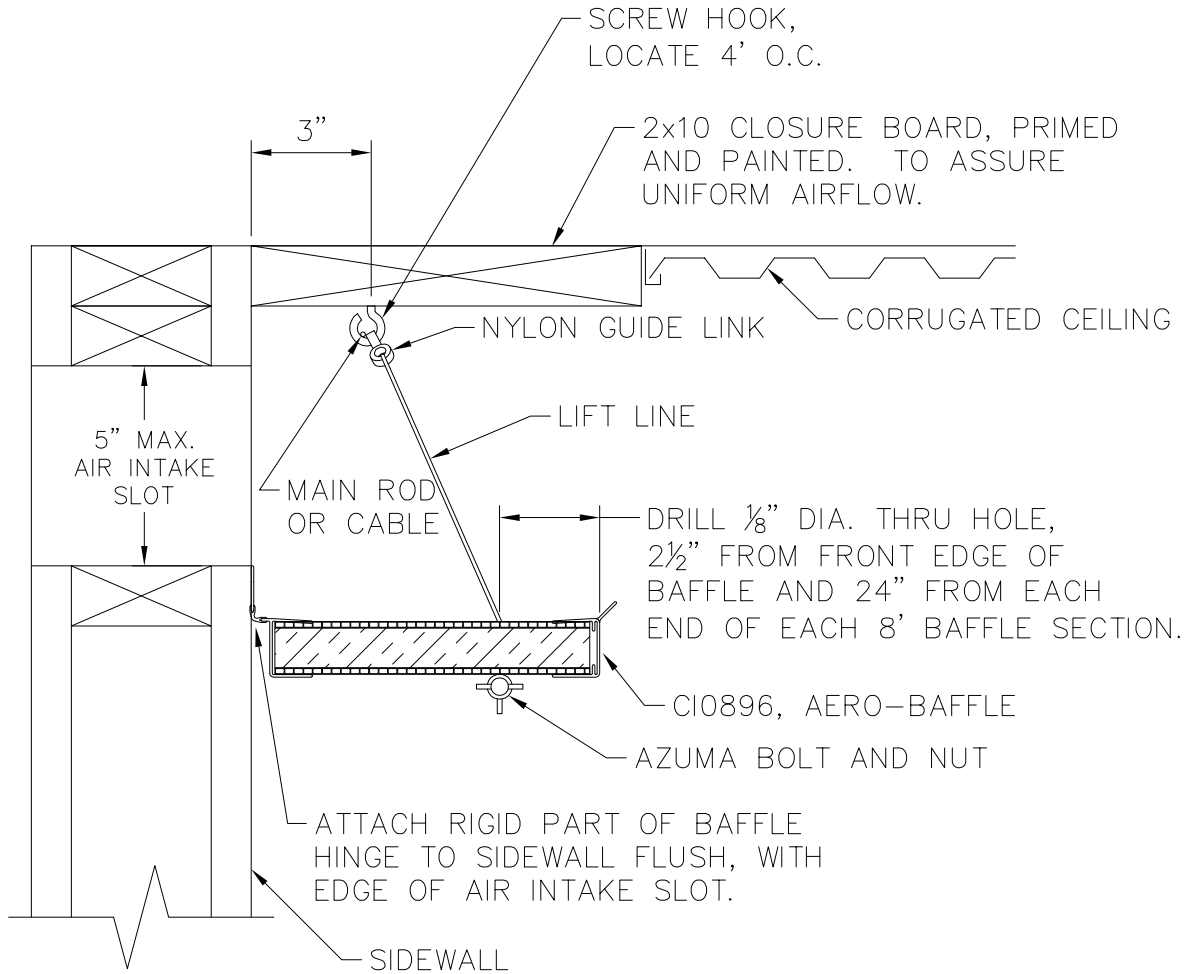
www.munters.us

Munters Corporation 2691 Ena Drive, Lansing, MI 48917-8521 USA
Toll-free: 800-227-2376 • Local: 517-676-7070 • Fax: 517-676-7078

DOWN THE WALL, CI0896
AERO-BAFFLE – CEILING SLOT

DATE	03-22-06	SCALE	NTS
DRAWN BY	DBB	JOB NO.	2237
CHECKED BY	RLD	DRAWING NO.	IB-05-025
© Copyright 2018, Munters			

DBB	01-04-18	REVISED AND UPDATED	2900
BY	DATE	DESCRIPTION	J.N.
REVISIONS			



INSTALLATION NOTES:

ALLOW FOR THERMAL EXPANSION WHEN ASSEMBLING DOORS IN A TEMPERATURE LESS THAN 40°F BY LEAVING A $\frac{1}{8}$ " TO $\frac{1}{4}$ " GAP BETWEEN THE DOORS. THIS WILL ALLOW FOR NECESSARY EXPANSION.



Munters

Your Perfect Climate

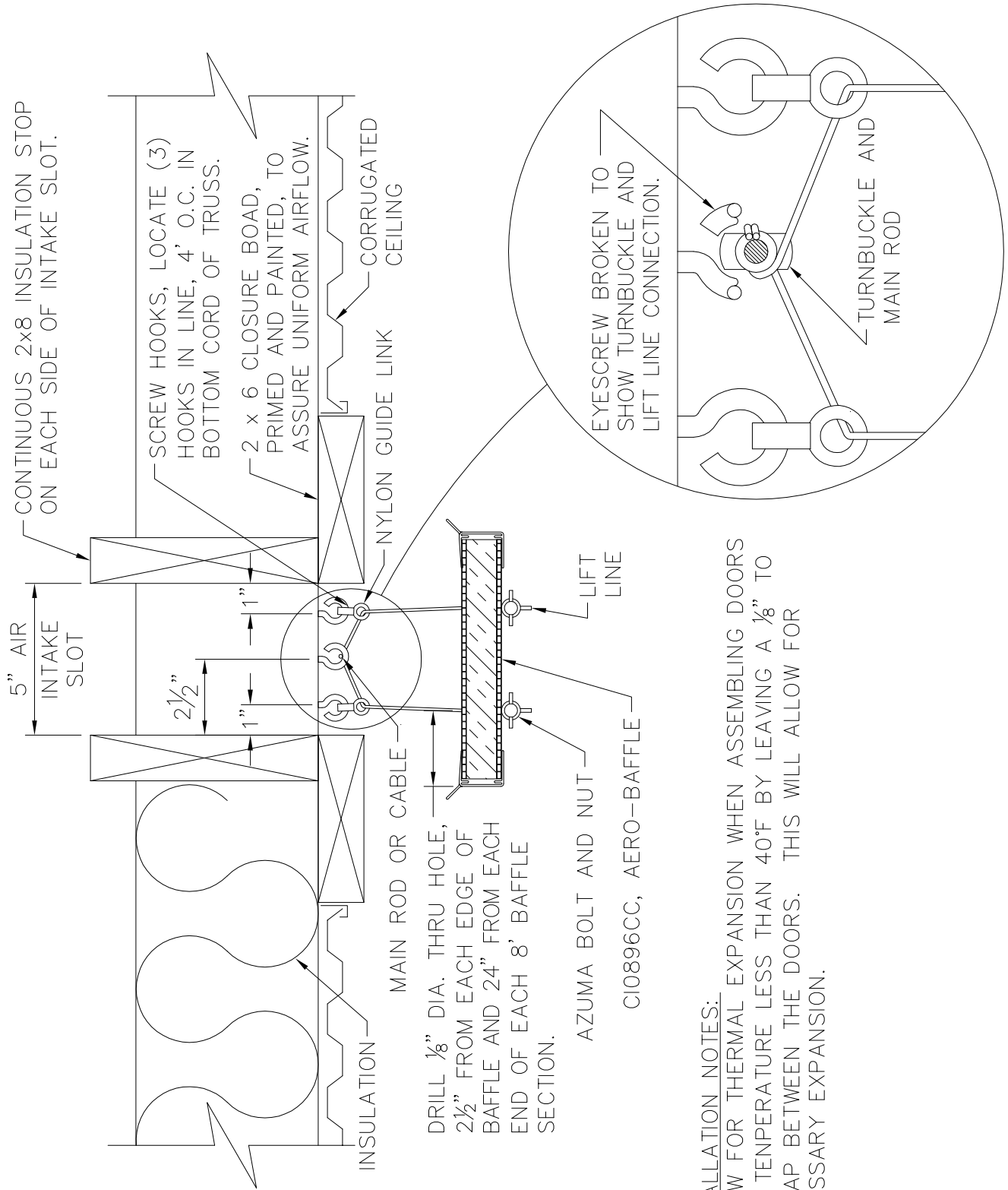
www.munters.us

Munters Corporation 2691 Ena Drive, Lansing, MI 48917-8521 USA
Toll-free: 800-227-2376 · Local: 517-676-7070 · Fax: 517-676-7078

SIDEWALL MOUNTED, CI0896
AERO-BAFFLE - WALL SLOT

DATE	03-22-06	SCALE	NTS
DRAWN BY	DBB	JOB NO.	2237
CHECKED BY	RLD	DRAWING NO.	IB-05-026
© Copyright 2018, Munters			

DBB	01-04-18	REVISED AND UPDATED	2900
BY	DATE	DESCRIPTION	J.N.
REVISIONS			



INSTALLATION NOTES:
 ALLOW FOR THERMAL EXPANSION WHEN ASSEMBLING DOORS
 IN A TEMPERATURE LESS THAN 40°F BY LEAVING A 1/8" TO
 1/4" GAP BETWEEN THE DOORS. THIS WILL ALLOW FOR
 NECESSARY EXPANSION.



Munters

Your Perfect Climate

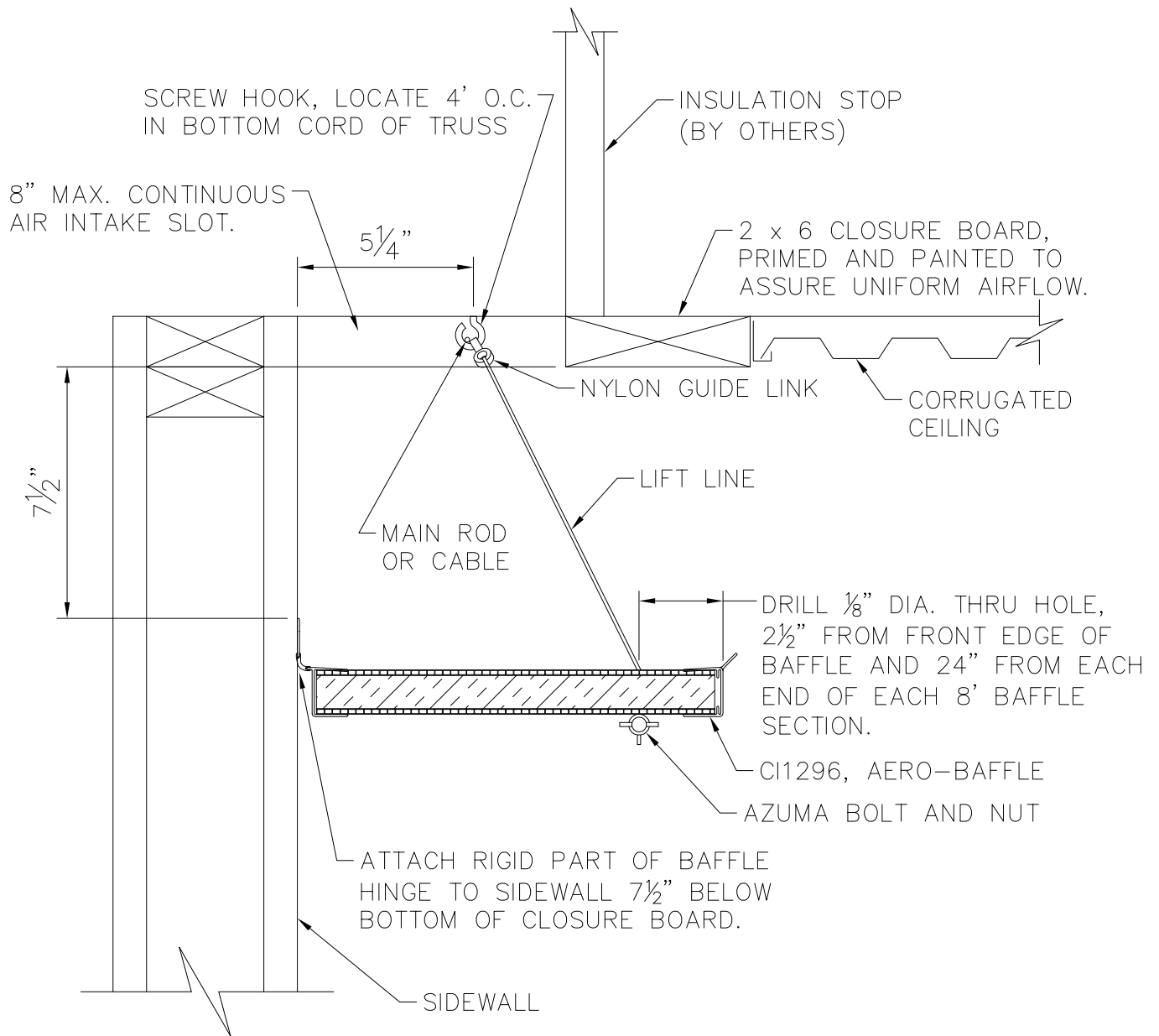
www.munters.us

Munters Corporation 2691 Ena Drive, Lansing, MI 48917-8521 USA
 Toll-free: 800-227-2376 · Local: 517-676-7070 · Fax: 517-676-7078

CONTINUOUS INLET, CI0896CC
 CENTER INLET AERO-BAFFLE

DATE	03-22-06	SCALE	NTS
DRAWN BY	DBB	JOB NO.	2237
CHECKED BY	RLD	DRAWING NO.	IB-05-035
© Copyright 2018, Munters			

DBB	01-04-18	REVISED AND UPDATED	2900
BY	DATE	DESCRIPTION	J.N.
REVISIONS			



INSTALLATION NOTES:

ALLOW FOR THERMAL EXPANSION WHEN ASSEMBLING DOORS IN A TEMPERATURE LESS THAN 40°F BY LEAVING A 1/8" TO 1/4" GAP BETWEEN THE DOORS. THIS WILL ALLOW FOR NECESSARY EXPANSION.



Munters

Your Perfect Climate

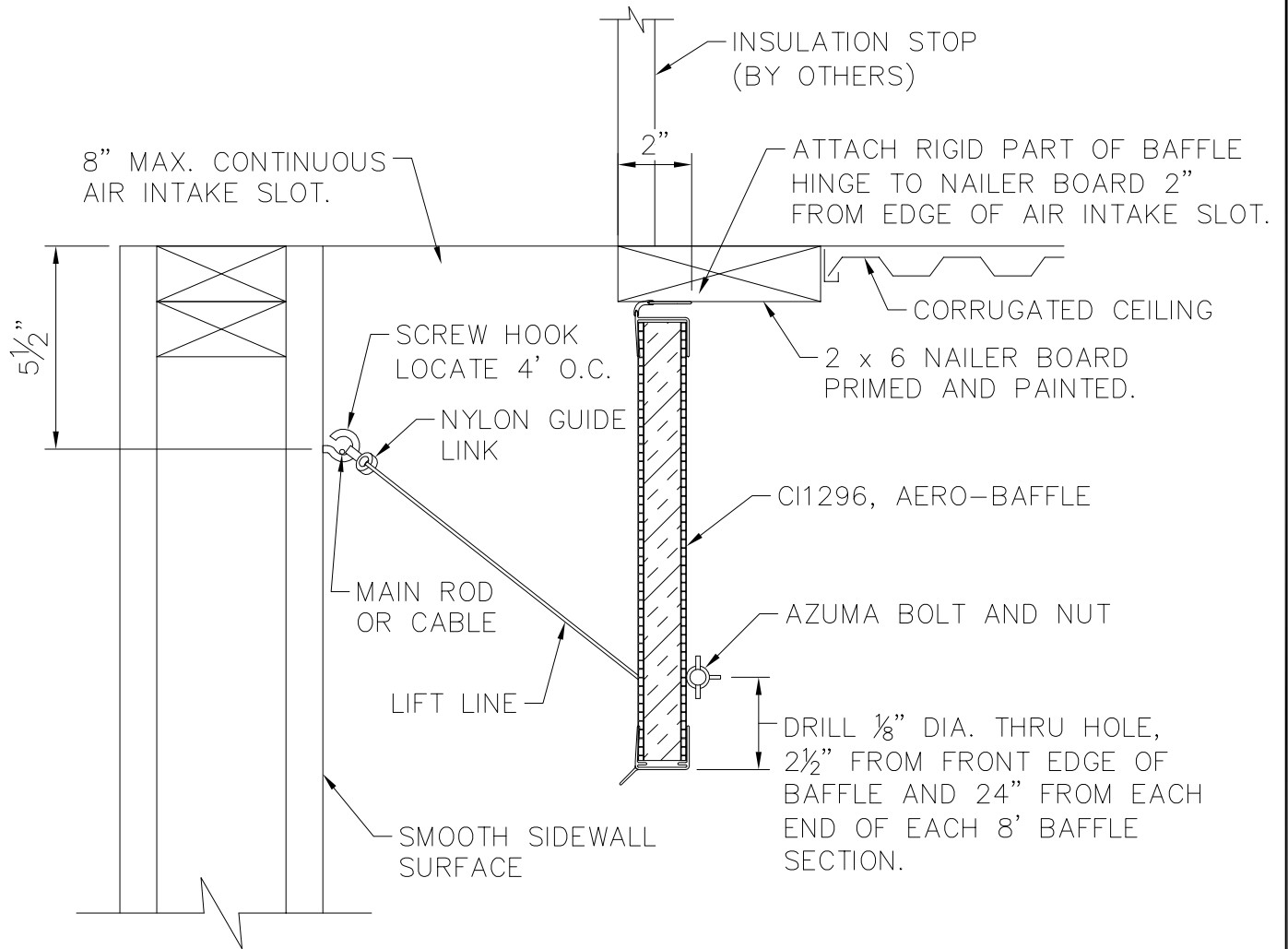
www.munters.us

Munters Corporation 2691 Ena Drive, Lansing, MI 48917-8521 USA
Toll-free: 800-227-2376 · Local: 517-676-7070 · Fax: 517-676-7078

SIDEWALL MOUNTED, CI1296
AERO-BAFFLE – CEILING SLOT

DATE	03-22-06	SCALE	NTS
DRAWN BY	DBB	JOB NO.	2237
CHECKED BY	RLD	DRAWING NO.	IB-05-027
© Copyright 2018, Munters			

DBB	01-04-18	REVISED AND UPDATED	2900
BY	DATE	DESCRIPTION	J.N.
REVISIONS			



INSTALLATION NOTES:

ALLOW FOR THERMAL EXPANSION WHEN ASSEMBLING DOORS IN A TEMPERATURE LESS THAN 40°F BY LEAVING A 1/8" TO 1/4" GAP BETWEEN THE DOORS. THIS WILL ALLOW FOR NECESSARY EXPANSION.



Munters

Your Perfect Climate

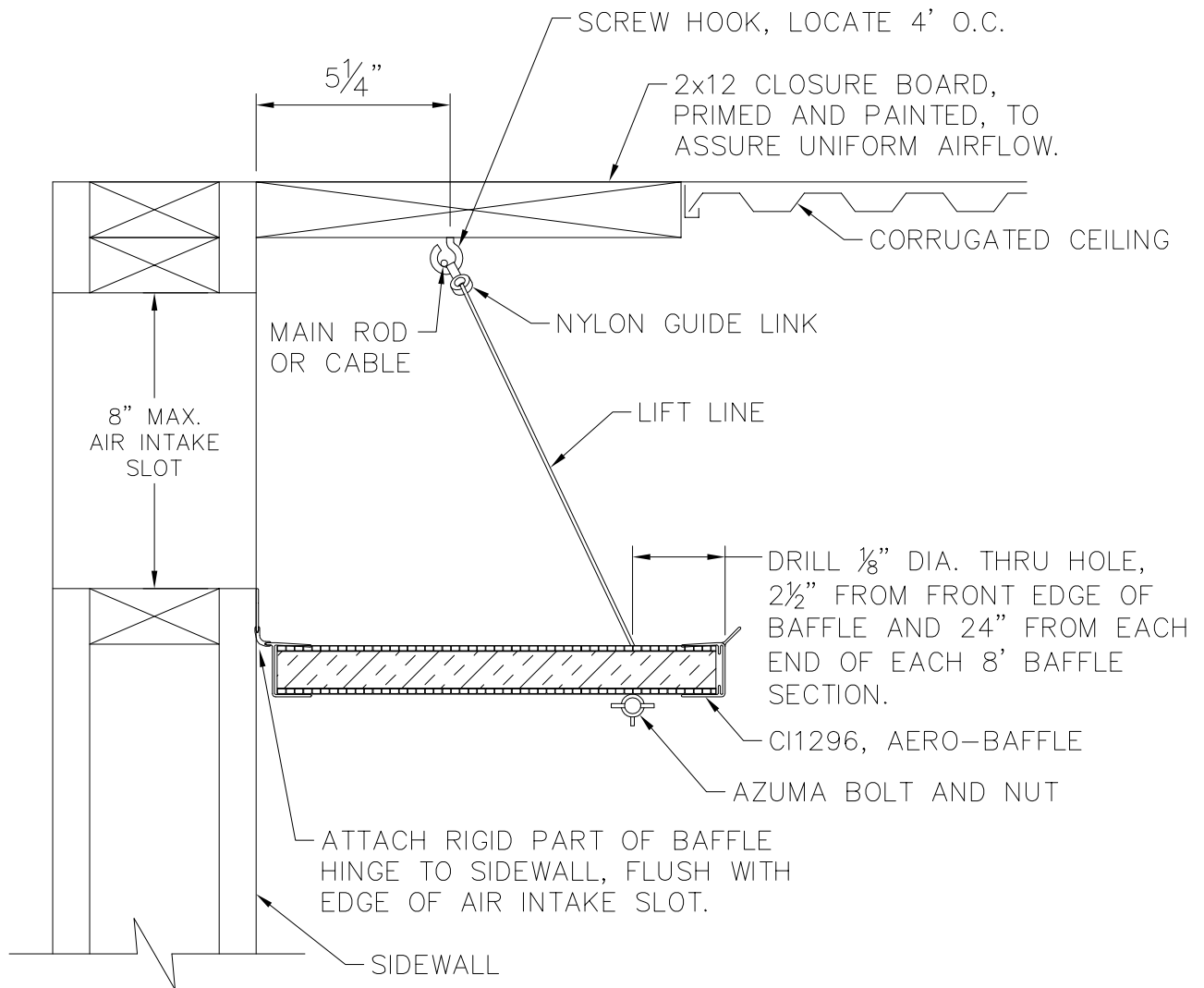
www.munters.us

Munters Corporation 2691 Ena Drive, Lansing, MI 48917-8521 USA
Toll-free: 800-227-2376 • Local: 517-676-7070 • Fax: 517-676-7078

DOWN THE WALL, CI1296
AERO-BAFFLE – CEILING SLOT

DATE	03-22-06	SCALE	NTS
DRAWN BY	DBB	JOB NO.	2237
CHECKED BY	RLD	DRAWING NO.	IB-05-028
© Copyright 2018, Munters			

DBB	01-04-18	REVISED AND UPDATED	2900
BY	DATE	DESCRIPTION	J.N.
REVISIONS			



INSTALLATION NOTES:

ALLOW FOR THERMAL EXPANSION WHEN ASSEMBLING DOORS IN A TEMPERATURE LESS THAN 40°F BY LEAVING A 1/8" TO 1/4" GAP BETWEEN THE DOORS. THIS WILL ALLOW FOR NECESSARY EXPANSION.



Munters

Your Perfect Climate

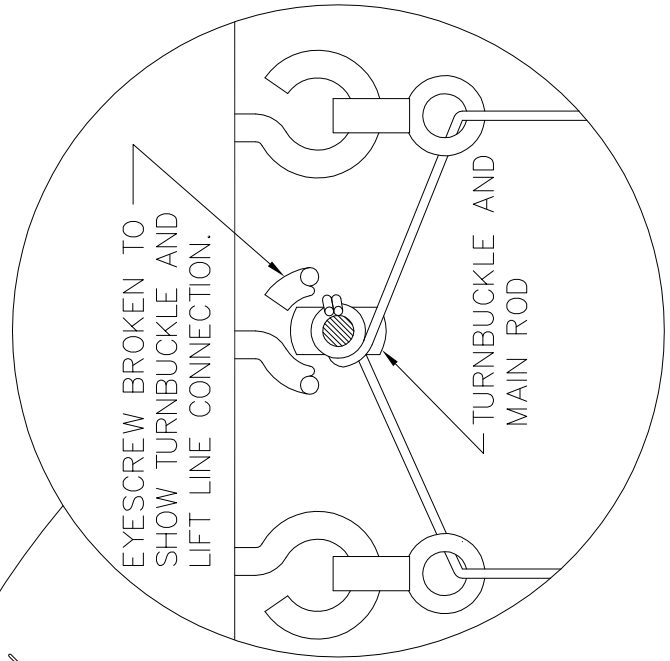
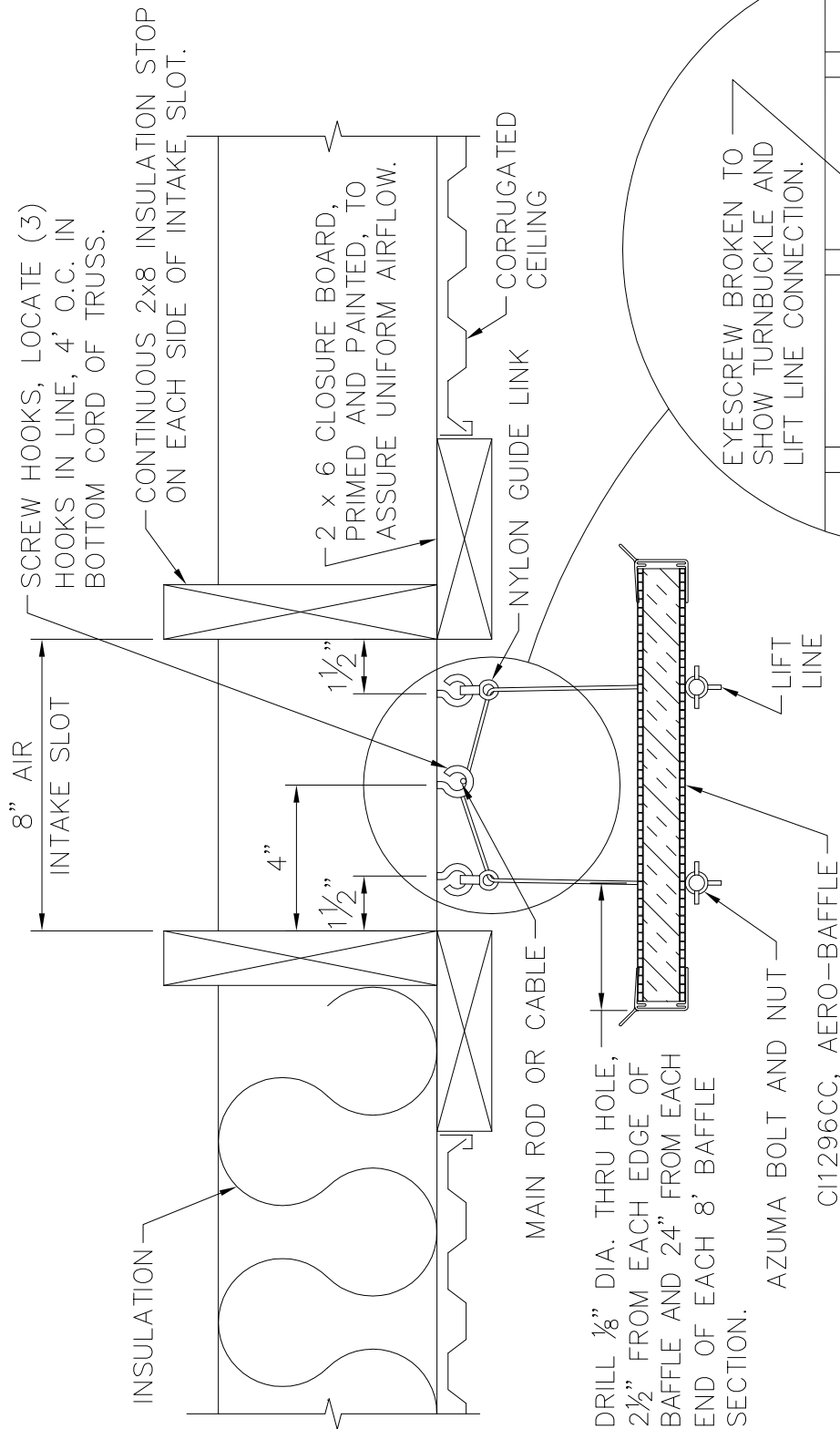
www.munters.us

Munters Corporation 2691 Ena Drive, Lansing, MI 48917-8521 USA
Toll-free: 800-227-2376 · Local: 517-676-7070 · Fax: 517-676-7078

SIDEWALL MOUNTED, CI1296
AERO-BAFFLE - WALL SLOT

DATE	03-22-06	SCALE	NTS
DRAWN BY	DBB	JOB NO.	2237
CHECKED BY	RLD	DRAWING NO.	IB-05-029
© Copyright 2018, Munters			

DBB	01-04-18	REVISED AND UPDATED	2900
BY	DATE	DESCRIPTION	J.N.
REVISIONS			



INSTALLATION NOTES:
 ALLOW FOR THERMAL EXPANSION WHEN ASSEMBLING DOORS IN A TEMPERATURE LESS THAN 40°F BY LEAVING A 1/8" TO 1/4" GAP BETWEEN THE DOORS. THIS WILL ALLOW FOR NECESSARY EXPANSION.



Munters

Your Perfect Climate

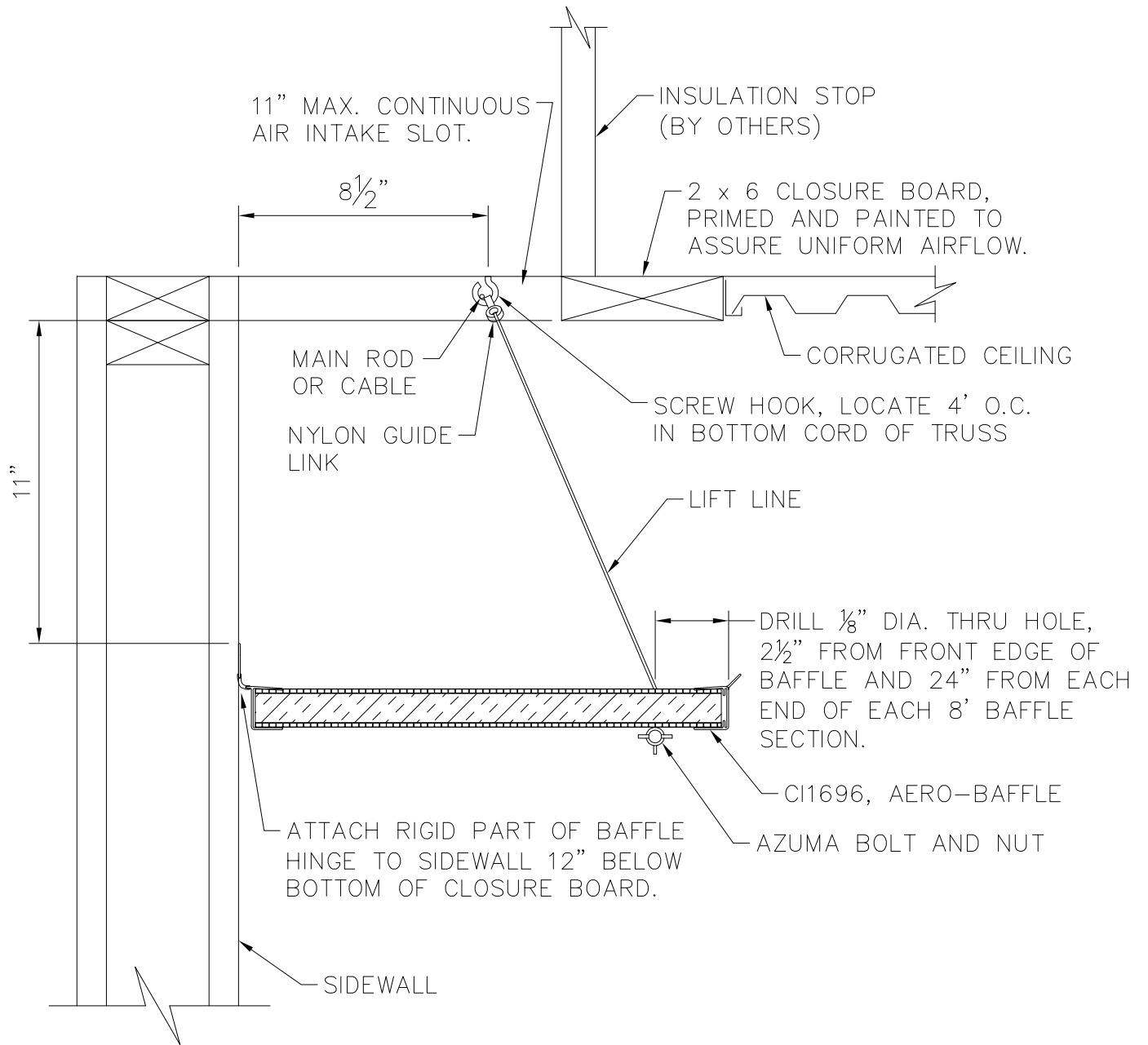
www.munters.us

Munters Corporation 2691 Ena Drive, Lansing, MI 48917-8521 USA
 Toll-free: 800-227-2376 • Local: 517-676-7070 • Fax: 517-676-7078

CONTINUOUS INLET, C11296CC
 CENTER INLET AERO-BAFFLE

DATE	03-22-06	SCALE	NTS
DRAWN BY	DBB	JOB NO.	2237
CHECKED BY	RLD	DRAWING NO.	IB-05-036
© Copyright 2018, Munters			

DBB	01-04-18	REVISED AND UPDATED	2900
BY	DATE	DESCRIPTION	J.N.
REVISIONS			



INSTALLATION NOTES:

ALLOW FOR THERMAL EXPANSION WHEN ASSEMBLING DOORS IN A TEMPERATURE LESS THAN 40°F BY LEAVING A 1/8" TO 1/4" GAP BETWEEN THE DOORS. THIS WILL ALLOW FOR NECESSARY EXPANSION.



Munters

Your Perfect Climate

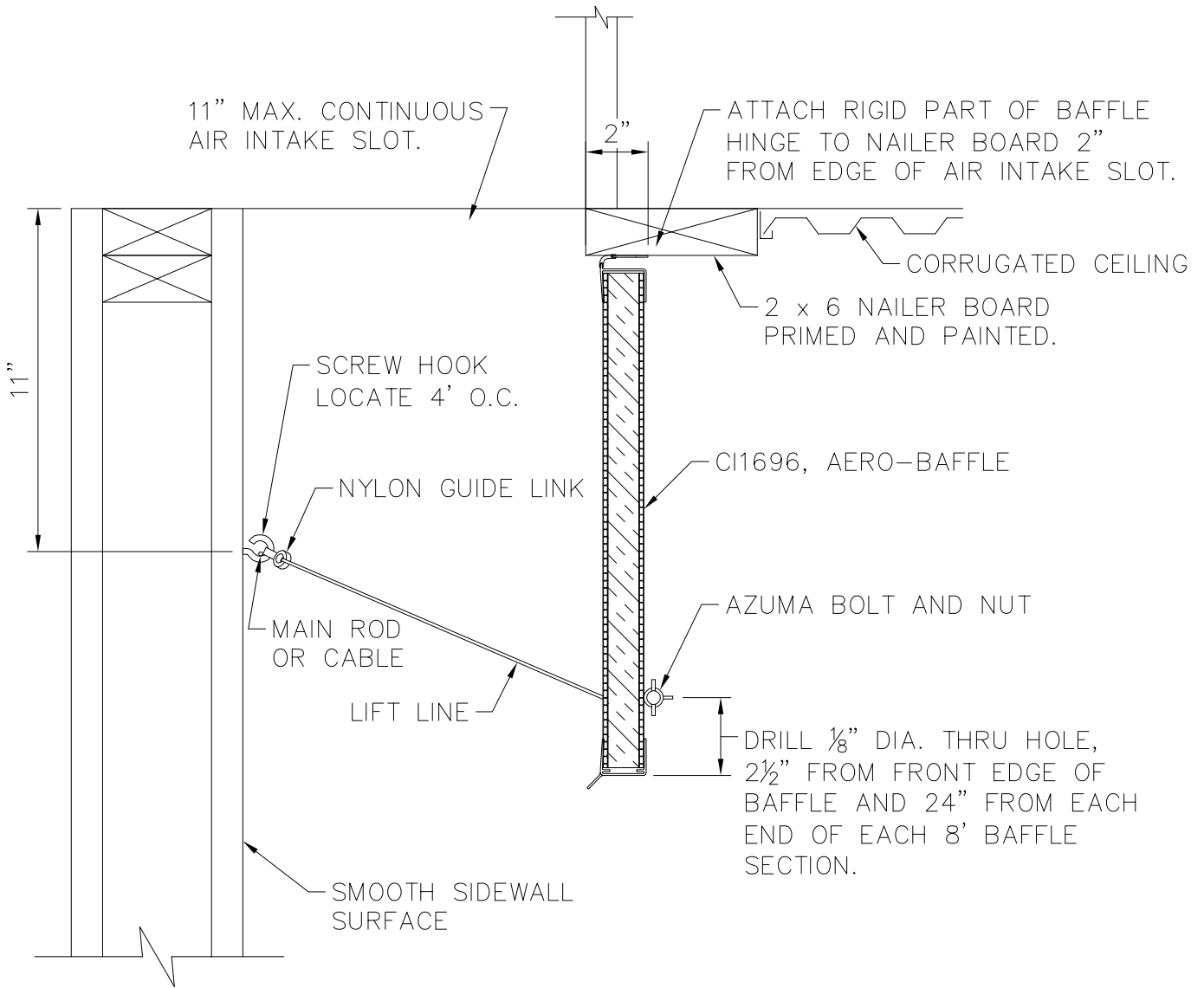
www.munters.us

Munters Corporation 2691 Ena Drive, Lansing, MI 48917-8521 USA
Toll-free: 800-227-2376 · Local: 517-676-7070 · Fax: 517-676-7078

SIDEWALL MOUNTED, CI1696
AERO-BAFFLE – CEILING SLOT

DATE	03-22-06	SCALE	NTS
DRAWN BY	DBB	JOB NO.	2237
CHECKED BY	RLD	DRAWING NO.	IB-05-030
© Copyright 2018, Munters			

DBB	01-04-18	REVISED AND UPDATED	2900
BY	DATE	DESCRIPTION	J.N.
REVISIONS			



INSTALLATION NOTES:

ALLOW FOR THERMAL EXPANSION WHEN ASSEMBLING DOORS IN A TEMPERATURE LESS THAN 40°F BY LEAVING A 1/8" TO 1/4" GAP BETWEEN THE DOORS. THIS WILL ALLOW FOR NECESSARY EXPANSION.



Munters

Your Perfect Climate

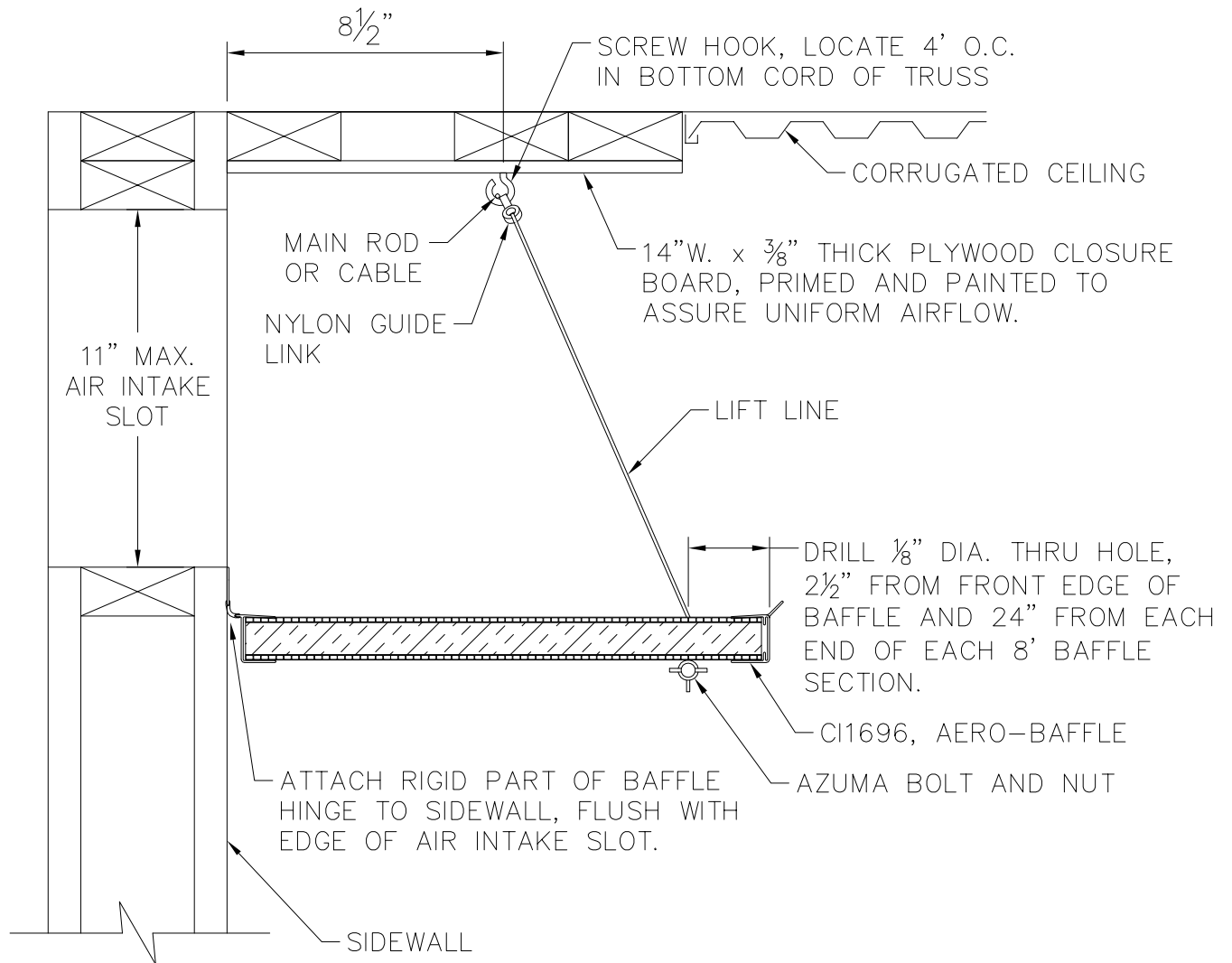
www.munters.us

Munters Corporation 2691 Ena Drive, Lansing, MI 48917-8521 USA
Toll-free: 800-227-2376 • Local: 517-676-7070 • Fax: 517-676-7078

DOWN THE WALL, CI1696
AERO-BAFFLE – CEILING SLOT

DATE	03-22-06	SCALE	NTS
DRAWN BY	DBB	JOB NO.	2237
CHECKED BY	RLD	DRAWING NO.	IB-05-031
© Copyright 2018, Munters			

DBB	01-04-18	REVISED AND UPDATED	2900
BY	DATE	DESCRIPTION	J.N.
REVISIONS			



INSTALLATION NOTES:

ALLOW FOR THERMAL EXPANSION WHEN ASSEMBLING DOORS IN A TEMPERATURE LESS THAN 40°F BY LEAVING A 1/8" TO 1/4" GAP BETWEEN THE DOORS. THIS WILL ALLOW FOR NECESSARY EXPANSION.



Munters

Your Perfect Climate

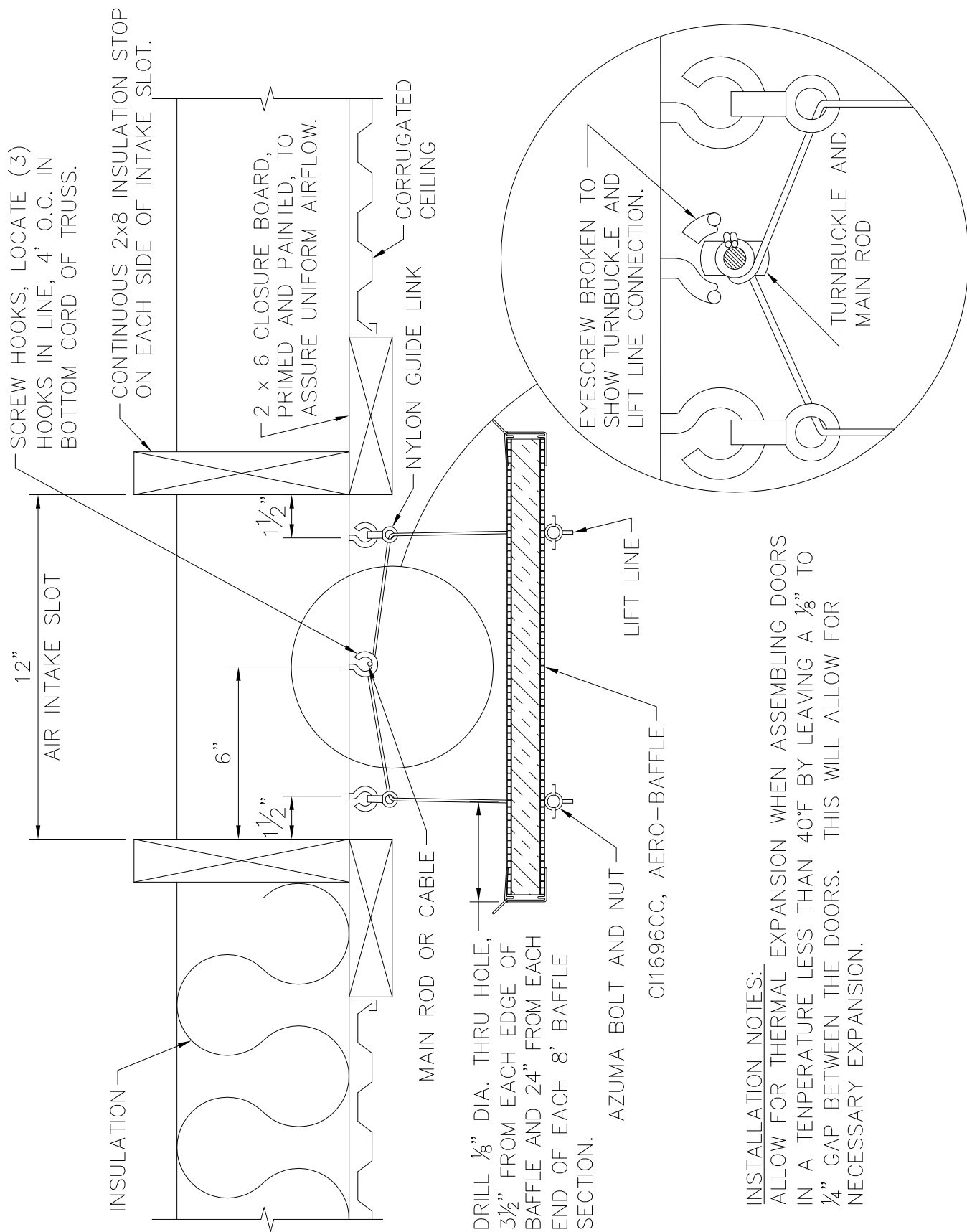
www.munters.us

Munters Corporation 2691 Ena Drive, Lansing, MI 48917-8521 USA
Toll-free: 800-227-2376 · Local: 517-676-7070 · Fax: 517-676-7078

SIDEWALL MOUNTED, CI1696
AERO-BAFFLE - WALL SLOT

DATE	03-22-06	SCALE	NTS
DRAWN BY	DBB	JOB NO.	2237
CHECKED BY	RLD	DRAWING NO.	IB-05-032
© Copyright 2018, Munters			

DBB	01-04-18	REVISED AND UPDATED	2900
BY	DATE	DESCRIPTION	J.N.
REVISIONS			



INSTALLATION NOTES:
 ALLOW FOR THERMAL EXPANSION WHEN ASSEMBLING DOORS
 IN A TEMPERATURE LESS THAN 40°F BY LEAVING A 1/8" TO
 1/4" GAP BETWEEN THE DOORS. THIS WILL ALLOW FOR
 NECESSARY EXPANSION.



www.munters.us
 Munters Corporation 2691 Ena Drive, Lansing, MI 48917-8521 USA
 Toll-free: 800-227-2376 · Local: 517-676-7070 · Fax: 517-676-7078

CONTINUOUS INLET, C11696CC
 CENTER INLET AERO-BAFFLE

DATE	03-22-06	SCALE	NTS
DRAWN BY	DBB	JOB NO.	2237
CHECKED BY	RLD	DRAWING NO.	IB-05-037
© Copyright 2018, Munters			

BY	DATE	DESCRIPTION	J.N.
DBB	01-04-18	REVISED AND UPDATED	2900
REVISIONS			