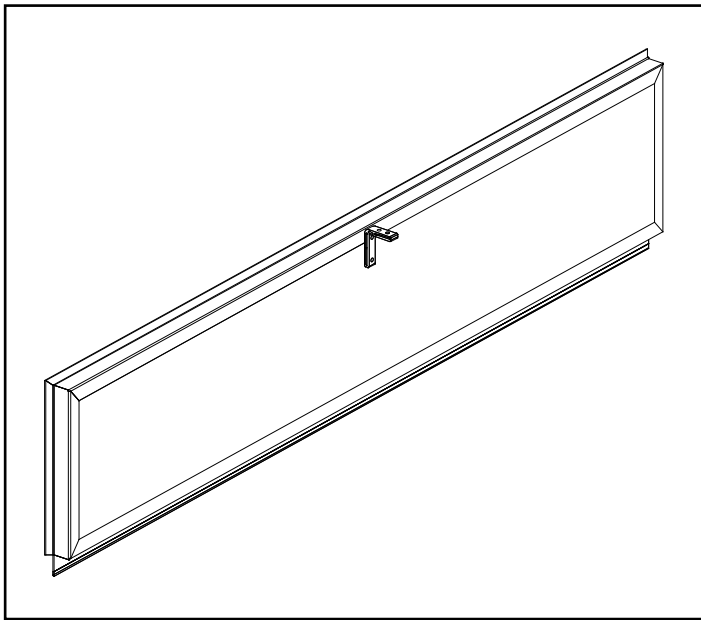


Instruction Manual



Plastic Inlet

Plastic Inlet

Models: PI0848 • PI1248 • PI1548



Plastic Inlet

Instructions for Use and Maintenance

Thank You:

Thank you for purchasing a Munters Plastic Inlet. Munters equipment is designed to be the highest performing, highest quality equipment you can buy. With the proper installation and maintenance it will provide many years of service.

Please Note:

To achieve maximum performance and insure long life from your Munters product it is essential that it be installed and maintained properly. Please read all instructions carefully before beginning installation.

Warranty:

For Warranty claims information see the "Warranty Claims and Return Policy" form QM1021 available from the [Munters Corporation office at 1-800-227-2376 or by e-mail at aghort.info@munters.com](mailto:aghort.info@munters.com).

Conditions and Limitations:

- Products and Systems involved in a warranty claim under the "Warranty Claims and Return Policy" shall have been properly installed, maintained and operated under competent supervision, according to the instructions provided by Munters Corporation.
- Malfunction or failure resulting from misuse, abuse, negligence, alteration, accident or lack of proper installation or maintenance shall not be considered a defect under the Warranty.

Index

Chapters	Page
1. Unpacking the Equipment	4
1.1 Parts List	
1.2 Inlet Dimensions	
2. Installation Instructions	5
3. Cabling	9

Unpacking the Equipment

1.

1.1 Parts List

Before beginning installation, check the overall condition of the equipment. Remove packing materials, and examine all components for signs of shipping damage. Any shipping damage is the customer's responsibility and should be reported immediately to your freight carrier.

Each Pxxxx Inlet includes:

1 - Hardware Package (HP1222)

HP1222 for PB Inlets

ID	Qty.	Cat. No.	Description
[A]	1	FA1199-2	Lift Bracket
[B]	2	KS1066	1/4"x2 1/4" Hex Bolt, SS
[C]	2	KN0702	1/4" Flange Nut, SS
[D]	2	KW3002	1/4" Flat Washer, SS

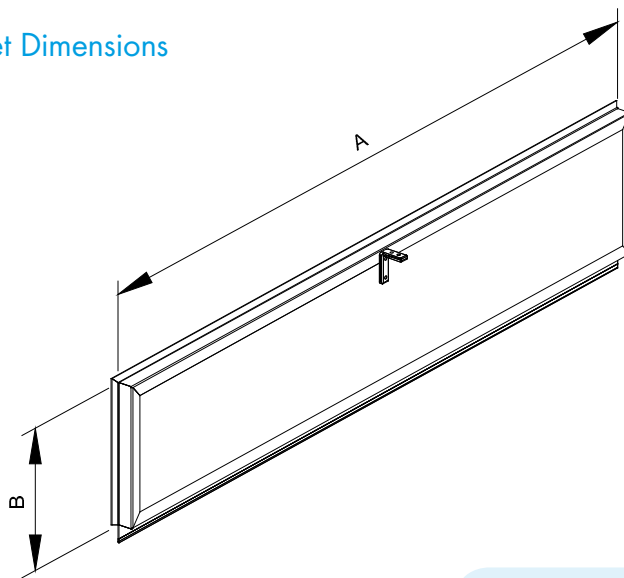
Optional Latch Kits (AC1558)

[E]	1	KS2465	1/4" x 3.5" Lag Screw, SS
[F]	1	KS2125	#10 x 3.5" Deck Screw, Ceramic CTD
[G]	1	FH2732	Latch Arm
[H]	1	KX1256	3/4" O.D. x 1" L. Spacer
[J]	2	KX1257	3/4" O.D. x 3/4" L. Spacers

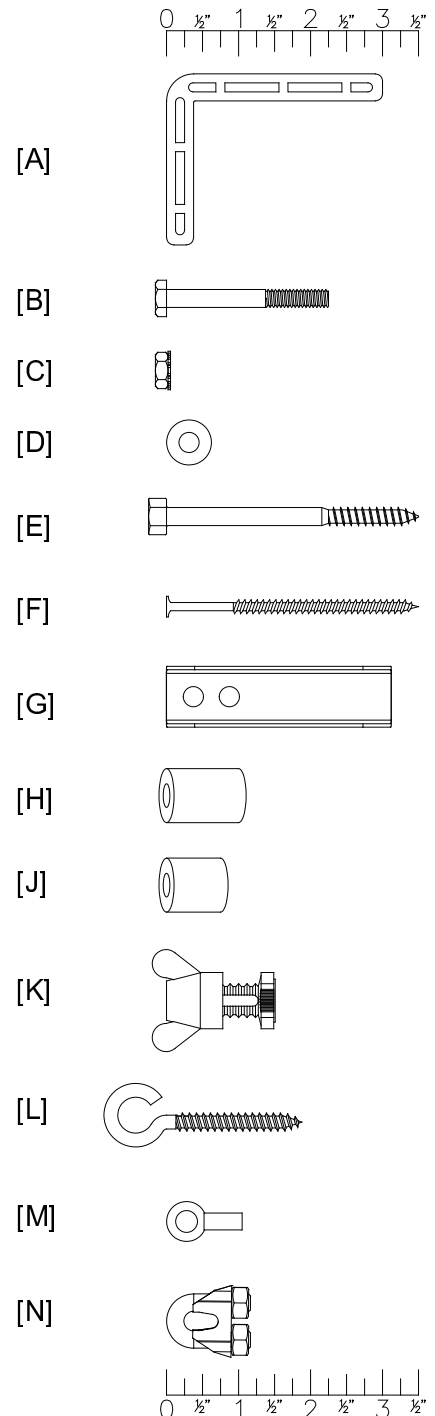
Optional Lift Kits (FA1500)

[K]	1	AC0211/AC0212	Azuma Bolt and Nut
[L]	1	KS2601	6 GA. x 1.875" Open Eye Lag Screw, ZP
[M]	1	AC1054	Nylon Guide Link
[N]	1	AC1039	3/16" Dia. Cable Clamp, ZP

1.2 Inlet Dimensions



Cat. No.	WALL OPENING		(I.D., framed)
	A	B	
PI0848	48"	8"	7 1/2" H. x 47" W.
PI1248	48"	12"	11 1/2" H. x 47" W.
PI1548	48"	15"	14 1/2" H. x 47" W.



Installation Instructions

2.

2.1 INSTALL

Step 1

Construct framed opening to correct size according to the Wall Opening listed in chart on previous page. A minimum of 10" - 12" from ceiling to the top inside of the stud. See Figure 1A and 1B.

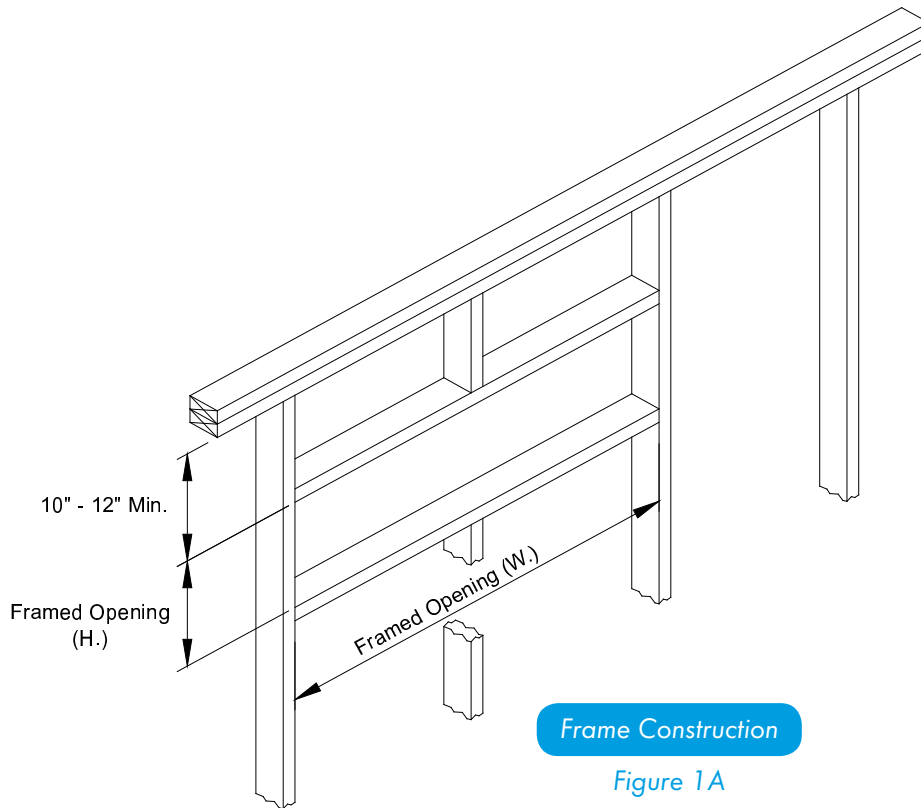


Figure 1A

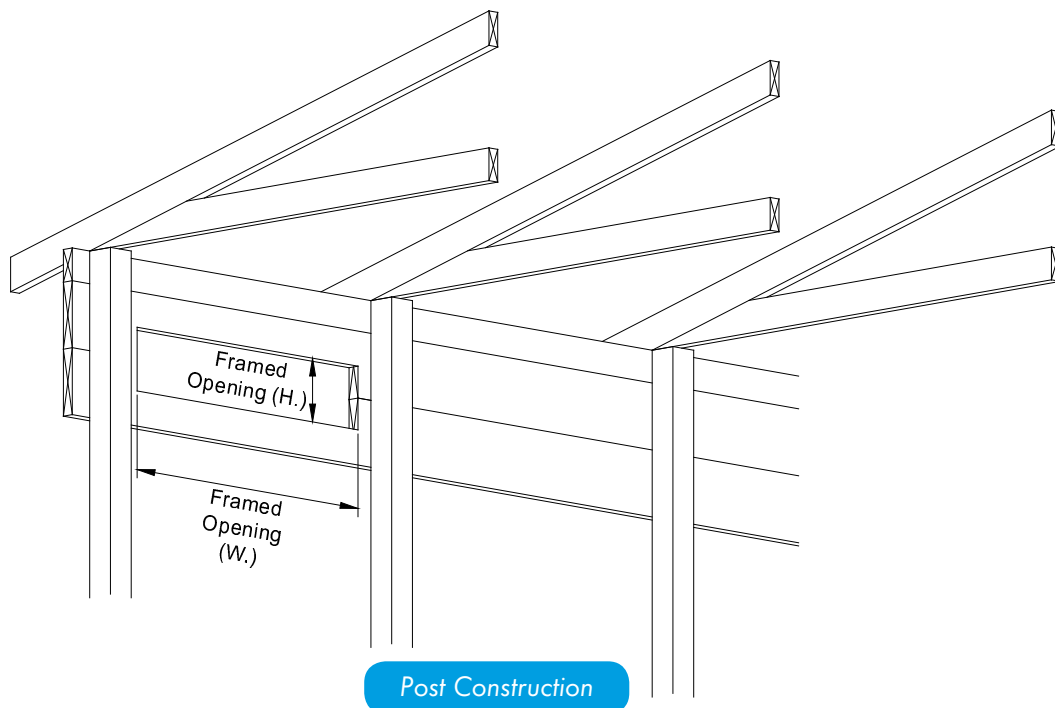


Figure 1B

Step 2

Using Lift Bracket [A] as a guide mark and drill (2) $\frac{3}{32}$ " holes in Vent Door and install Lift Bracket [A] flush with the top edge of baffle door and centered on the length, using (2) Bolts [B], Nuts [C] and Washers [D] (provided). Top bolt should go through top extrusion. See Figure 2.

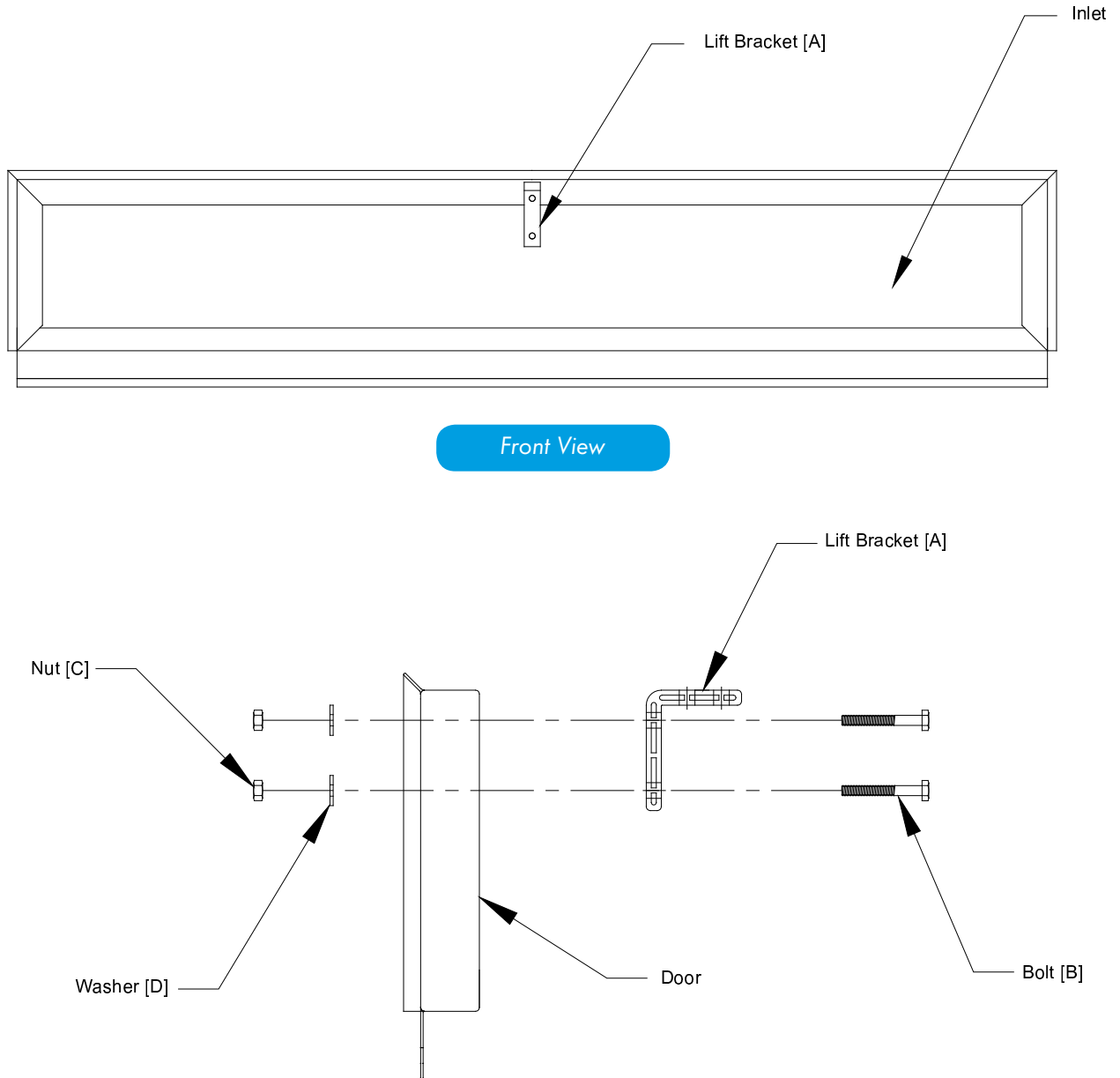


Figure 2

Step 3

Install Screw Hooks [L] centered on length of PB inlet and $2\frac{1}{2}$ " above top framed opening. See [Figure 3A and 3B](#). For post frame construction, also, install a screw hook on each post near the ceiling. See [Figure 3C](#).

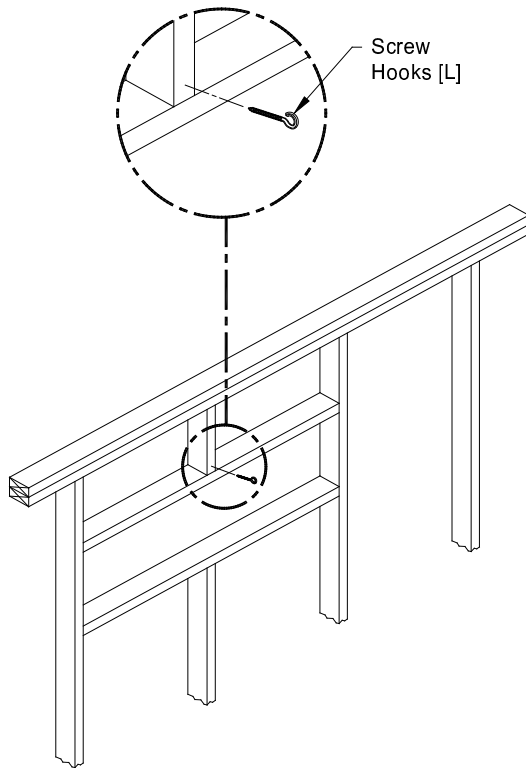


Figure 3A

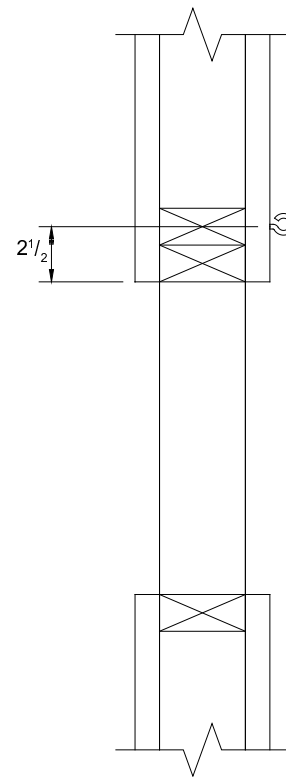


Figure 3B

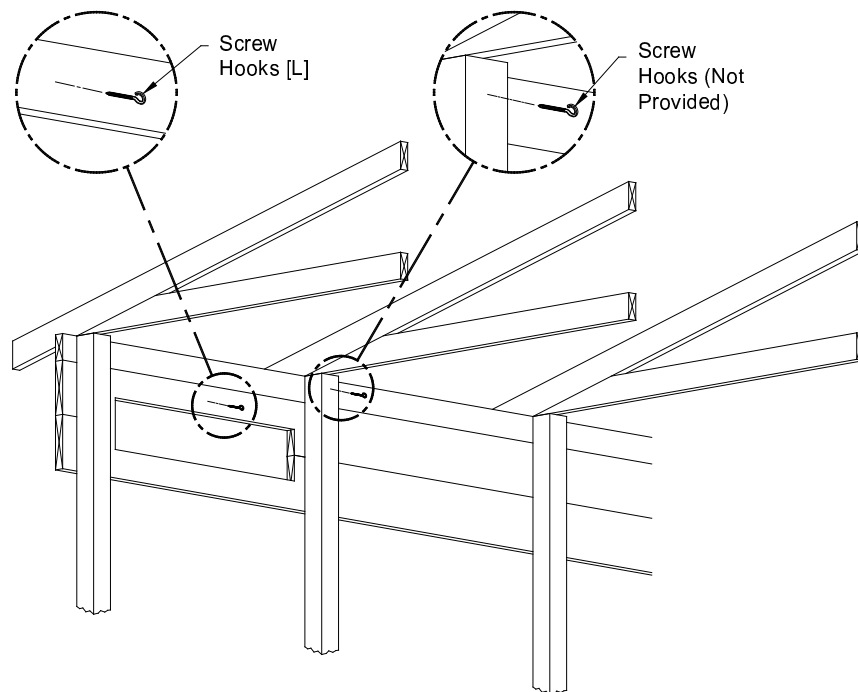


Figure 3C

Step 4

Install inlet onto opening by folding hinge upward and aligning rigid part of hinge with bottom of opening as shown in *Figure 4A*. Lag screws (not provided) should be installed at 3.5" O.C. See *Figure 4B and 4C*.

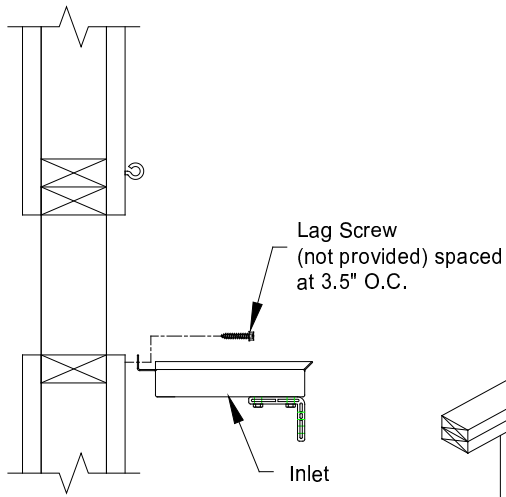


Figure 4A

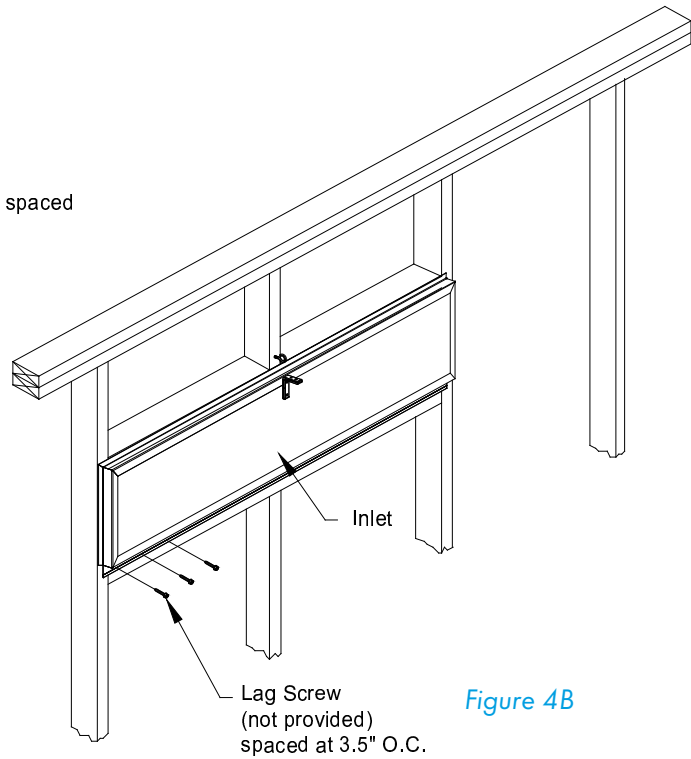


Figure 4B

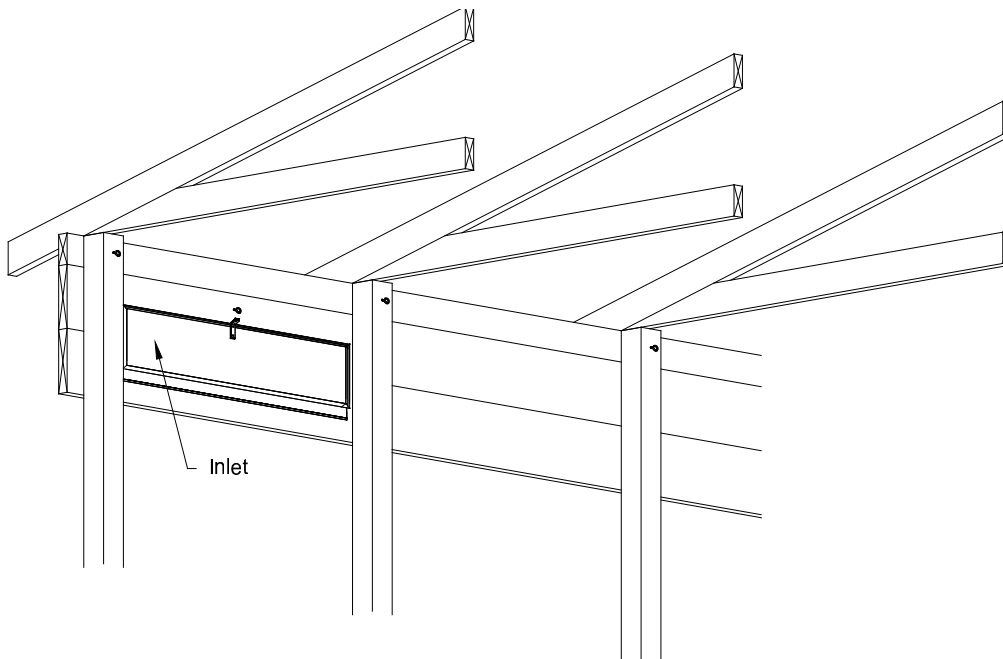


Figure 4C

Step 5

Attach pulleys in line with screw hooks at each endwall. See Figure 5A and 5B.

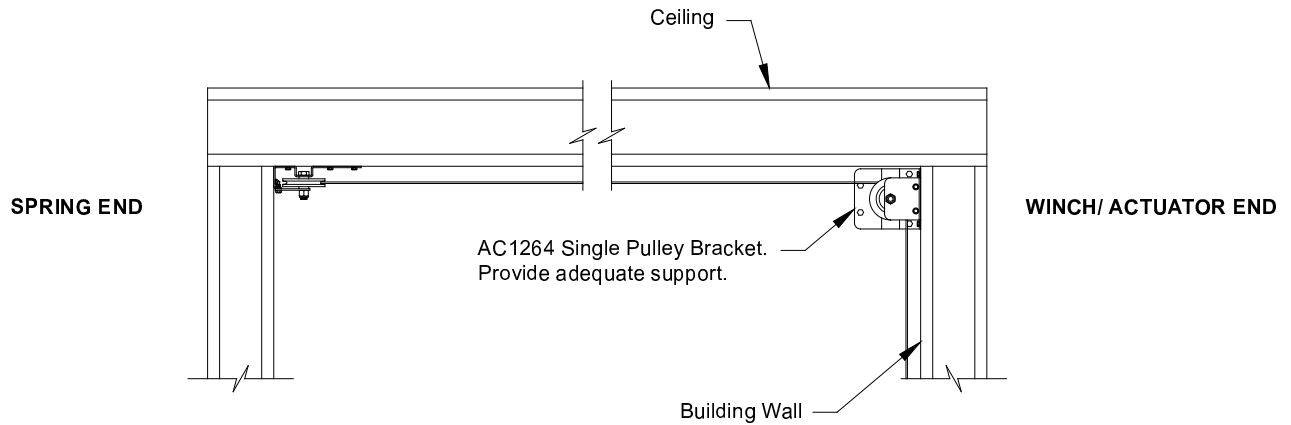


Figure 5A

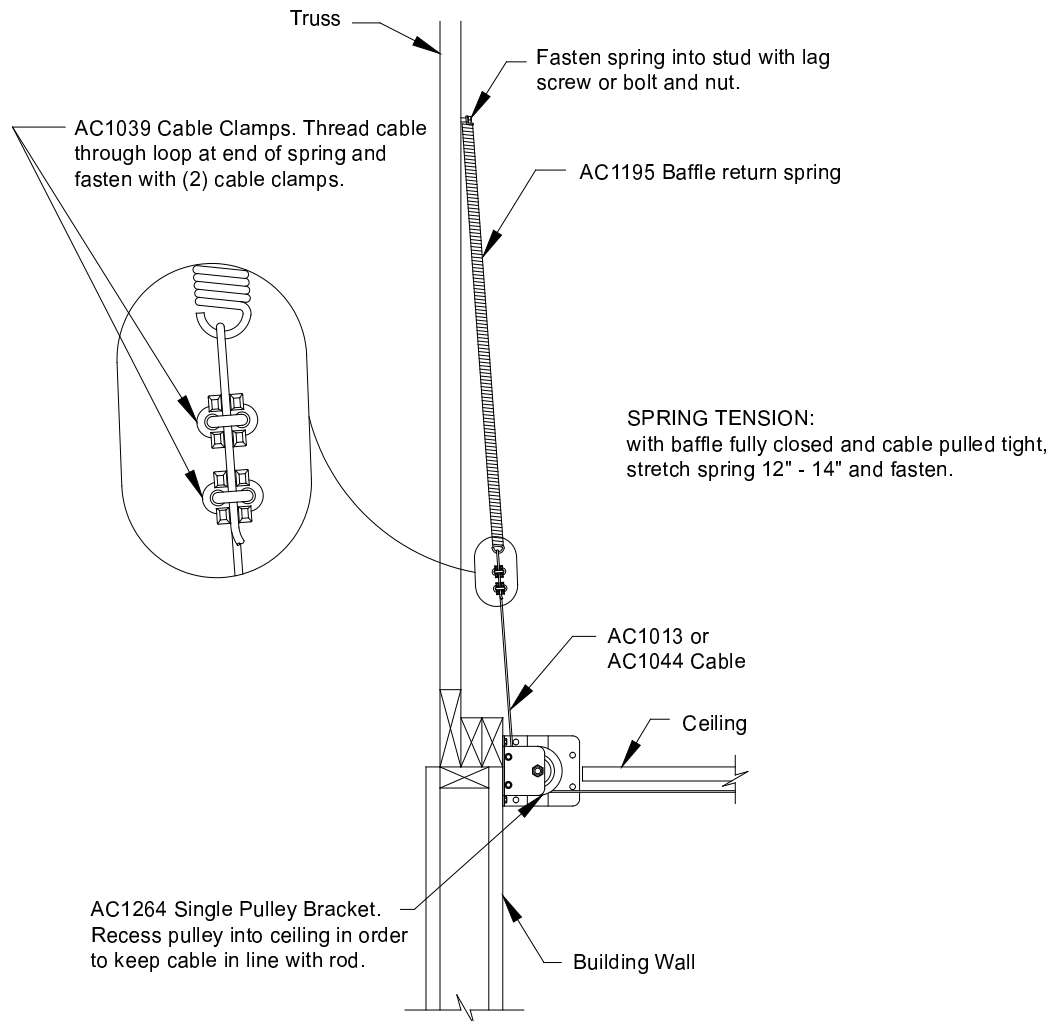


Figure 5B

Step 6

Pull main cable from winch or actuator through pulleys and screw hooks to weights or return spring on opposite end wall. See Figures 5A, 5B, 6A and 6B. Be sure to coil approximately 1' of cable on winch.

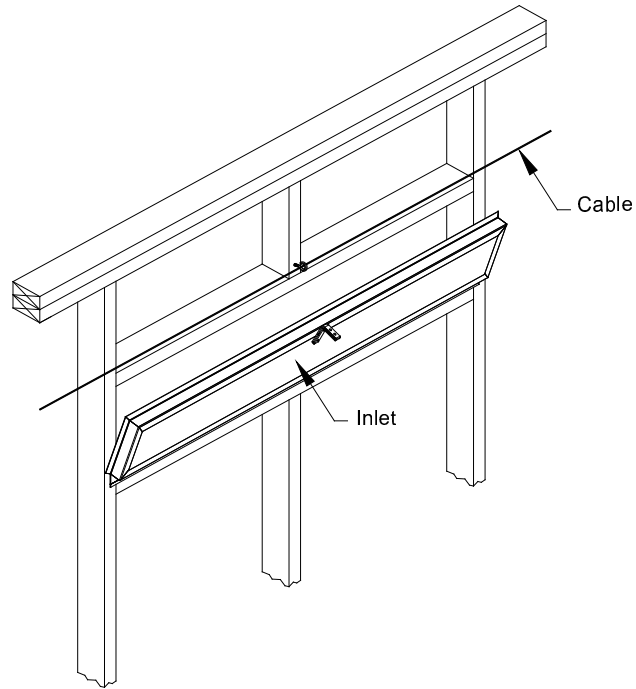


Figure 6A

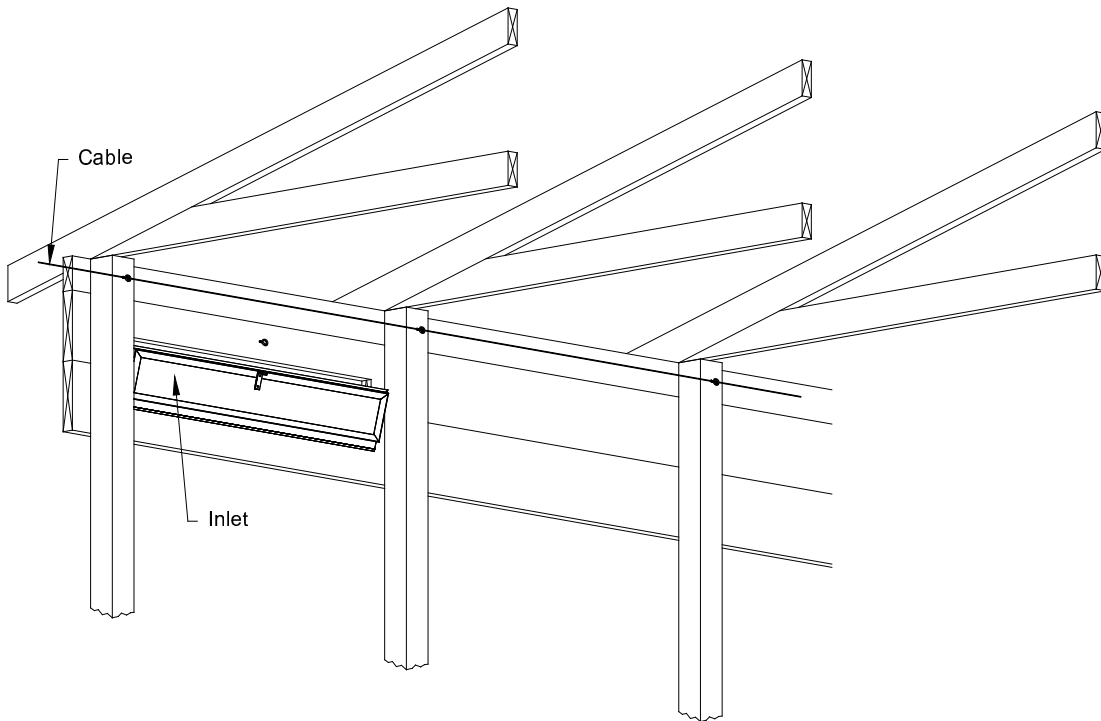


Figure 6B

Note: If optional kit, Lift Package (FA1500) was purchased, hardware mentioned below in [Step 7](#) is included. If not purchased, hardware provided by others.

Step 7

Put a Nylon Guide Link [M] (black) on each Screw Hook [L] that is directly above the Lift Bracket [A] of each inlet. Attach one Lift Line to Main Cable using (1) Cable Clamp [N]. Lift line should be attached 14" back from hook toward the winch end. Run each lift line through the adjacent Nylon Guide Link [M] and attach Azuma Bolt and Nut [K]. See [Figure 7A](#), [7B](#) and [7C](#).

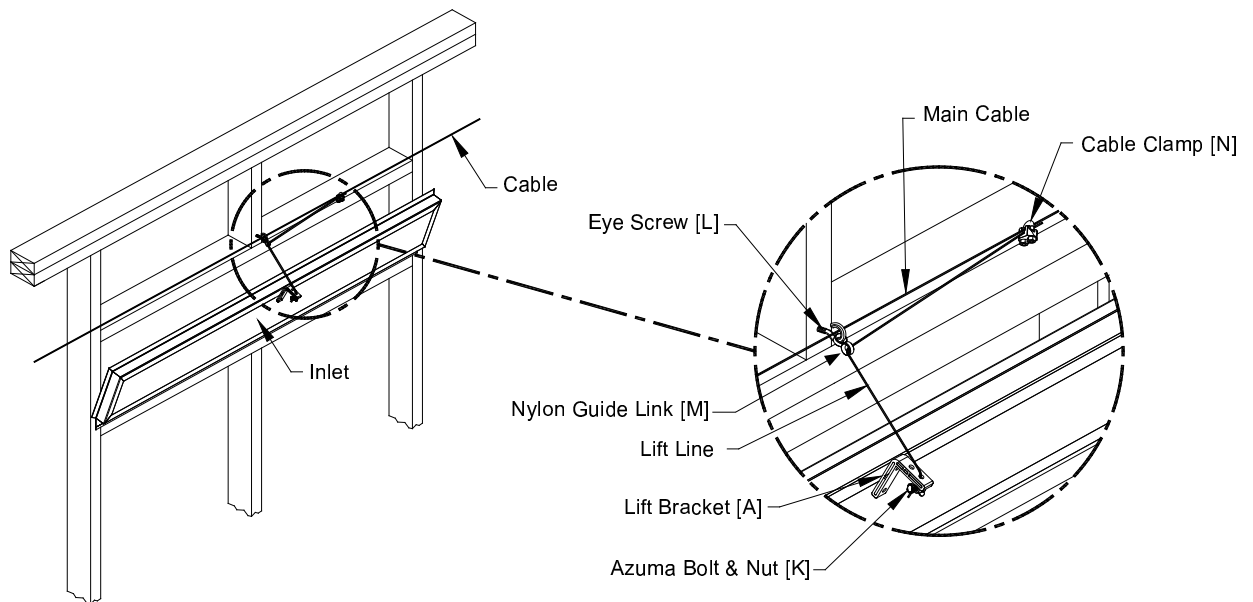


Figure 7A

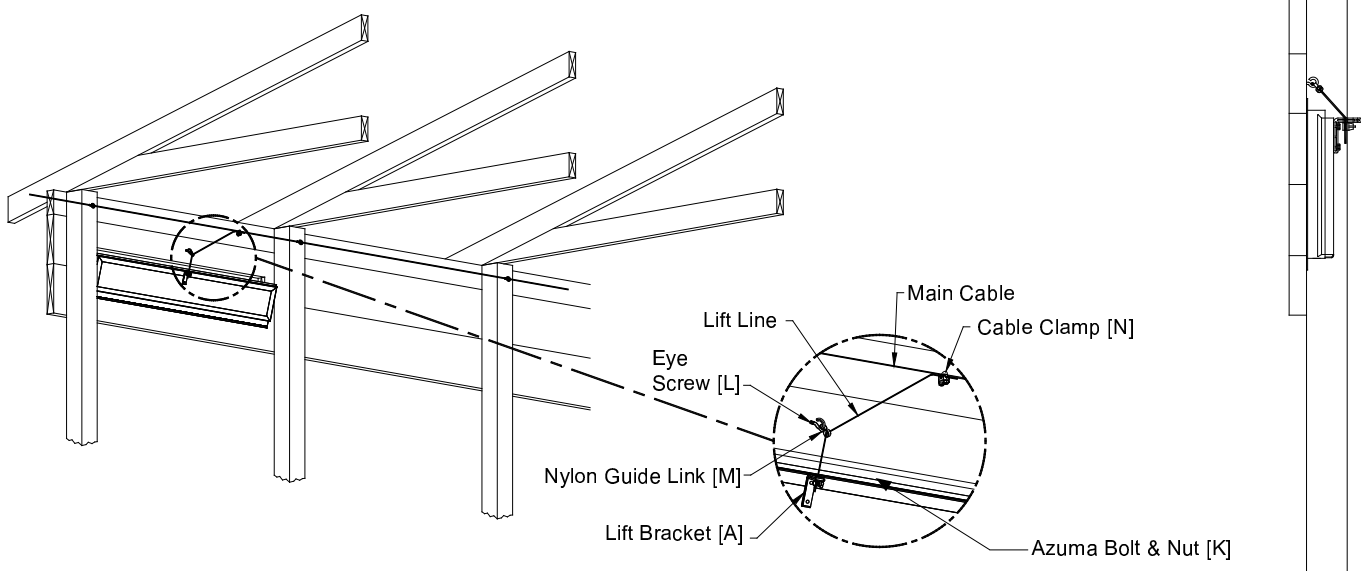


Figure 7B

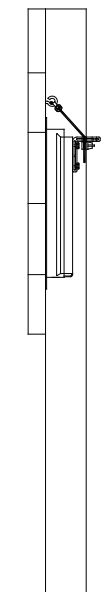


Figure 7C

Step 8

With the winch at its fully closed position, go back, check and readjust each baffle door tightly to inlet frame. Use winch or baffle machine to open and close inlets a few times to make sure baffle moves smoothly and each door remains even over the total length of house. See Figure 8.

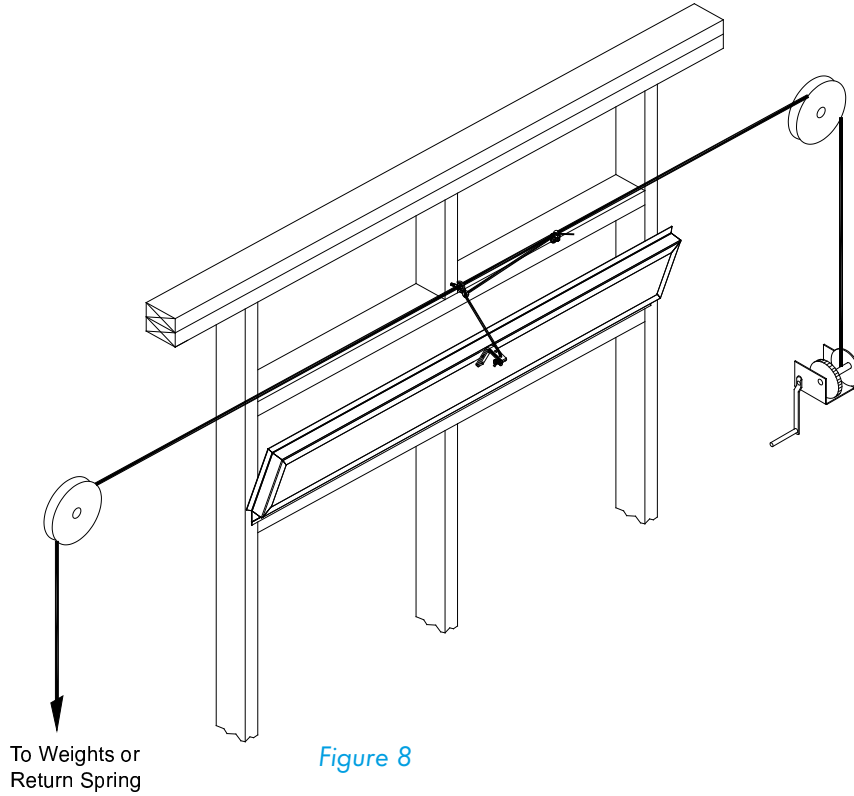


Figure 8

Step 9

Install optional Latch Bracket. The latch bracket should be located near the top center of the inlet. The spacer should not interfere with the inlet seal. See Figure 9A and 9B.

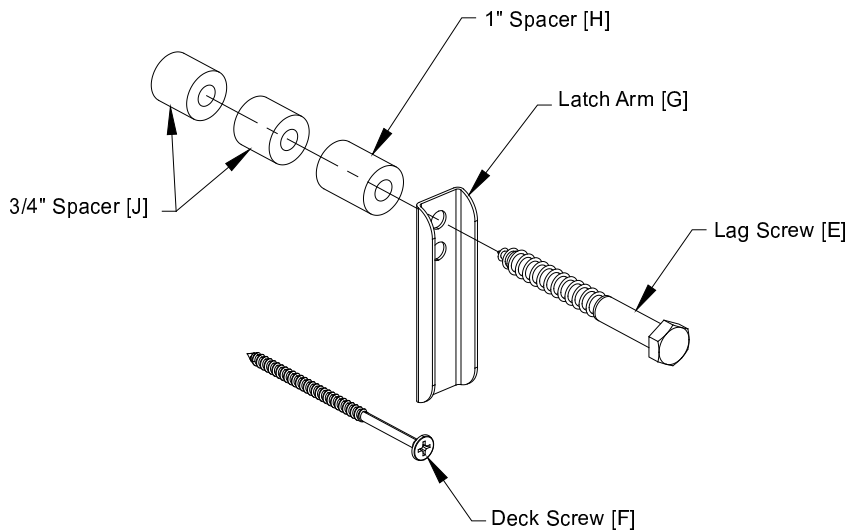


Figure 9A

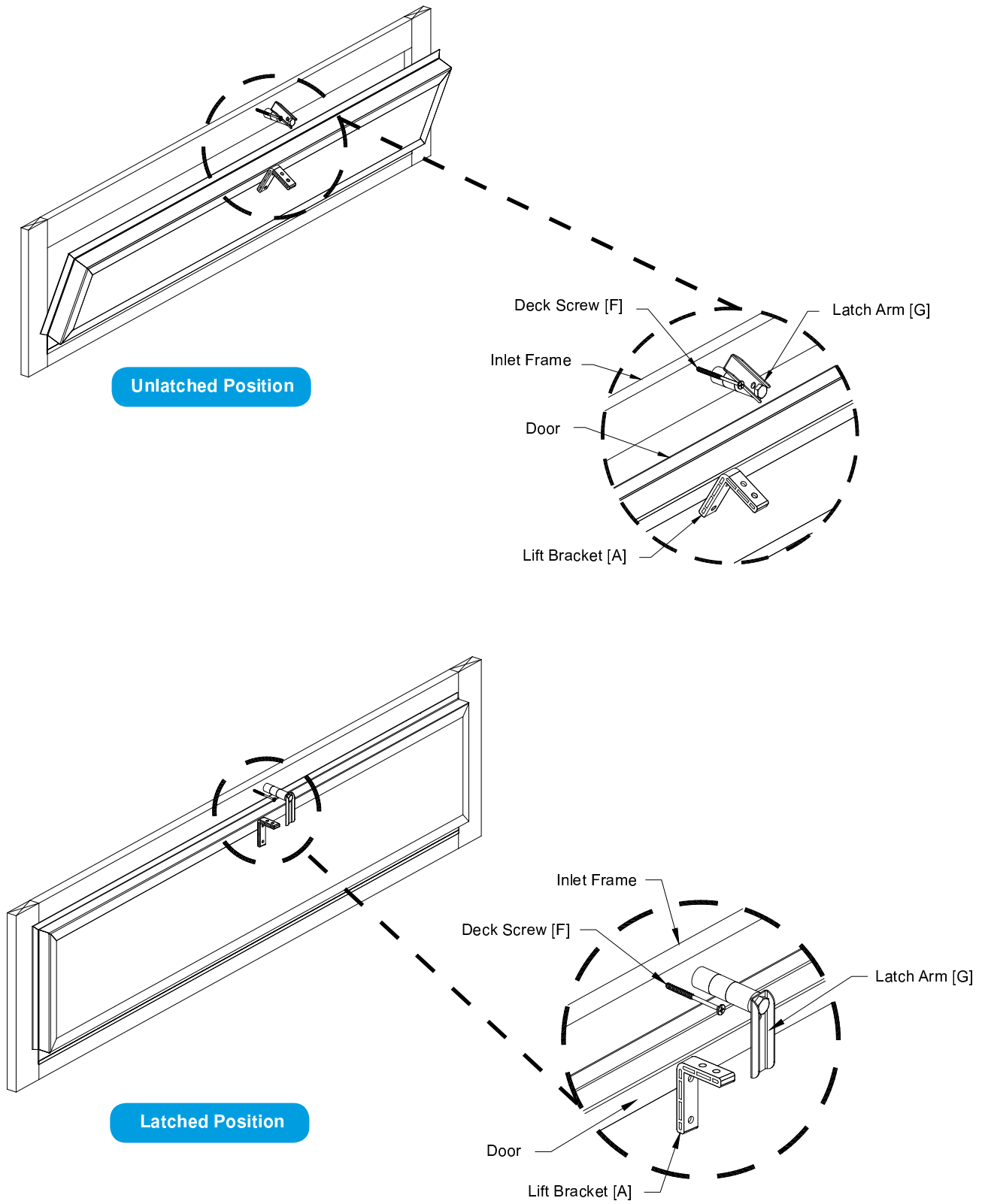


Figure 9B

Plastic Inlets are developed and produced by Munters Corporation, Lansing, Michigan U.S.A. 1-800-227-2376



Munters Europe AB, Isafjordsgatan 1, P.O. Box 1150, SE-164 26 Kista, Sweden. Phone +46 08 626 63 00, Fax +46 8 754 56 66.

Munters Corporation 2691 Ena Drive Lansing, MI 48917 U.S.A. Phone +1 800-227-2376, Fax +1 517-676-7078

www.munters.us

Australia Munters Pty Limited, Phone +61 2 6025 6422, **Brazil** Munters Brasil Industria e Comercio Ltda, Phone +55 41 3317 5050, **Canada/US** Munters Corporation Lansing, MI Phone +1 517 676 7070, **China** Munters Air Treatment Equipment (Beijing) Co. Ltd, Phone +86 10 80 481 121, **Denmark** Munters A/S, Phone +45 9862 3311, **India** Munters India, Phone +91 20 3052 2520, **Indonesia** Munters, Phone +62 818 739 235, **Italy** Munters Italy S.p.A., Chiusavecchia, Phone +39 0183 52 11, **Japan** Munters K.K., Phone +81 3 5970 0021, **Korea** Munters Korea Co. Ltd., Phone +82 2 761 8701, **Mexico** Munters Mexico, Phone +52 818 262 54 00, **Russia** Munters AB, Phone +7 812 448 5740, **Singapore** Munters Pte Ltd., Phone +65 744 6828, **South Africa and Sub-Sahara Countries** Munters (Pty) Ltd., Phone +27 11 997 2000, **Spain** Munters Spain S.A., Phone +34 91 640 09 02, **Sweden** Munters AB, Phone +46 8 626 63 00, **Thailand** Munters Co. Ltd., Phone +66 2 642 2670, **Turkey** Munters Form Endüstri Sistemleri A.Ş, Phone +90 322 231 1338, **USA** Munters Corporation Lansing, MI Phone +1 517 676 7070, **Vietnam** Munters Vietnam, Phone +84 8 3825 6838, **Export & Other countries** Munters Italy S.p.A., Chiusavecchia Phone +39 0183 52 11