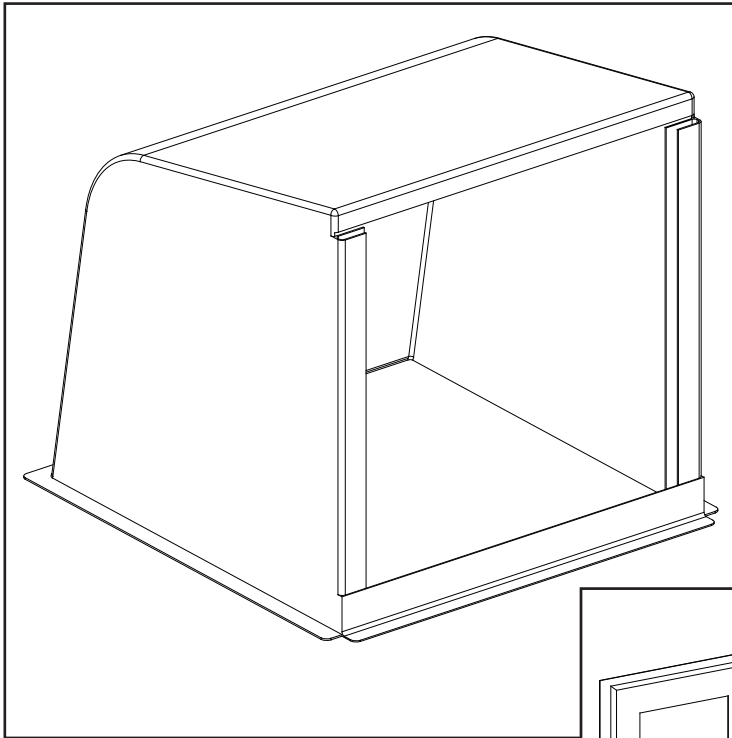
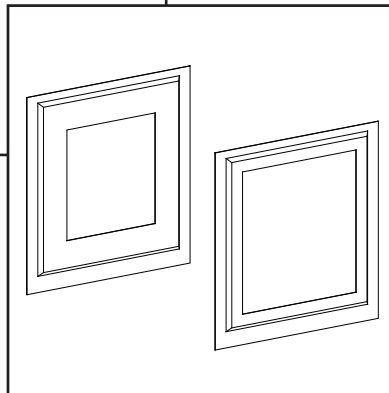


Instruction Manual

Fiberglass Pit Transition



FPTR



FPTA14

FPTA1618

Fiberglass Pit Transition

Models: FPTR • FPTA14 • FPTA1618 • FA1660 (optional)



Fiberglass Pit Transition

Instructions for Use and Maintenance

Thank You:

Thank you for purchasing a Munters Fiberglass Pit Transition. Munters equipment is designed to be the highest performing, highest quality equipment you can buy. With the proper installation and maintenance it will provide many years of service.

Please Note:

To achieve maximum performance and insure long life from your Munters product it is essential that it be installed and maintained properly. Please read all instructions carefully before beginning installation.

Warranty:

For Warranty claims information see the "Warranty Claims and Return Policy" form QM1021 available from the Munters Corporation office at 1-800-227-2376 or by e-mail at aghort.info@munters.com.

Conditions and Limitations:

- Products and Systems involved in a warranty claim under the "Warranty Claims and Return Policy" shall have been properly installed, maintained and operated under competent supervision, according to the instructions provided by Munters Corporation.
- Malfunction or failure resulting from misuse, abuse, negligence, alteration, accident or lack of proper installation or maintenance shall not be considered a defect under the Warranty.

Index

Chapters	Page
1. Unpacking the Equipment	4
1.1 Parts List	4
1.2 FPTR Dimensions	5
1.3 Typical Configurations	5
2. Installation Instructions	6
2.1 Configurations 1 or 2	6
2.2 Configuration 3	9
3. Maintenance	12

Unpacking the Equipment

1.

Before beginning installation, check the overall condition of the equipment. Remove packing materials, and examine all components for signs of shipping damage. Any shipping damage is the customer's responsibility and should be reported immediately to your freight carrier. Fan is shipped complete with all accessories.

1.1 Parts List

Each Pit Transition FPTR includes:

- 1 - Fiberglass Pit Transition
- 1 - Hardware Package As Follows:

HP1200 - Hardware Package for FPTR Pit Transition

ID	Qty.	Cat. No.	Description
[A]	6	KS2105	#14 x 1.5" Lag Screw, SS
[B]	6	KS2282	#10-16 x 3/4" HXWSR TEK Screw, SS

Each Pit Transition Adapter FPTA14/FPTA1618 includes:

- 1 - Fiberglass Adapter
- 1 - Hardware Package As Follows:

HP1210 - Hardware Package for FPTA Adapter

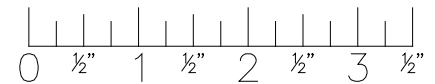
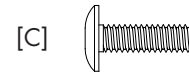
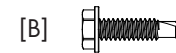
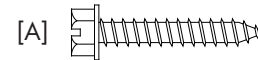
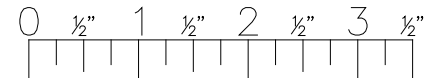
ID	Qty.	Cat. No.	Description
[C]	8	KS0650	1/4"-20 x 7/8" Truss Head Bolt, SS
[D]	8	KN0702	1/4"-20 Serrated Flange Hex Nut, SS

Optional - Fan Mounting Kit FA1660 includes:

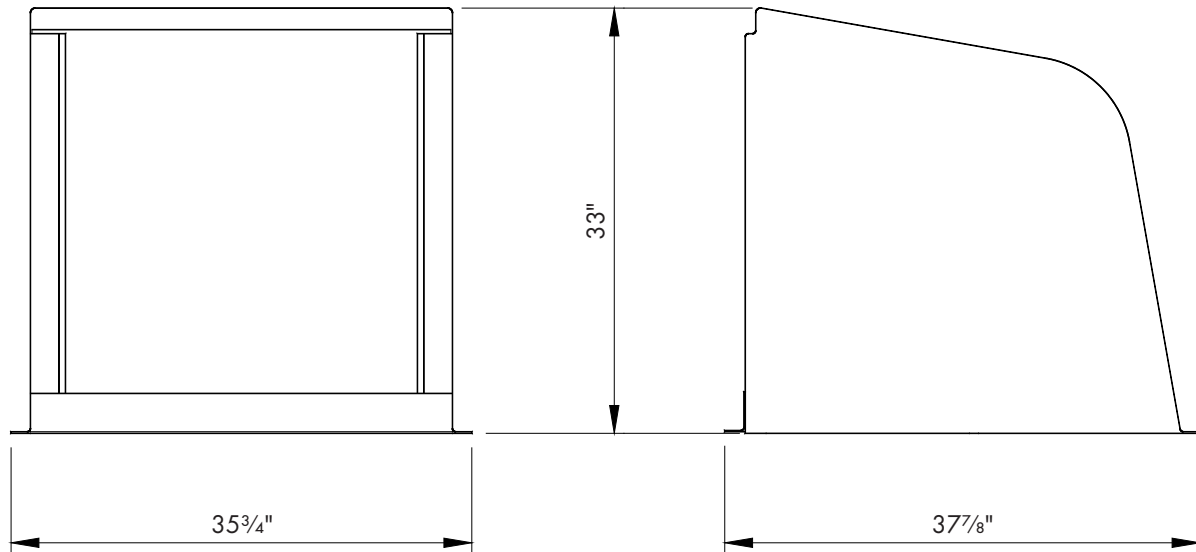
- 3 - Angles, 1.5" x 3" x 31", 90°, Fiberglass
- 1 - Hardware for FA1660 As Follows:

Hardware for FA1660

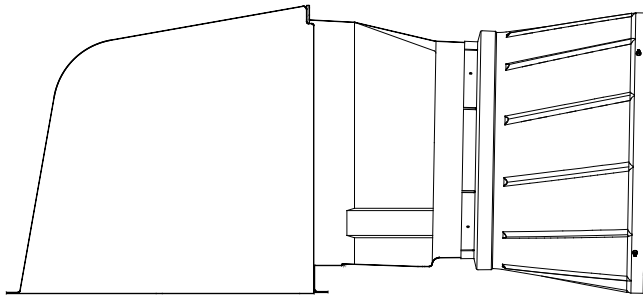
ID	Qty.	Cat. No.	Description
[B]	6	KS2282	#10-16 x 3/4" HXWSR TEK Screw, SS
[C]	15	KS0650	1/4"-20 x 7/8" Truss Head Bolt, SS
[E]	15	KN1717	1/4"-20 Hex Flange, Nylock Nut, SS



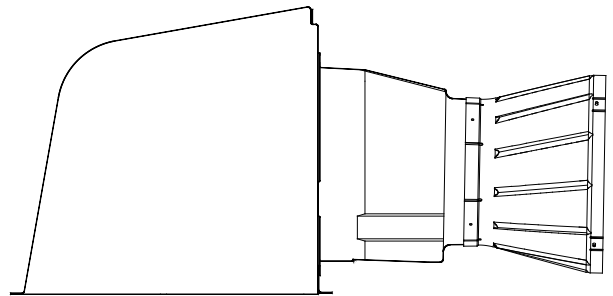
1.2 FPTR Dimensions



1.3 Typical Configurations



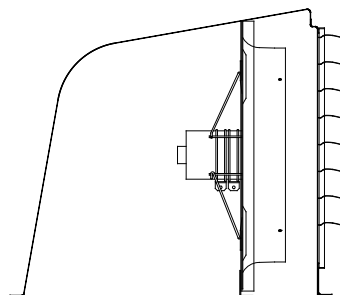
Configuration 1
24" VX Fan



Configuration 2
14" - 18" VX Fans

Note:

- If using Configuration 1 or 2 then proceed to Step 1
- If using Configuration 3, proceed to Step 8.



Configuration 3
14" - 24" Classic Fans

Installation Instructions

2.

2.1 Configuration 1 or 2 Installation

Step 1

Construct a framed opening of 32" x 32" in the pump-out lid or horizontal opening. *See Figure 1.* If pump-out lid or horizontal opening is concrete, it is recommended to frame a double treated 2 x 4 sill around the 32" sq. opening. *See Figure 2.*

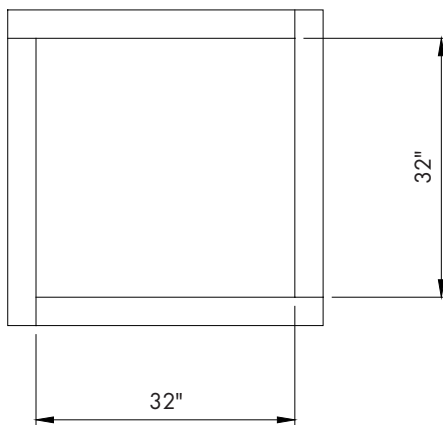


Figure 1

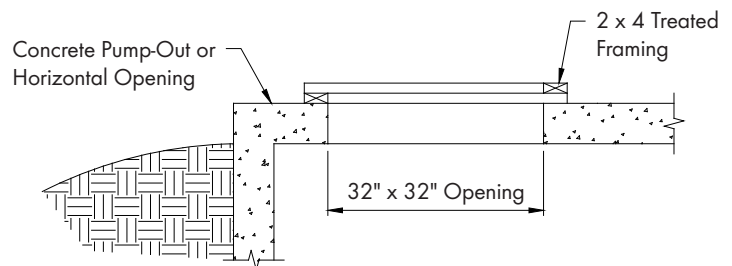


Figure 2

Step 2

Apply caulk around FPTR flange and secure FPTR to framing using (8) Lag Screws [A] provided.. *See Figure 3.*

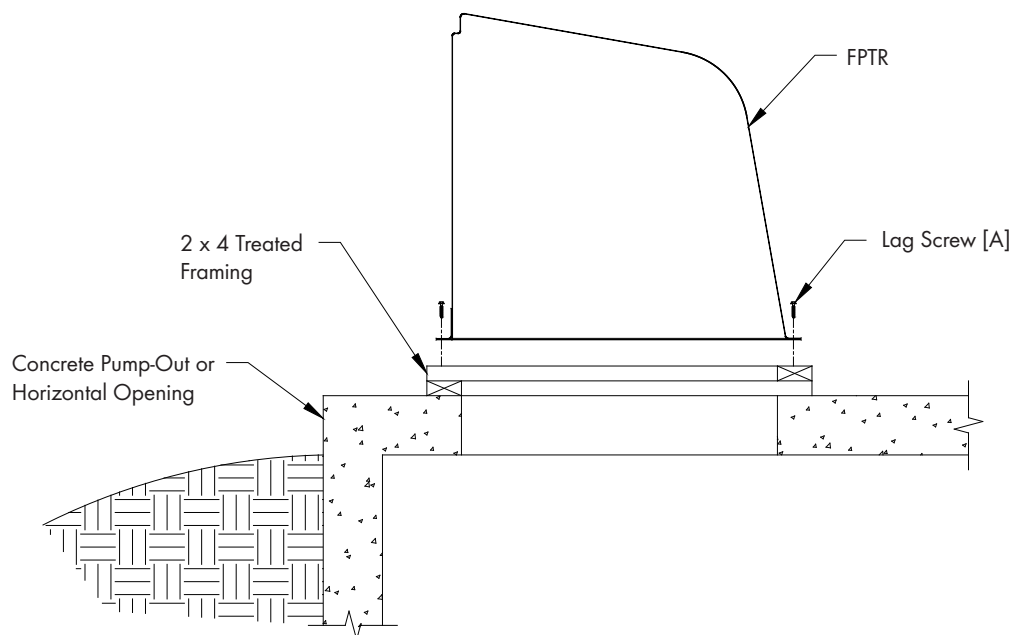


Figure 3

If using a 24" VX Fan then proceed to [Step 3](#). If using a 14", 16" or 18" VX Fan, proceed to [Step 4](#).

Step 3

Install Shutter into back of fan and slide fan into place in FPTR housing slots. [See Figure 4](#).

Installation Complete, proceed to [Step 15](#).

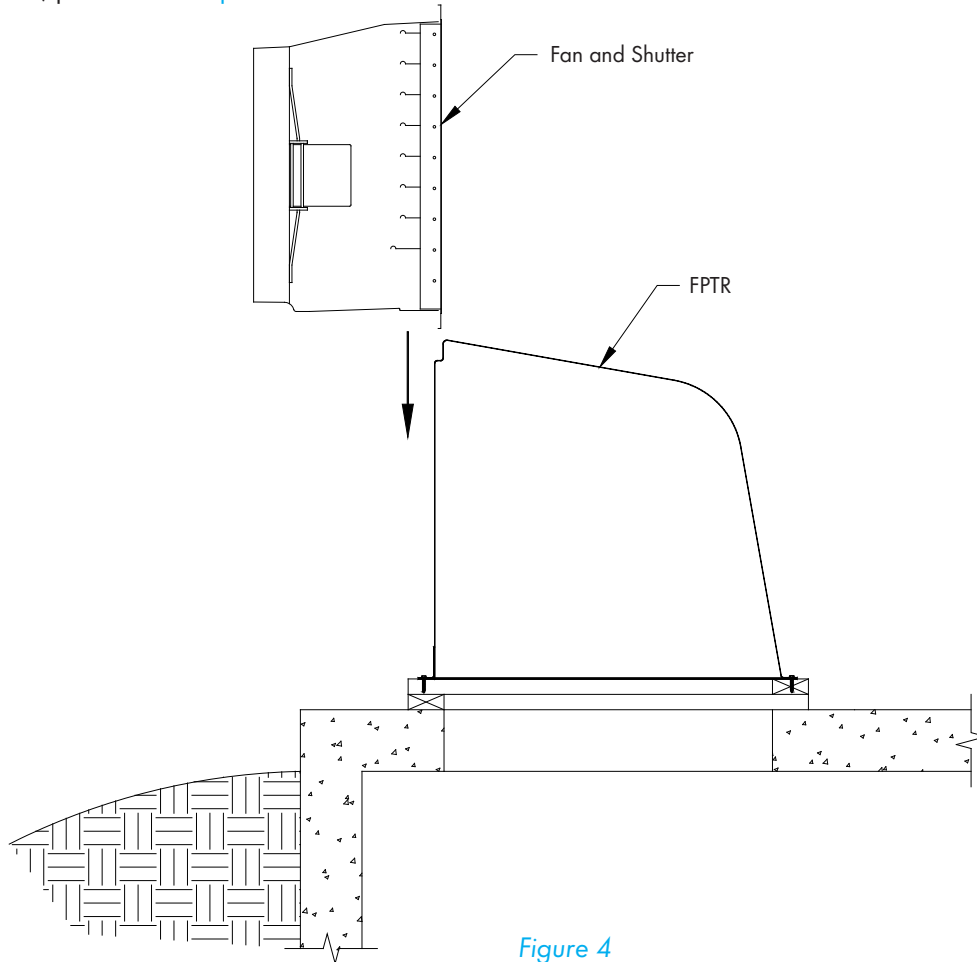


Figure 4

Step 4

Installation of 14", 16" or 18" VX Fan requires the use of the FPTA14 for 14" fans or the FPTA1618 for 16" or 18" fans. The Adapter comes with the proper opening pre-cut.

[See Figure 5](#).

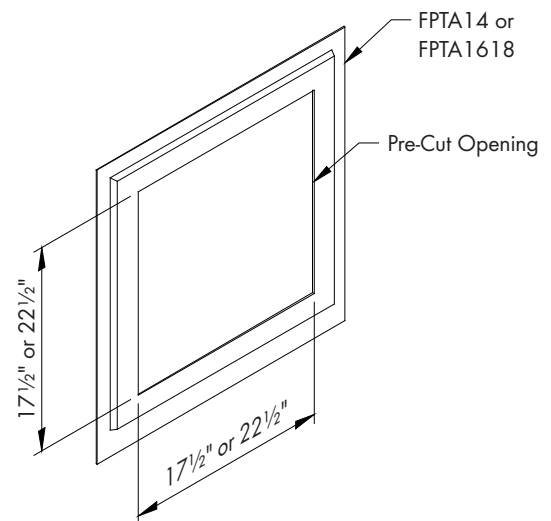


Figure 5

Step 5

Install shutter into back of fan. Insert fan with shutter thru opening in FPTA14 or FPTA1618 and secure with Bolts [C] and Nuts [D] provided. Be sure fan is installed thru FPTA from back side as shown.

See [Figure 6](#).

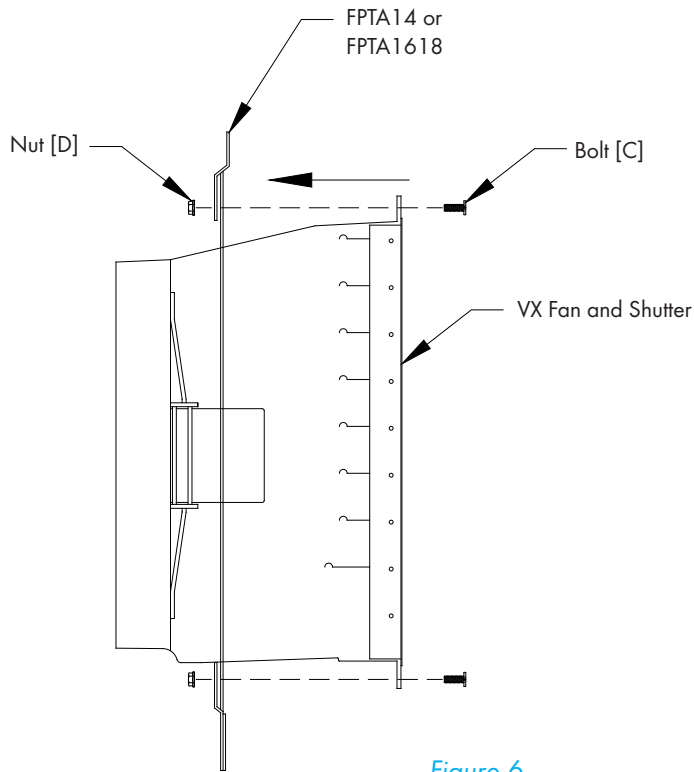


Figure 6

Step 6

Slide Adapter with Fan and Shutter into place in FPTR housing slots and secure Adapter in place using (8) TEK Screws [B]. See [Figure 7](#).

Step 7

Installation is now complete. Proceed to [Step 15](#).

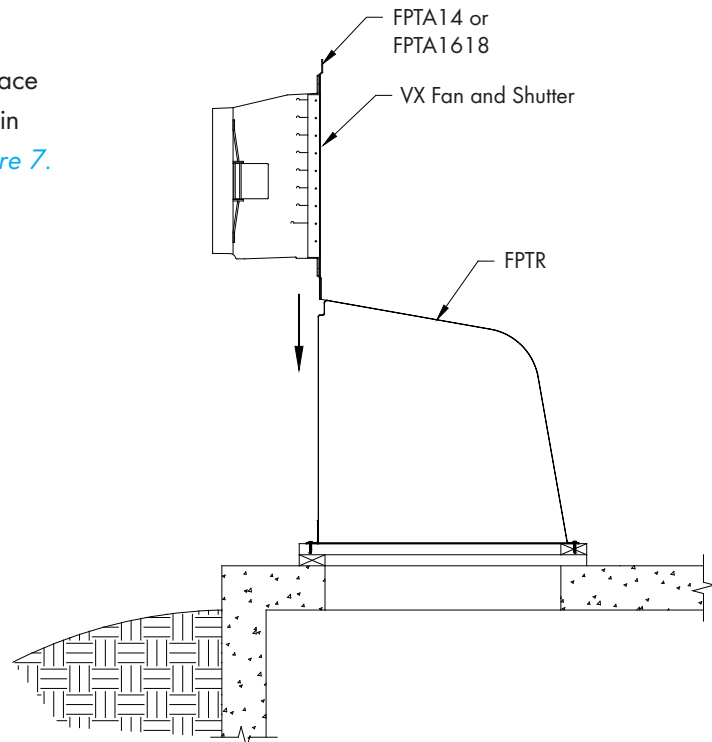


Figure 7

2.2 Configuration 3 Installation

If your fan is smaller than 24", a FPTA14 or FPTA1618 is required.

Step 8

Construct an opening of 24" x 32" in the pump-out lid or horizontal opening. See [Figure 8A](#). If pump-out lid is concrete, it is recommended to frame a double treated 2 x 4 sill around 24" x 32" opening, with an extra frame piece across the front of the opening. See [Figure 8B and 8C](#).

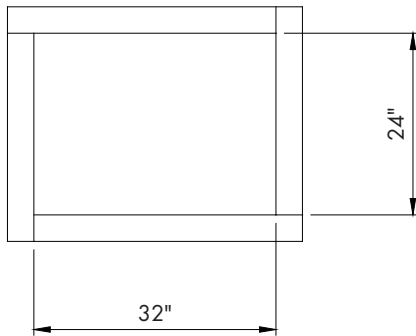


Figure 8A

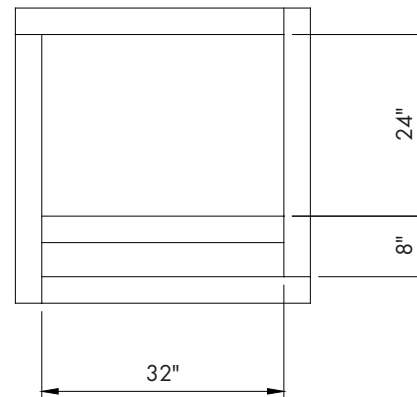


Figure 8B

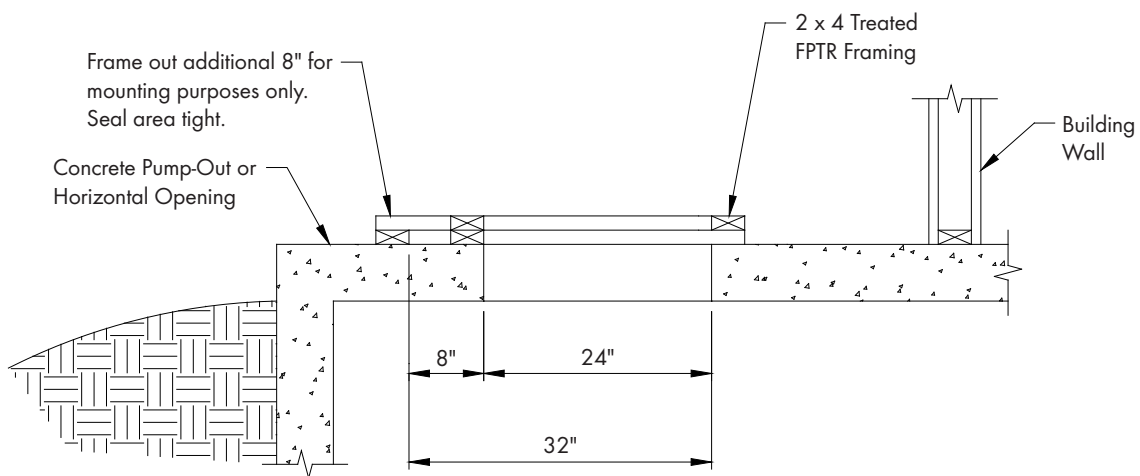


Figure 8C

Step 9

With FPTR opening facing you, measure 8" back from inside of FPTR. Place one angle piece against wall of FPTR, keeping 1 1/2" side of angle against wall and the 3" side facing out. *See Figure 9.* Secure angle piece to FPTR using (3) Bolts [C] and Nylock Nuts [E]. Repeat for opposite side.

Step 10

Slide Fan or Fan with FPTA up into FPTR and place against the 3" angles and push to top of FPTR. Using the pre-drilled holes in the fan's flange, drill thru the angle pieces and attach fan using (3) Bolts [C] and Nylock Nuts [E] in each side. *See Figure 10.*

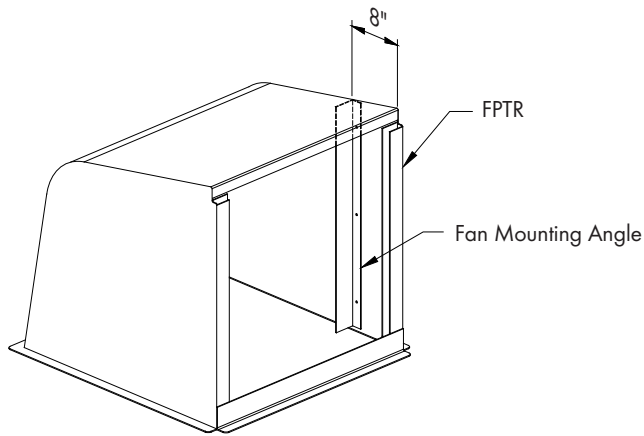


Figure 9

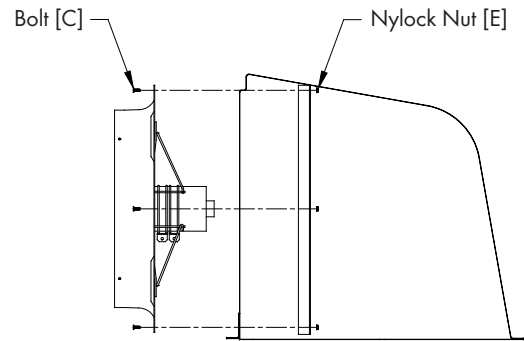


Figure 10

Step 11

Run a bead of caulk where top of fan meets FPTR. *See Figure 11.*

Step 12

Attach last angle piece to bottom of fan, making sure to keep bottom of angle flush with bottom of FPTR. *See Figure 12 and 13.*

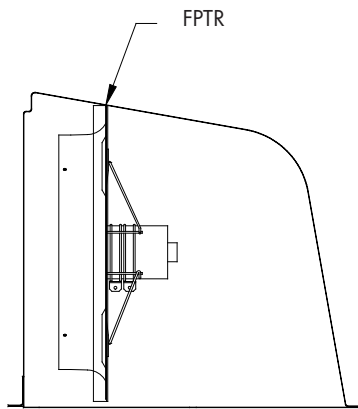


Figure 11

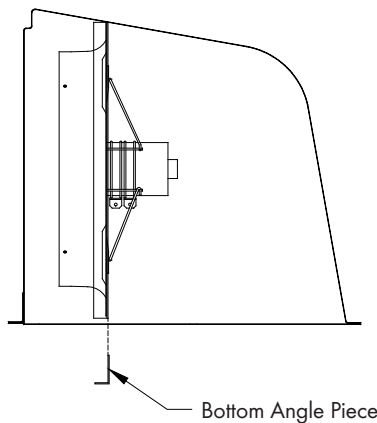


Figure 12

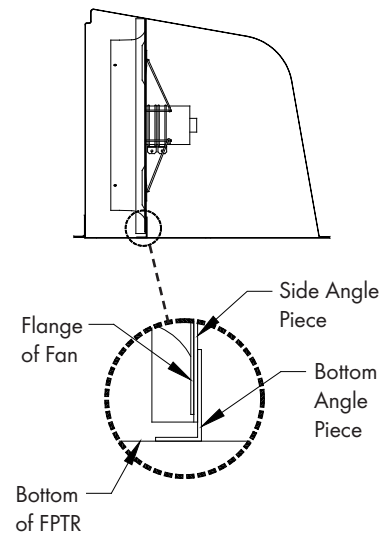


Figure 13

Step 13

Apply caulk around FPTR flange and on Bottom Angle Piece and secure to framing using (8) Lag Screws [A] in FPTR and (3) TEK Screws [B] in Bottom Angle. *See Figure 14.*

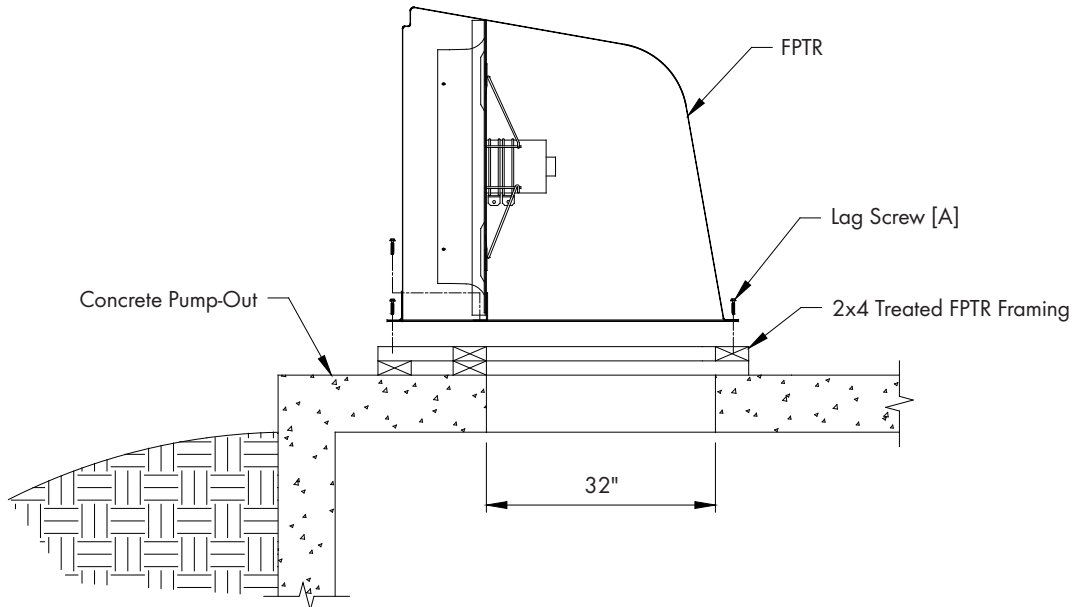


Figure 14

Step 14

If a PZ24 shutter is being used then slide it into the slots of the FPTR and secure it using (6) TEK Screws [B]. *See Figure 15.* Installation is now complete. Proceed to [Step 15](#).

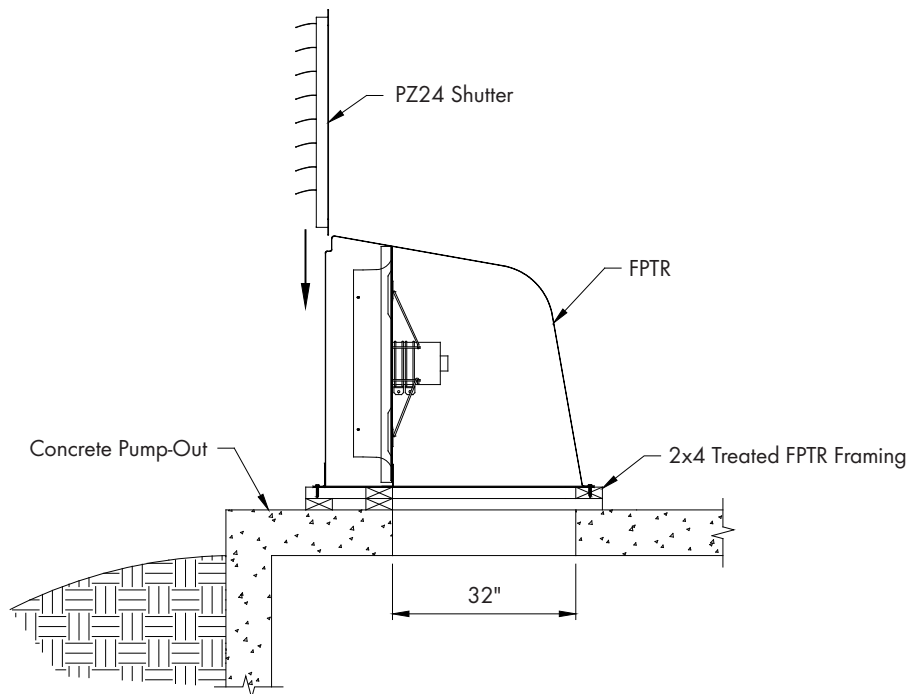


Figure 15

Step 15

Fans should be installed according to their instructions and should be wired in accordance with National, State and Local electrical codes. Disconnect electrical power at the main service panel. When wiring fan, allow extra cord for fan removal and maintenance.

3.1 Maintenance

The following inspection and cleaning procedures should be performed monthly:

- 1) **INSPECT PROPELLER:** Check that propeller is secure on motor shaft and that there are no signs of damage. The blades are of a self-cleaning design and should not require maintenance.
- 2) **CLEAN** regularly for best results:
 - **FAN MOTOR:** Remove any dust accumulation from motor using a brush or cloth. (DO NOT use a pressure washer). A clean motor will run cooler and last longer. At the same time, verify that the motor is secure in its mount.
 - **SHUTTER:** Clean any dust accumulations from shutter blades and frame so that shutter opens and closes freely. A brush or cloth should be used.
- 3) **CHECK FASTENERS:** For safety, all fasteners should be inspected 1 month after initial operation and yearly thereafter. Tighten any loose connections.
- 4) **INSPECT FAN CONTROL:** With power disconnected, inspect all electrical connections. Wiring should be secure and in good condition. Remove any dust build-up from control case and sensor using a soft brush or cloth. **NEVER CLEAN ELECTRICAL EQUIPMENT WITH A PRESSURE WASHER!**



This page left blank intentionally

Fiberglass Pit Transitions are developed and produced by Munters Corporation, Lansing, Michigan U.S.A. 1-800-227-2376



Munters Europe AB, Isafjordsgatan 1, P.O. Box 1150, SE-164 26 Kista, Sweden. Phone +46 08 626 63 00, Fax +46 8 754 56 66.

Munters Corporation 2691 Ena Drive Lansing, MI 48917 U.S.A. Phone +1 800-227-2376, Fax +1 517-676-7078

www.munters.us

Australia Munters Pty Limited, Phone +61 2 6025 6422, **Brazil** Munters Brasil Industria e Comercio Ltda, Phone +55 41 3317 5050, **Canada/US** Munters Corporation Lansing, MI Phone +1 517 676 7070, **China** Munters Air Treatment Equipment (Beijing) Co. Ltd, Phone +86 10 80 481 121, **Denmark** Munters A/S, Phone +45 9862 3311, **India** Munters India, Phone +91 20 3052 2520, **Indonesia** Munters, Phone +62 818 739 235, **Italy** Munters Italy S.p.A., Chiusavecchia, Phone +39 0183 52 11, **Japan** Munters K.K., Phone +81 3 5970 0021, **Korea** Munters Korea Co. Ltd., Phone +82 2 761 8701, **Mexico** Munters Mexico, Phone +52 818 262 54 00, **Russia** Munters AB, Phone +7 812 448 5740, **Singapore** Munters Pte Ltd., Phone +65 744 6828, **South Africa and Sub-Sahara Countries** Munters (Pty) Ltd., Phone +27 11 997 2000, **Spain** Munters Spain S.A., Phone +34 91 640 09 02, **Sweden** Munters AB, Phone +46 8 626 63 00, **Thailand** Munters Co. Ltd., Phone +66 2 642 2670, **Turkey** Munters Form Endüstri Sistemleri A.Ş, Phone +90 322 231 1338, **USA** Munters Corporation Lansing, MI Phone +1 517 676 7070, **Vietnam** Munters Vietnam, Phone +84 8 3825 6838, **Export & Other countries** Munters Italy S.p.A., Chiusavecchia Phone +39 0183 52 11