

Munters Modular ChilledWall

Data Center Cooling System

Standard Features

- EC plenum fans with outlet screen
- Draw through fan arrangement for better energy consumption and higher return air temperature applications
- Factory piping including water control valve, isolation valves, strainer, vent valve and drain valve
- Integral stainless steel drain pans with single drain outlet per module
- 4" MERV 8 filters
- Galvalume unpainted casing

The Modular ChilledWall (MCW) data center cooling system comprises modular fan-coil arrays providing incremental cooling capacity options. Each 1x2 module provides 150 kW of cooling capacity based on a 20°F air side temperature change. The system provides designers with options to optimize cooling capacity and electrical infrastructure.

Water coils are selected to minimize approach temperatures resulting in improved overall system efficiency. Low outlet air velocity, high capacity per lineal foot of wall length, and side-by-side mount with no clearance satisfy the demands of higher density data center designs.

Each MCW module is complete with single point water connections and factory controls to minimize field work during installation, startup and testing. Single point or dual point power connections with transfer switch support various resiliency plans.

The MCW fan-coil array system floods the white space with low outlet velocity cooling air. This arrangement optimizes the use of building space and provides flexibility for low, medium and high density deployments.



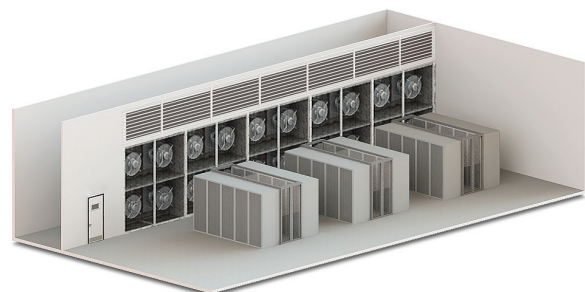
MCW 1x2



MCW 2x2



MCW 3x2



Data hall with MCW cooling system

Munters Modular ChilledWall

Data Center Cooling System

Options

- Enhanced surface area water coils for tight approach between air and fluid temperatures
- MERV 11 or 13 filters
- Factory controls with group control options
- Dual point power feed with ATS
- Controls power UPS
- Painted casing

MCW Performance Chart

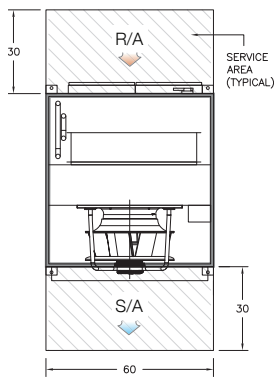
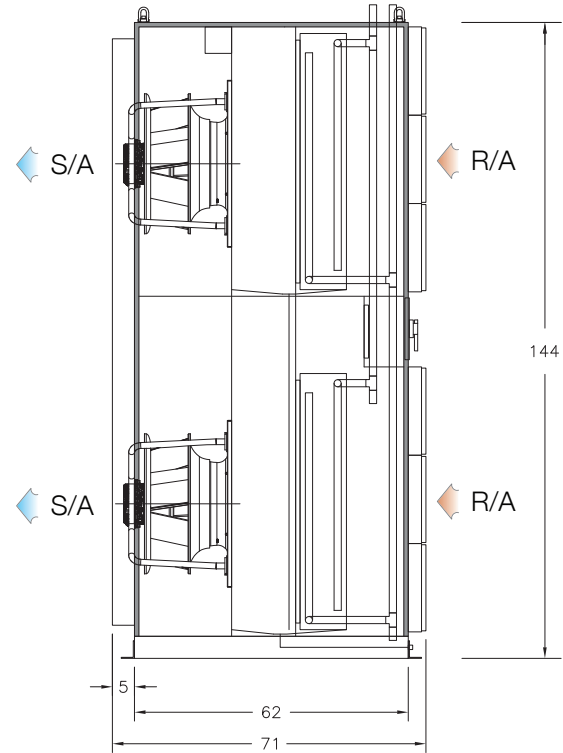
20°F Delta T (Air Side)	MCW 1x2	MCW 2x2	MCW 3x2
Supply CFM	23,000	46,000	69,000
Cooling Capacity (kW)	146	292	439
Fluid Flow (14 Deg. Delta T)	77	153	230

25°F Delta T (Air Side)	MCW 1x2	MCW 2x2	MCW 3x2
Supply CFM	23,000	46,000	69,000
Cooling Capacity (kW)	183	366	548
Fluid Flow (14 Deg. Delta T)	94	189	283

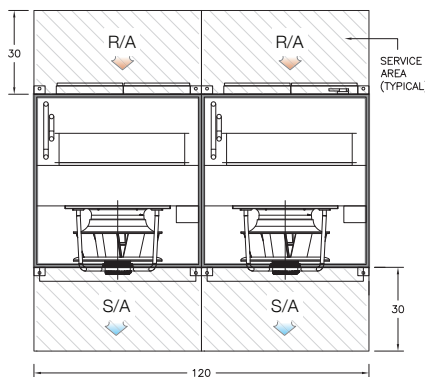
Note: Air and fluid side design temperatures, fluid glycol percentage and site altitude will impact performance.

Water flow is GPM. All dimensions in inches.

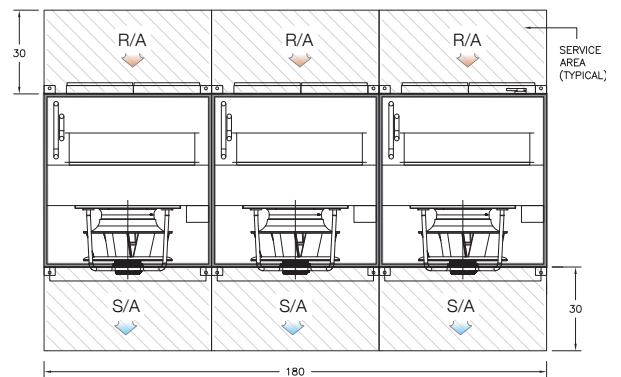
Elevation View Section (All MCW Models)



Plan View Section
MCW 1x2



Plan View Section
MCW 2x2



Plan View Section
MCW 3x2

Find your nearest Munters office at www.munters.com

Munters reserves the right to make alterations to specifications, quantities, etc., for production or other reasons, subsequent to publication. © Munters AB, 2021