



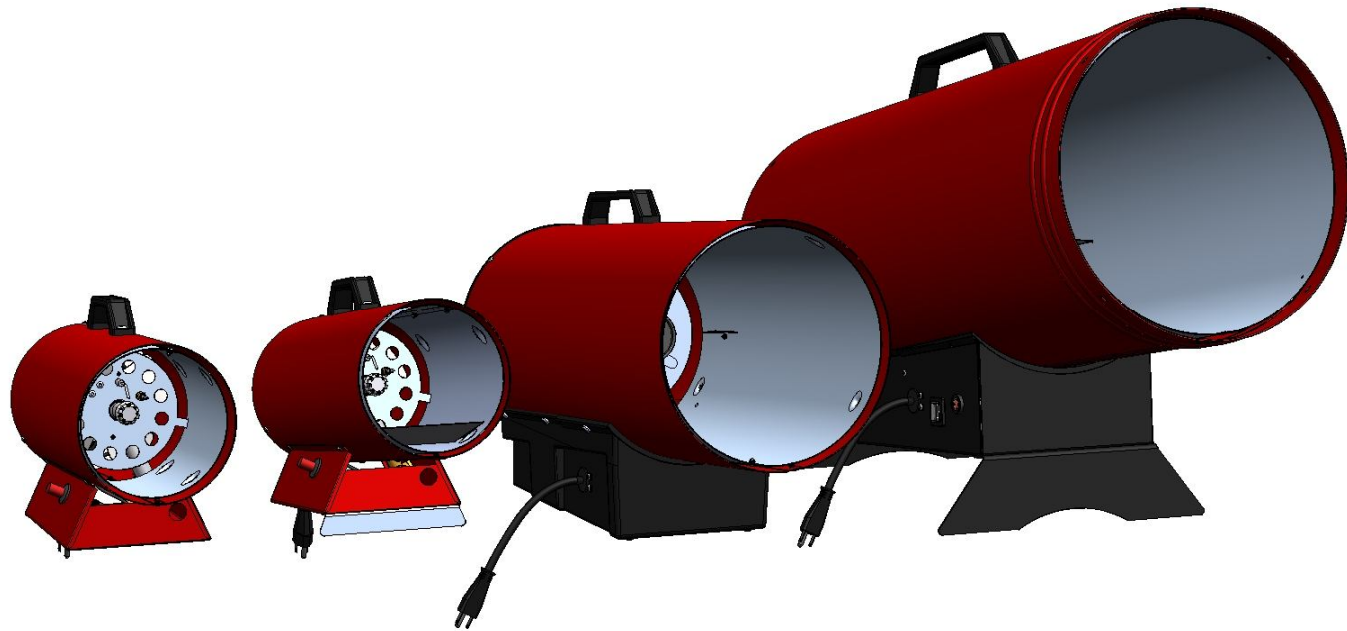
Munters
SIAL[®]

**Portable Propane/LP
Heaters
KID MU - KID AU**

***Service
Training Course***



The KID Product Line Propane Gas Heaters

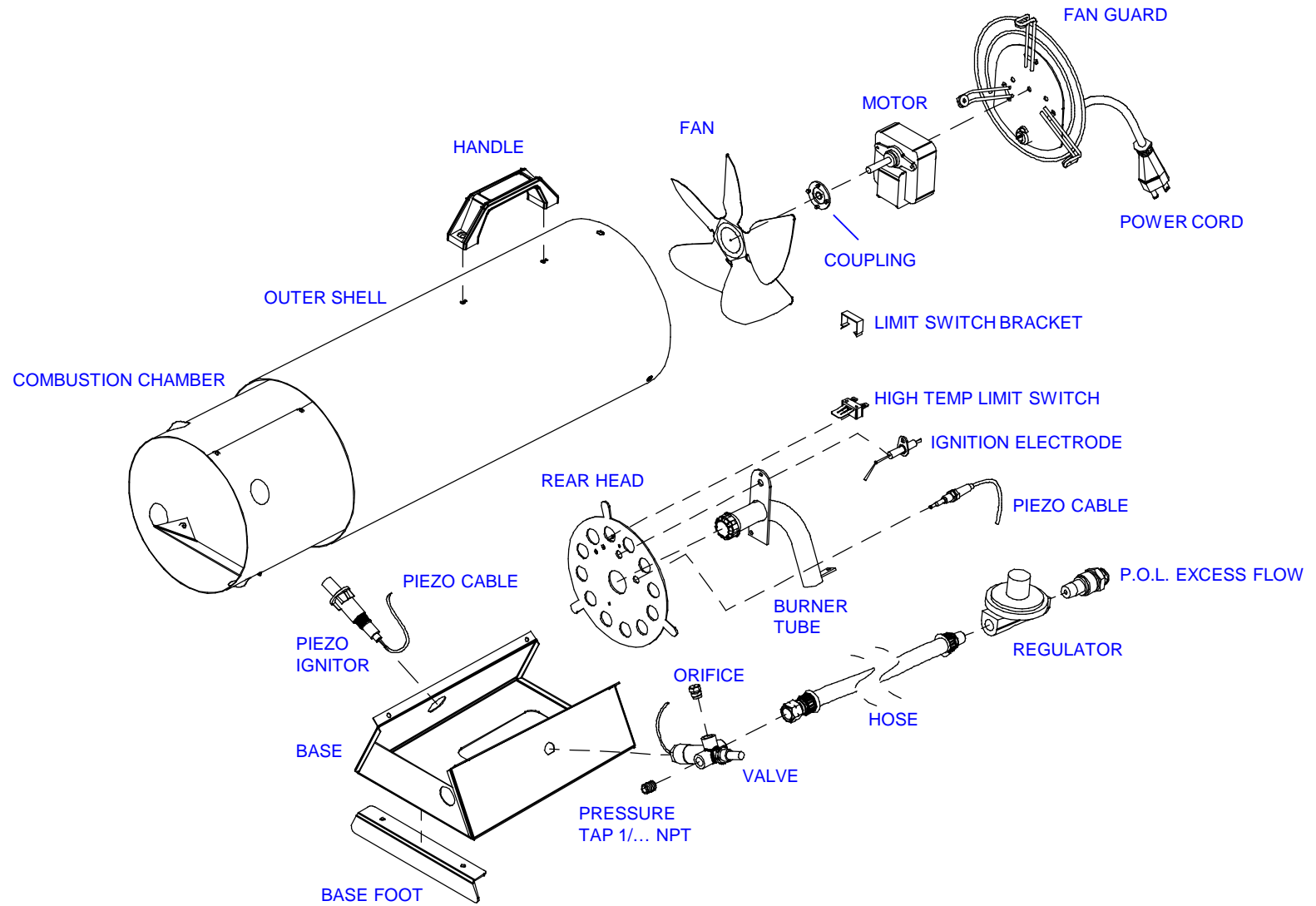


KID 10 MU
KID 15 MU
KID 30 MU
KID 40 MU
KID 60 AU
KID 80 AU

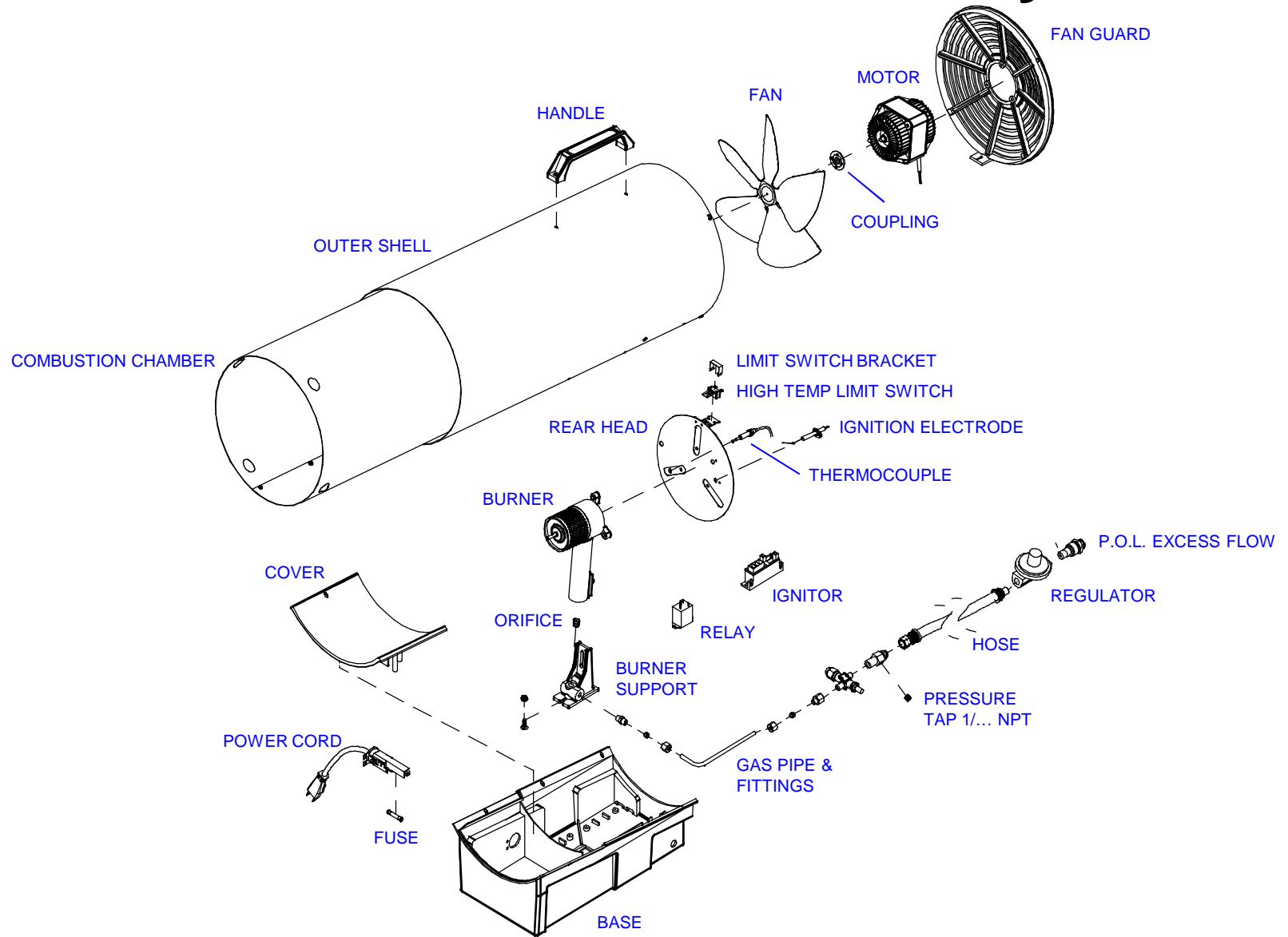
34,500 Btu/hr
49,600 Btu/hr
106,500 Btu/hr
148,000 Btu/hr
115,000 - 200,000 Btu/hr
225,000 - 280,000 Btu/hr

Manual Ignition
Continuous Ignition
Electronic Ignition

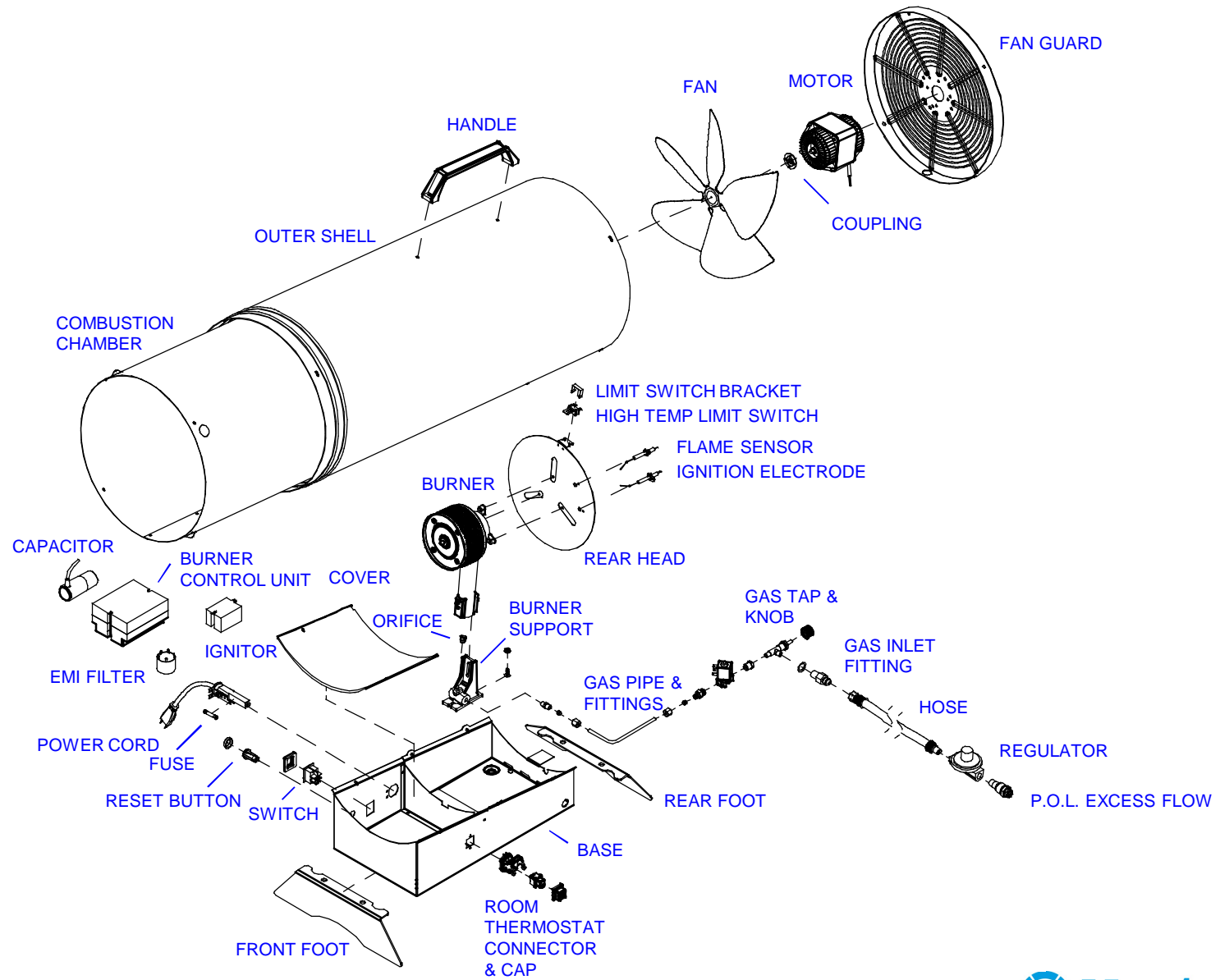
KID 10/15 MU - Assembly



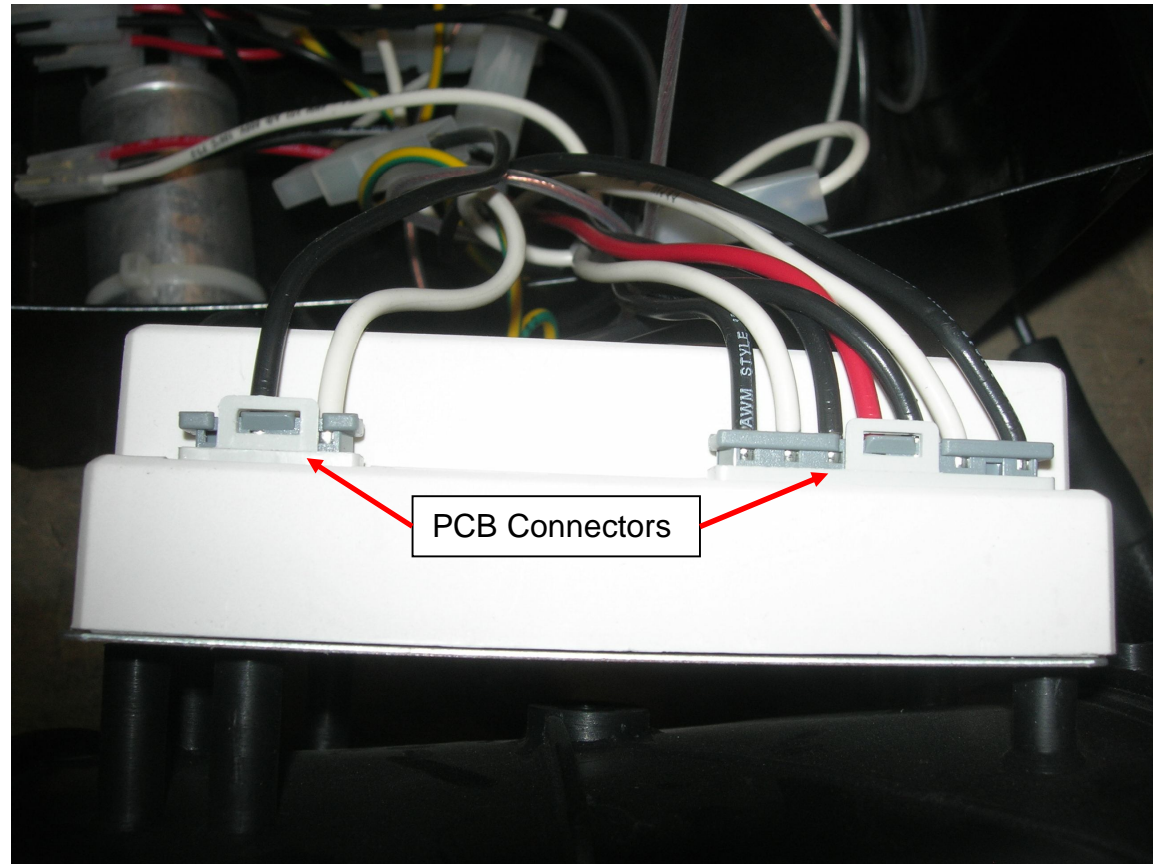
KID 30/40 MU - Assembly



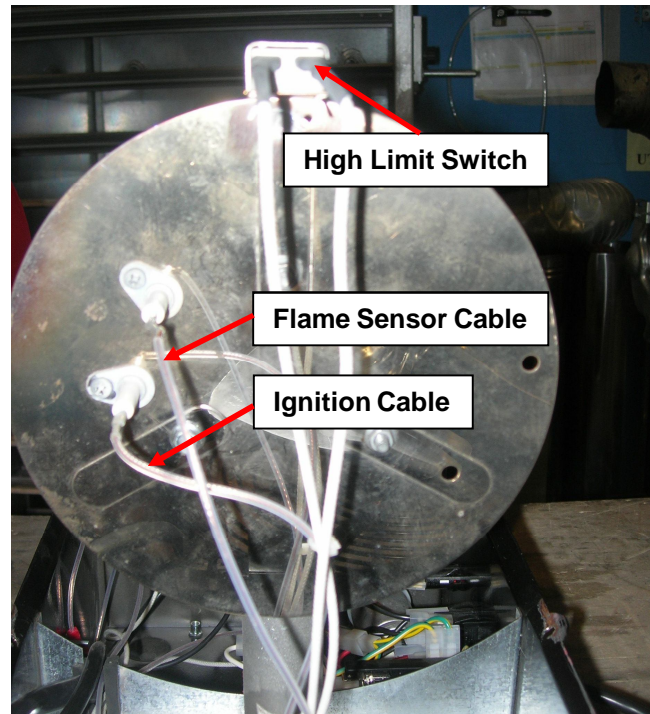
KID 60/80 AU - Assembly



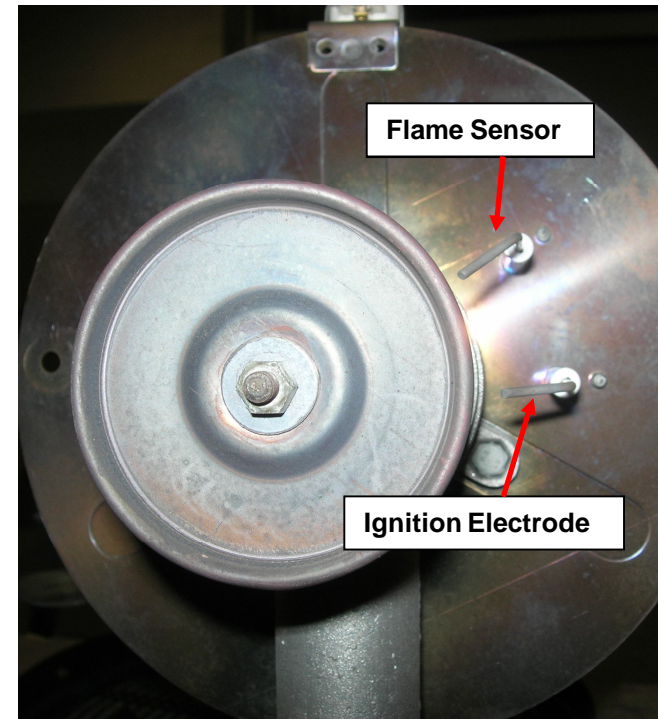
Kid 60 & 80 Electronic Board



Kid 60 & 80 Burner Disc



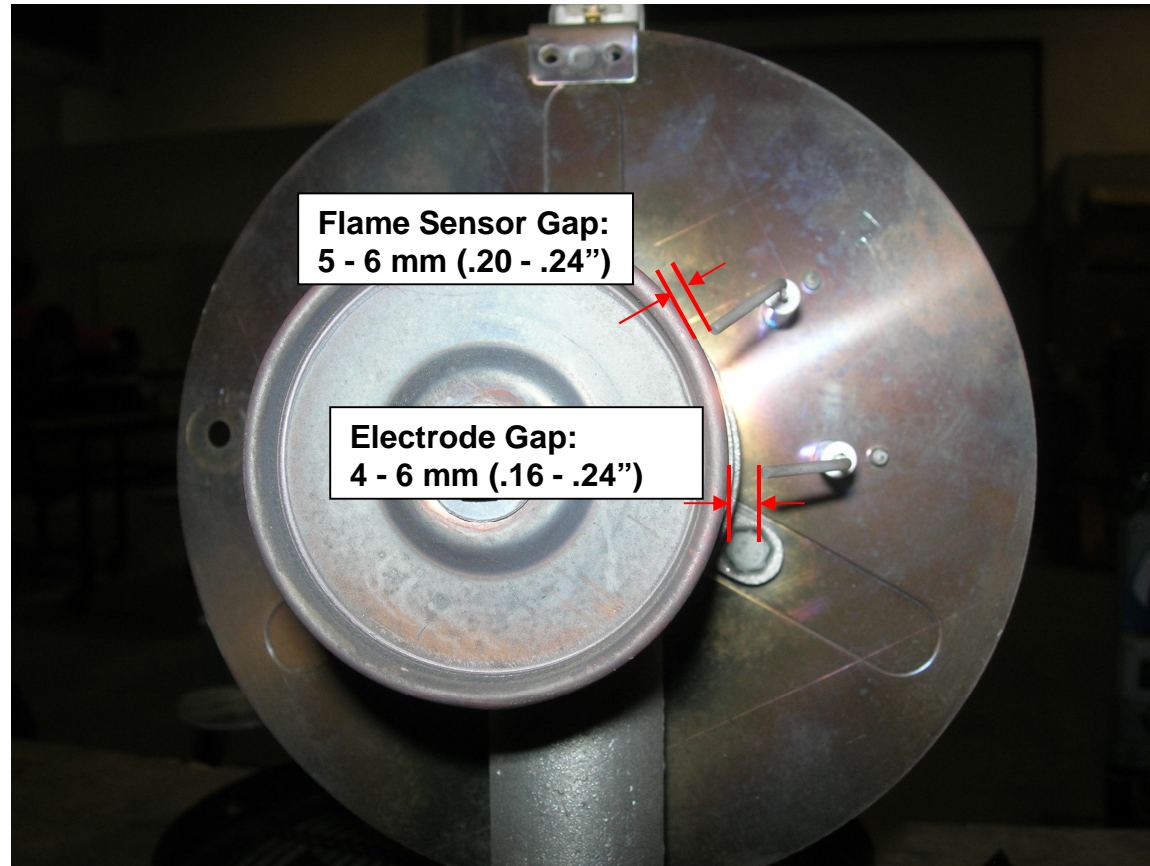
Rear



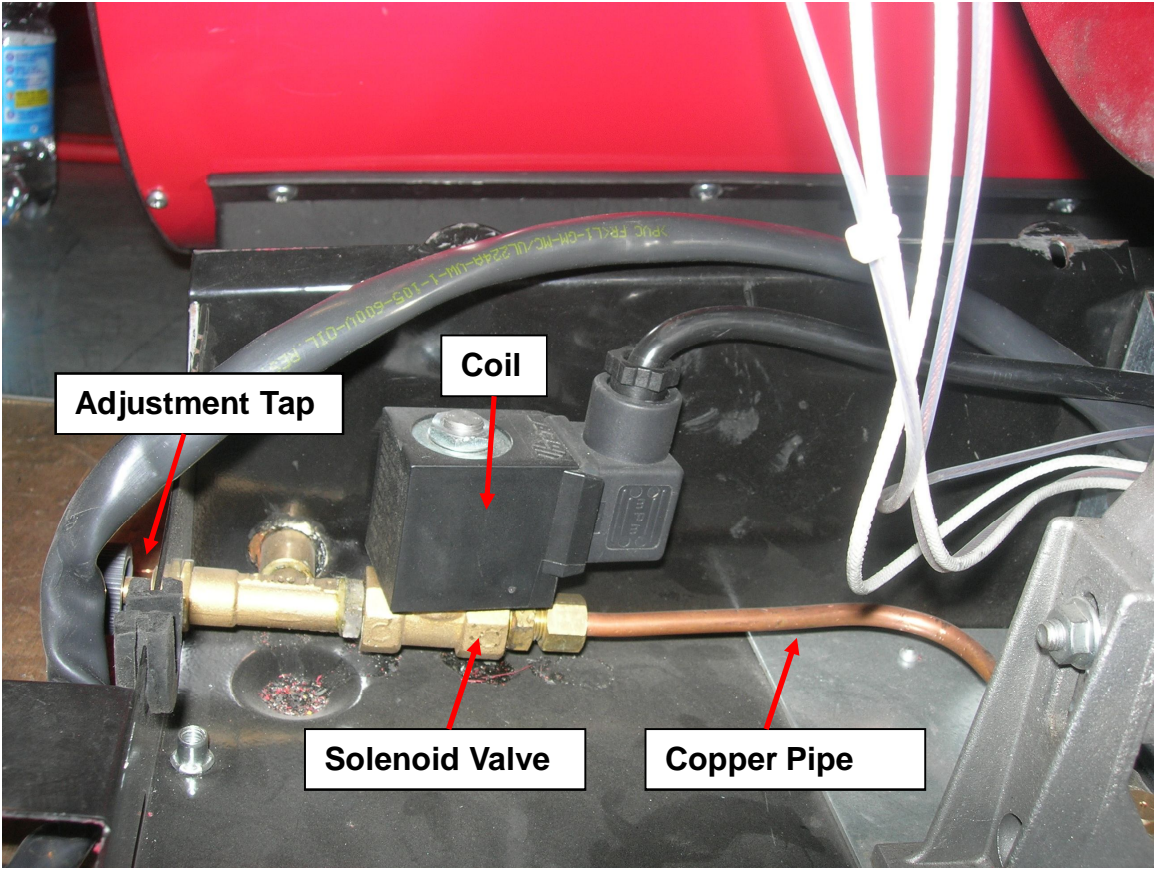
Front

Kid 60 & 80

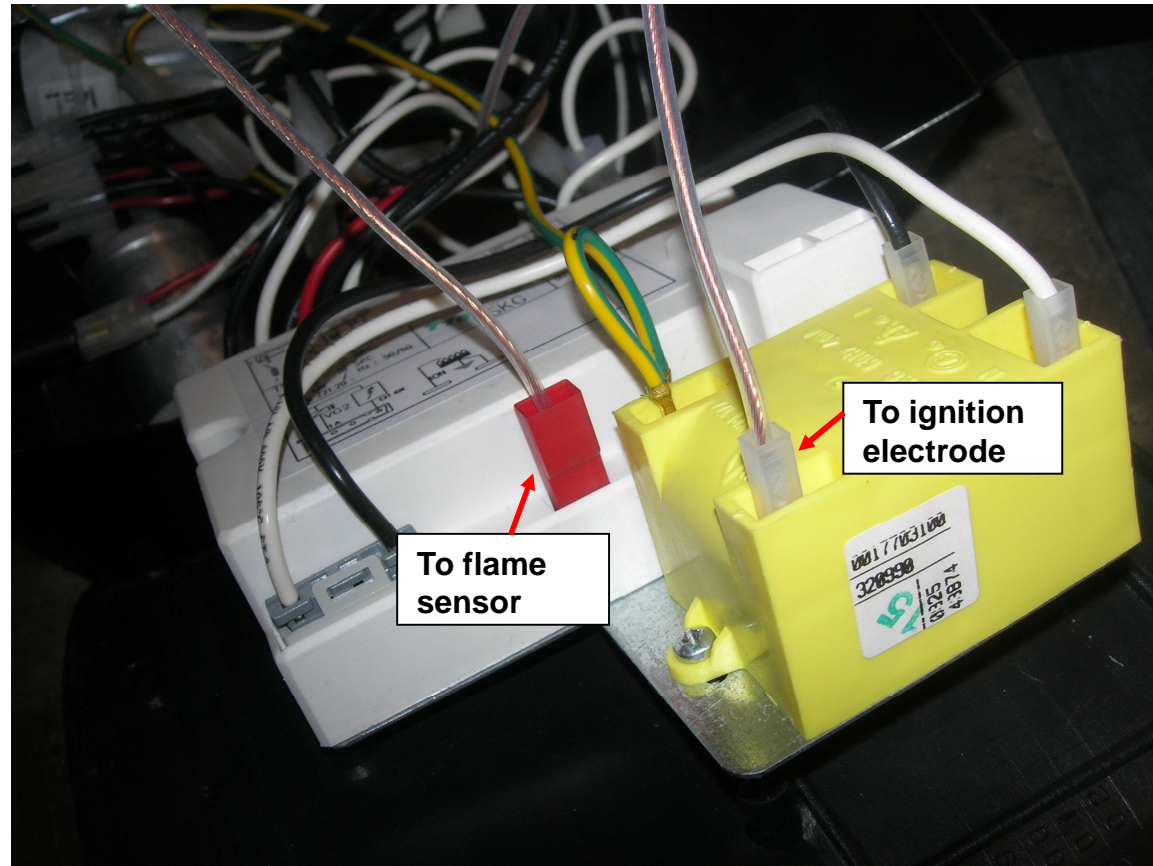
Electrode and Sensor Gaps



Kid 60 & 80 Gas Circuit

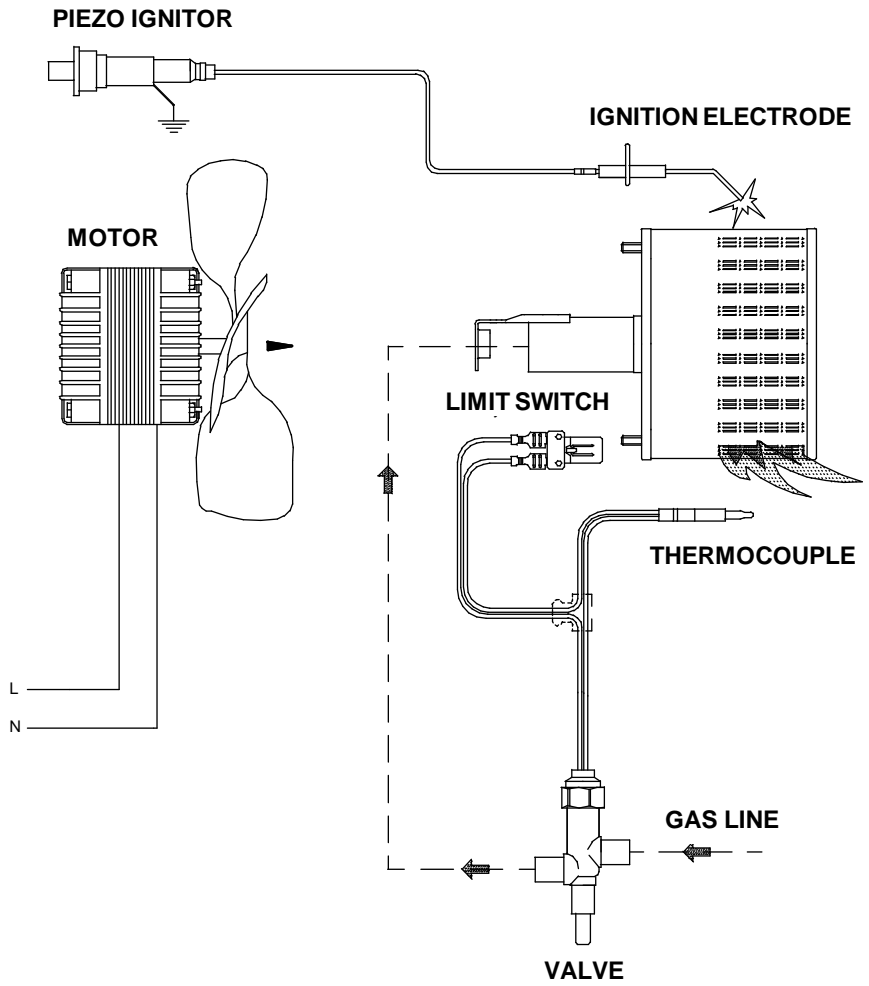


Kid 60 & 80 Electronic Board and Ignitor

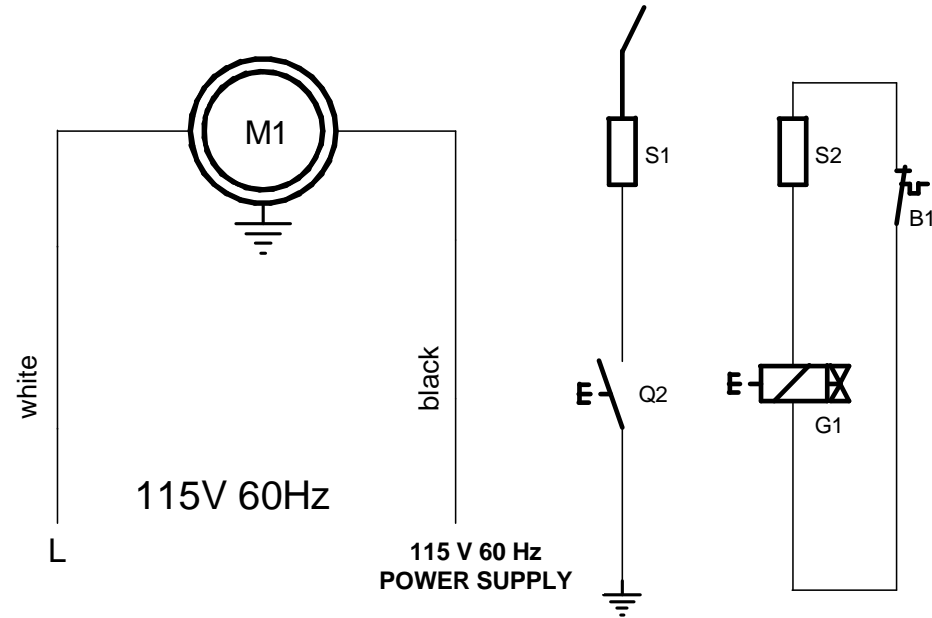


KID 10/15

Functional Parts

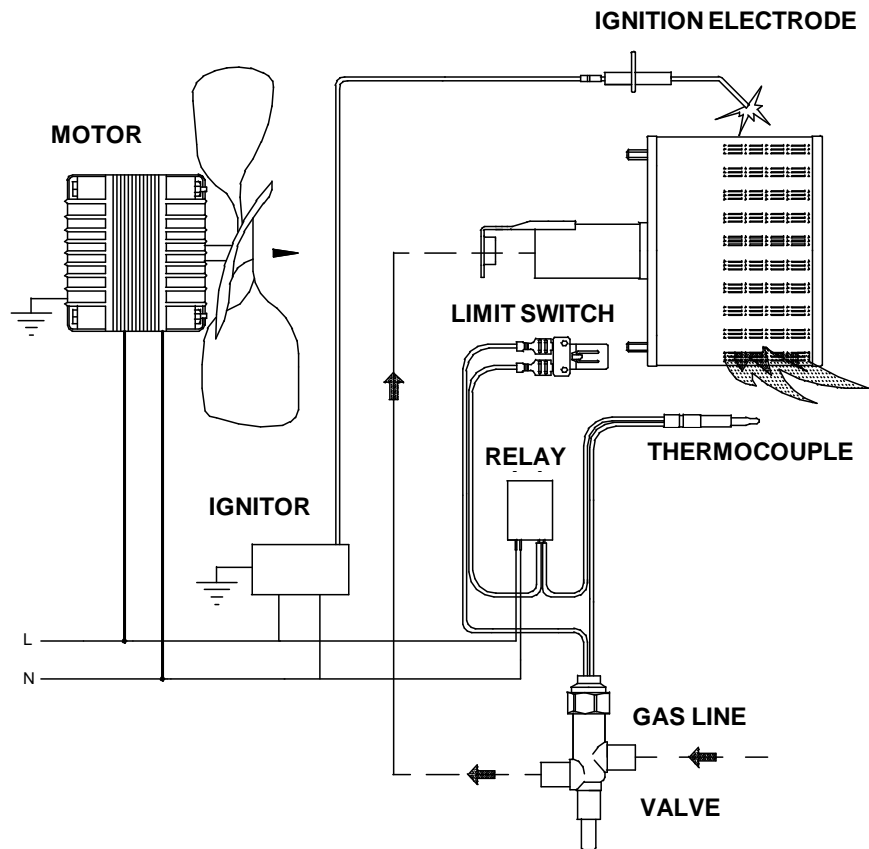


KID 10/15 Wiring Diagram

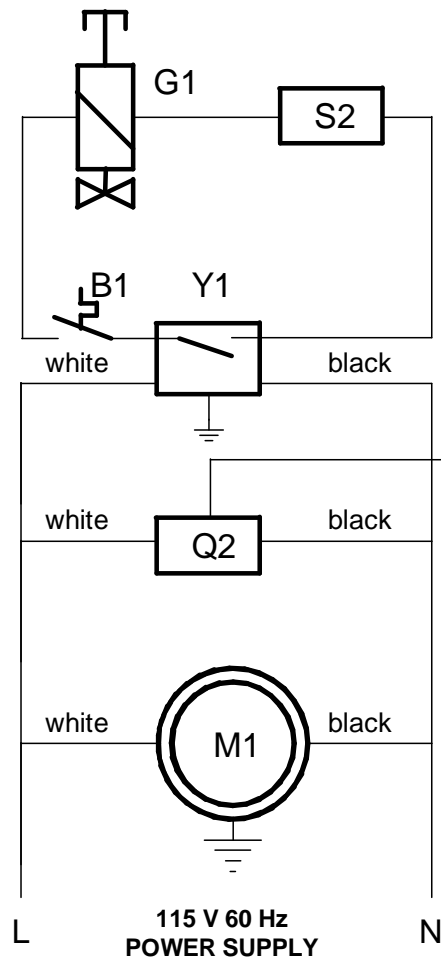


- | | |
|----|-------------------------------------|
| M1 | MOTOR |
| S1 | IGNITION ELECTRODE |
| Q2 | PIEZO IGNITOR |
| S2 | THERMOCOUPLE |
| B1 | HIGH LIMIT SWITCH (NORMALLY CLOSED) |
| G1 | VALVE |

KID 30/40 MU Functional Scheme

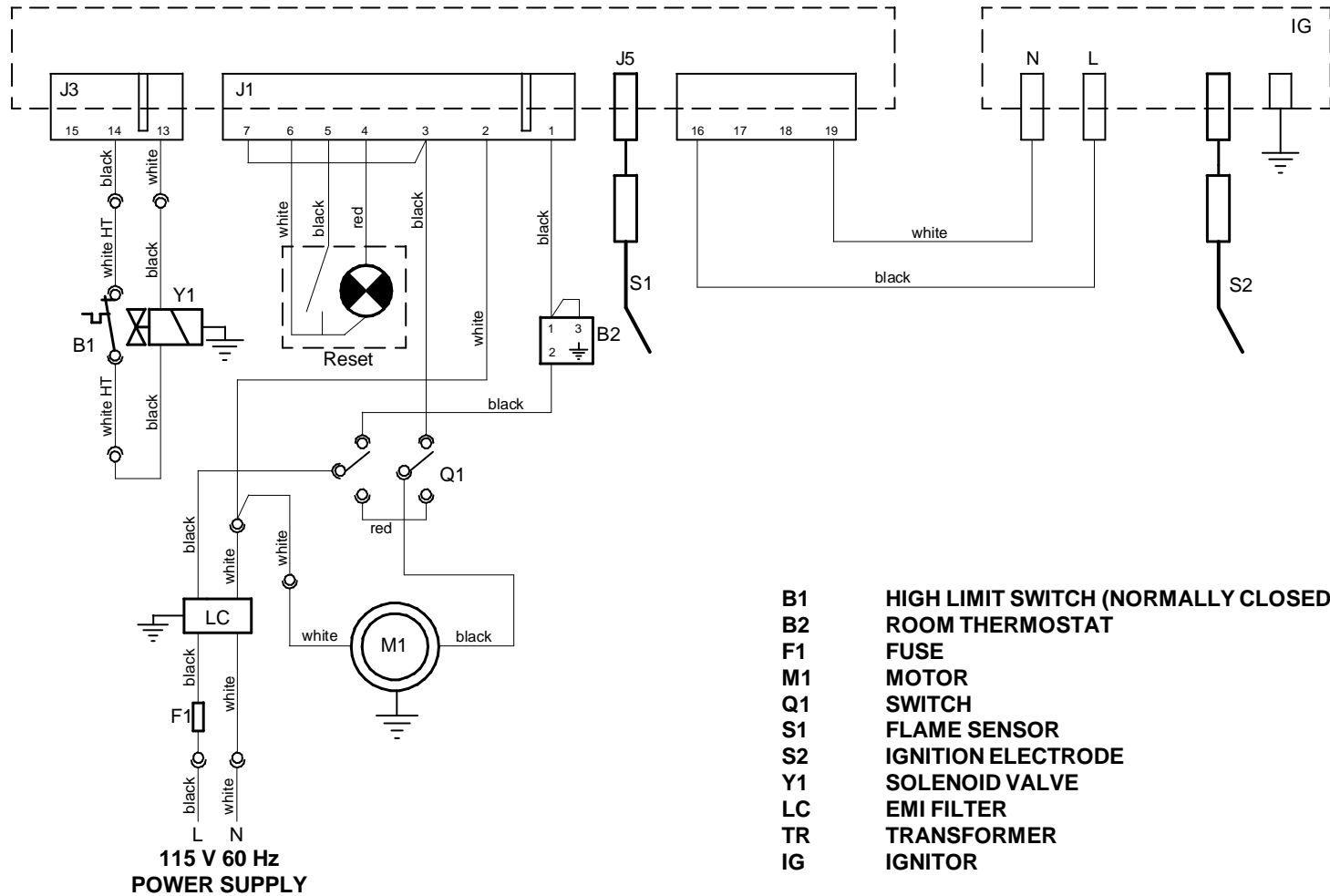


KID 30/40 MU Wiring Diagram



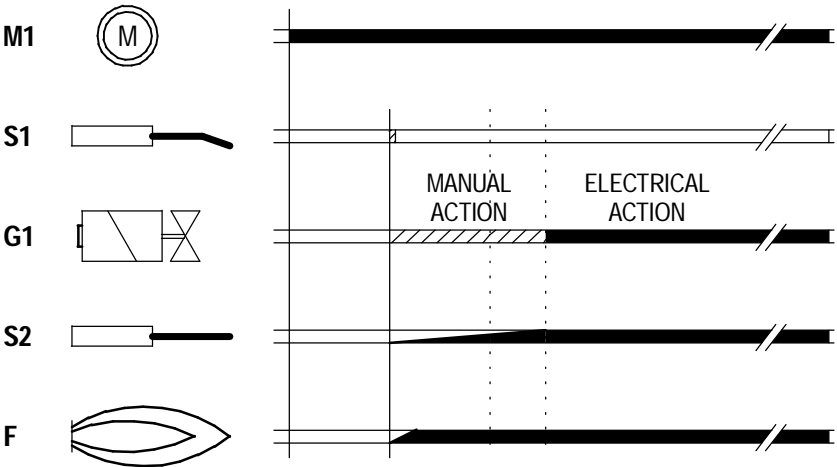
- | | |
|----|-------------------------------------|
| M1 | MOTOR |
| S1 | IGNITION ELECTRODE |
| Q2 | IGNITOR |
| S2 | THERMOCOUPLE |
| B1 | HIGH LIMIT SWITCH (NORMALLY CLOSED) |
| G1 | VALVE |
| Y1 | RELAY (NORMALLY CLOSED) |

KID 60/80 AU Wiring Diagram



KID 10/15 MU

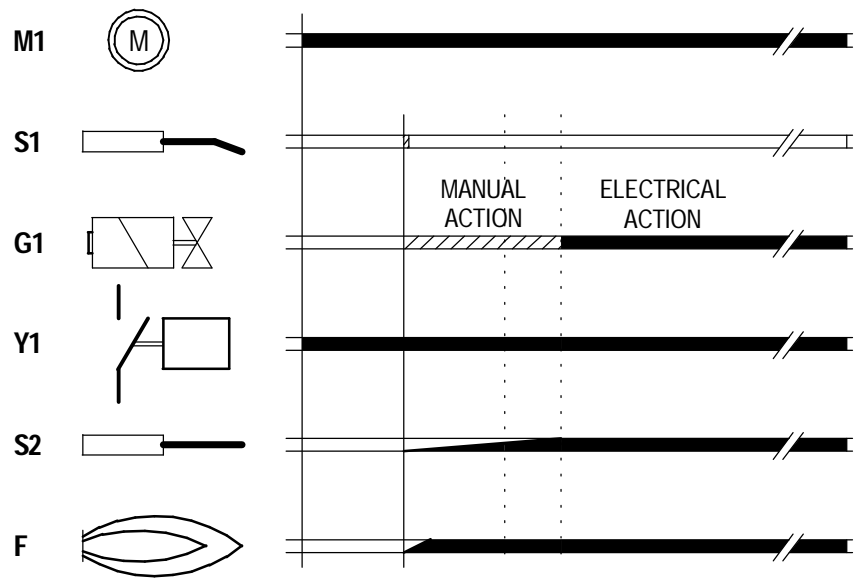
Operational Sequence



M1	MOTOR
S1	IGNITION ELECTRODE
G1	GAS VALVE
S2	FLAME SENSOR
F	FLAME SIGNAL

KID 30/40 MU

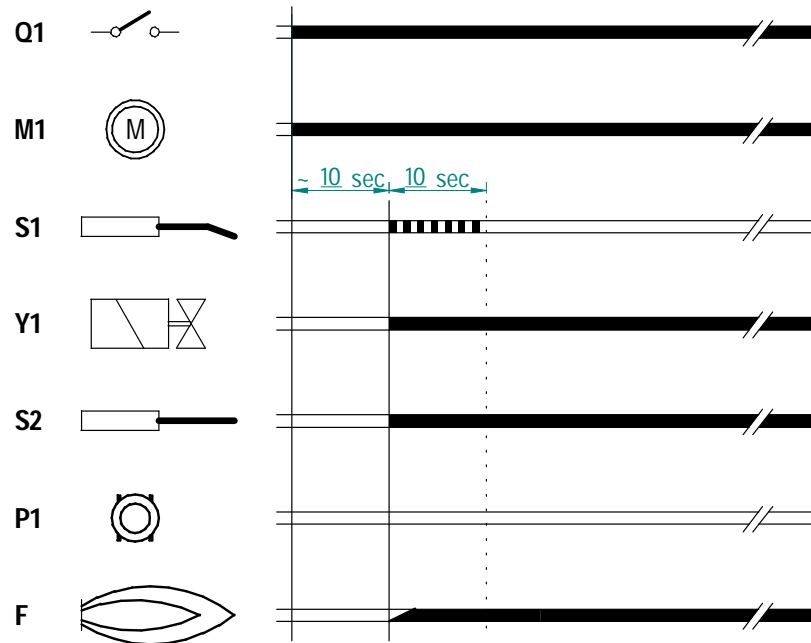
Operational Sequence



M1	MOTOR
S1	IGNITION ELECTRODE
G1	GAS VALVE
Y1	RELAY
S2	FLAME SENSOR
F	FLAME SIGNAL

KID 60/80 AU

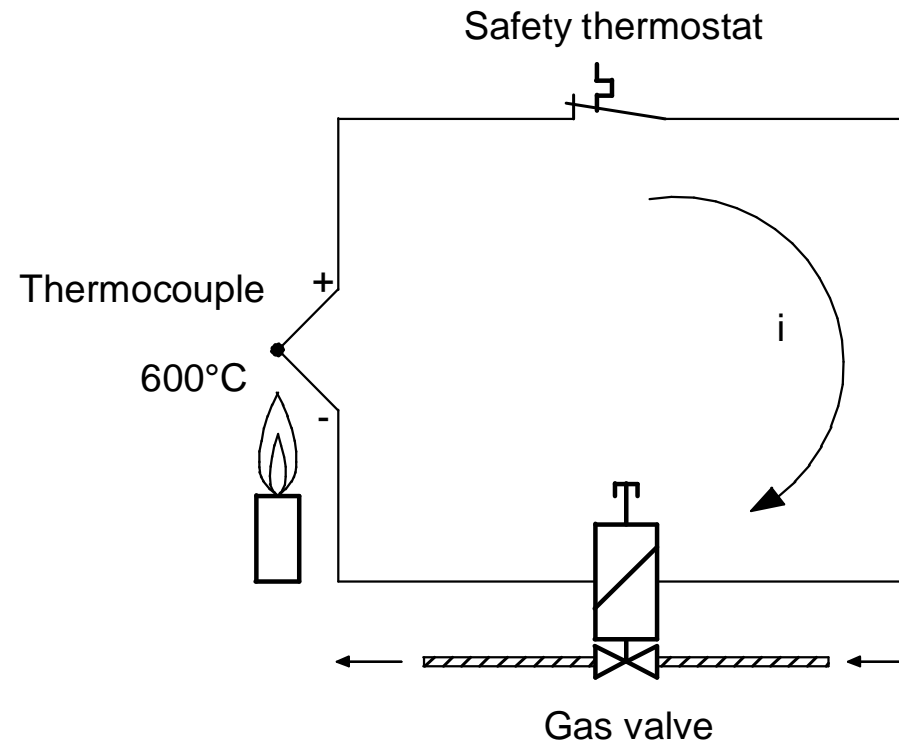
Operational Sequence



Q1	SWITCH
M1	MOTOR
S1	IGNITION ELECTRODE
Y1	SOLENOID VALVE
S2	FLAME SENSOR
P1	RESET BUTTON
F	FLAME SIGNAL

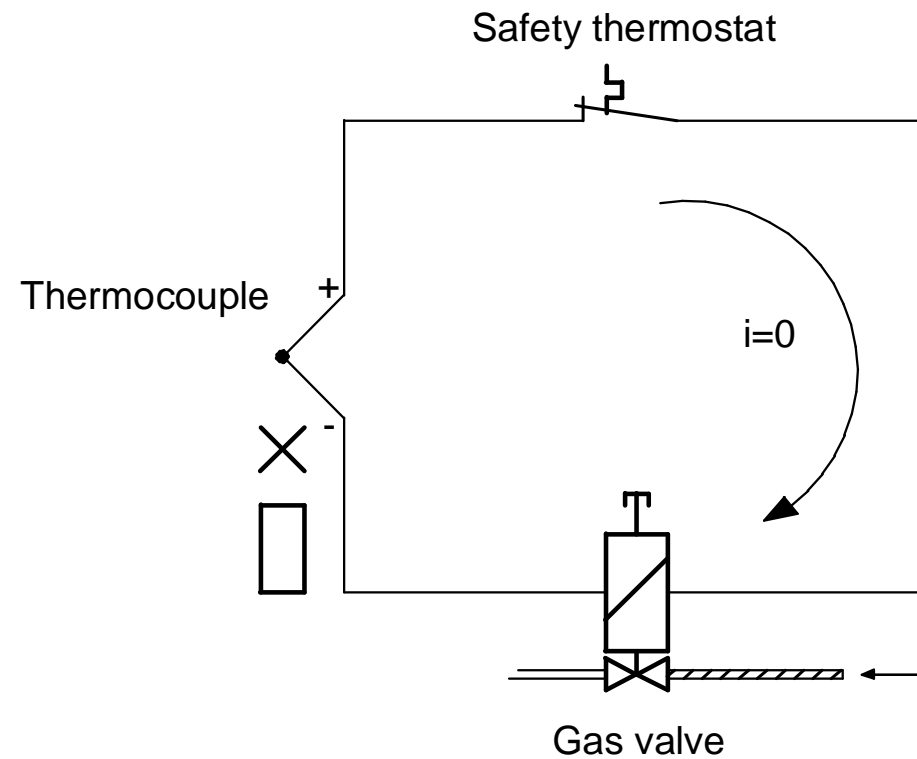
Flame Control Circuit (manual ignition models)

FLAME ON



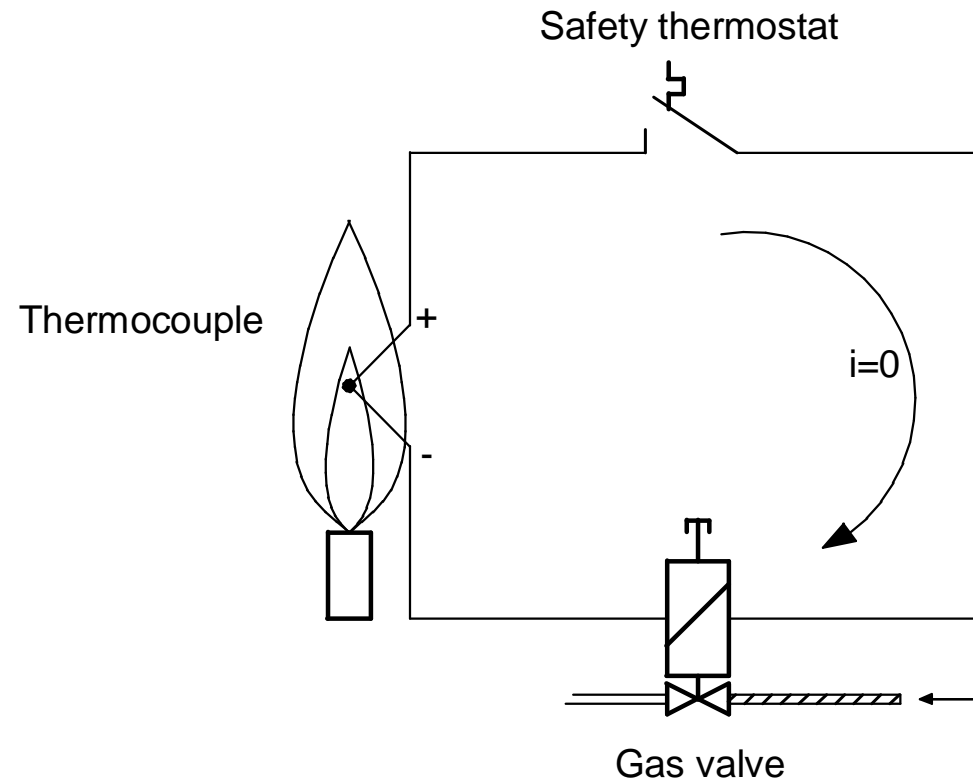
Flame Control Circuit (manual ignition models)

FLAME OFF

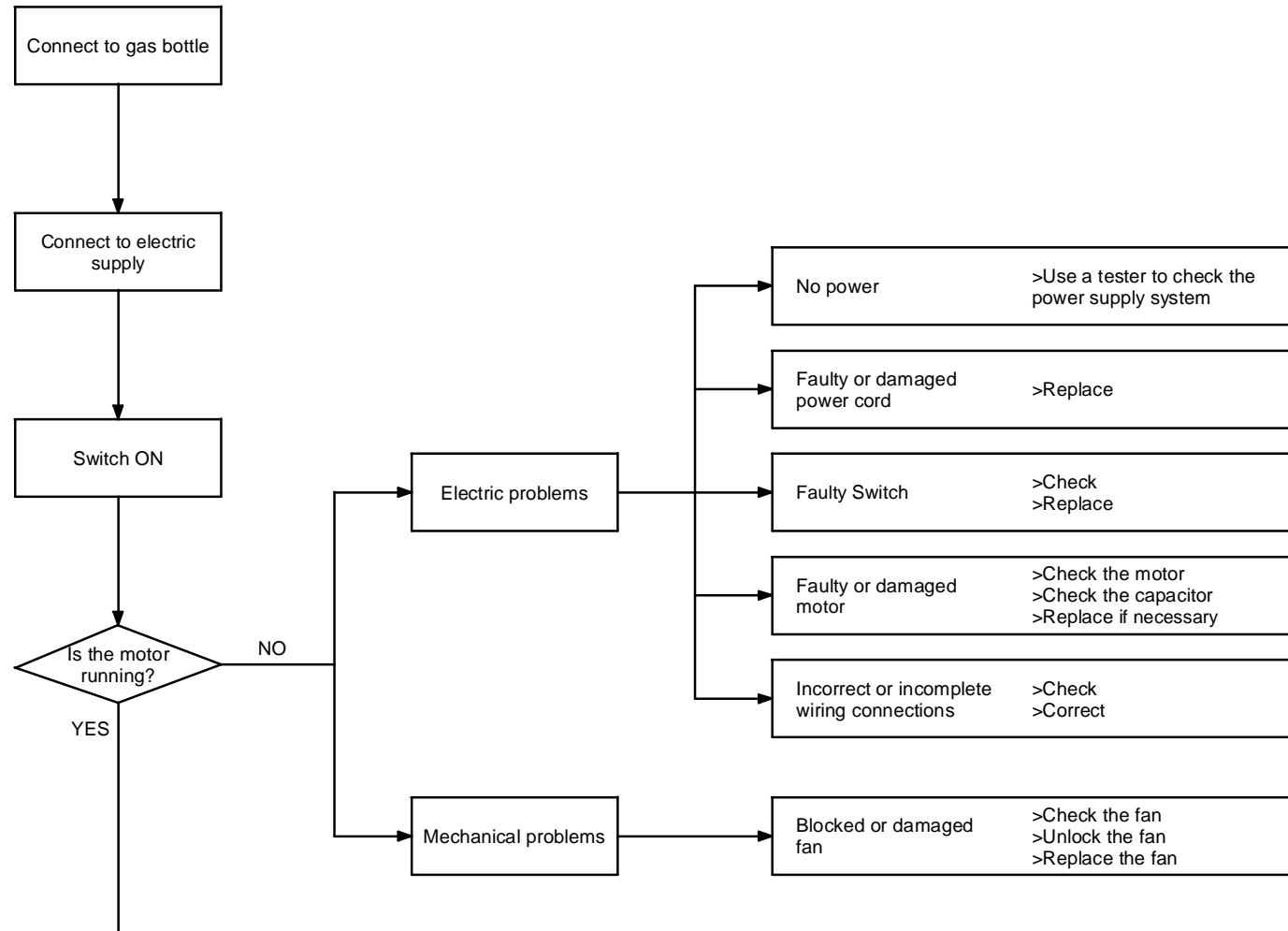


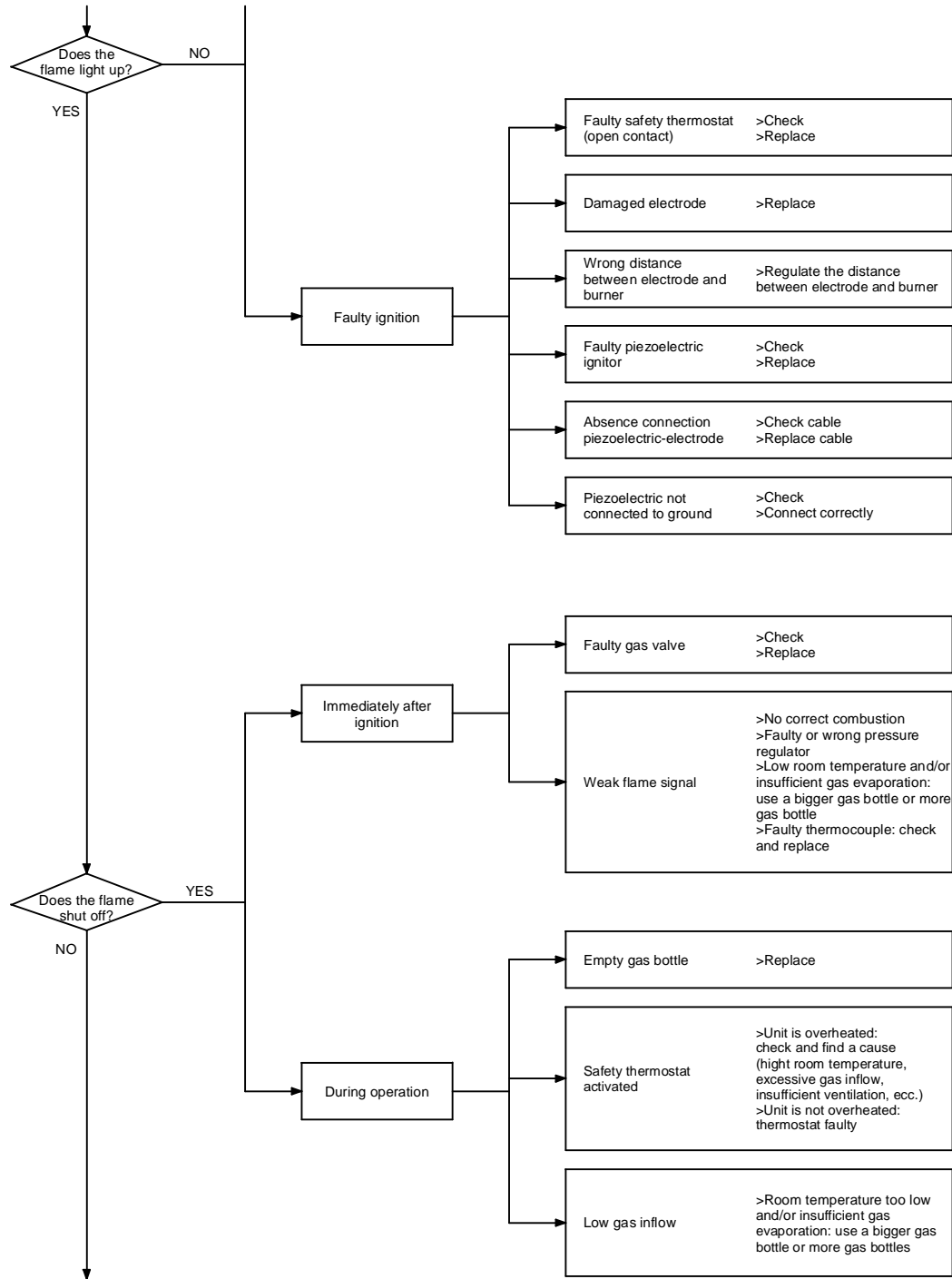
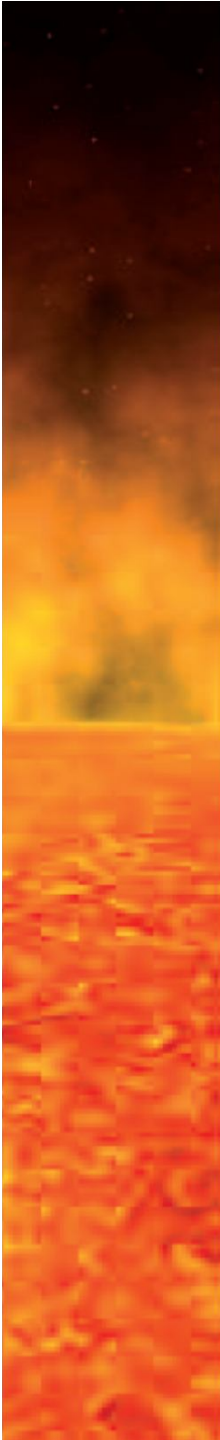
Flame Control Circuit (manual ignition models)

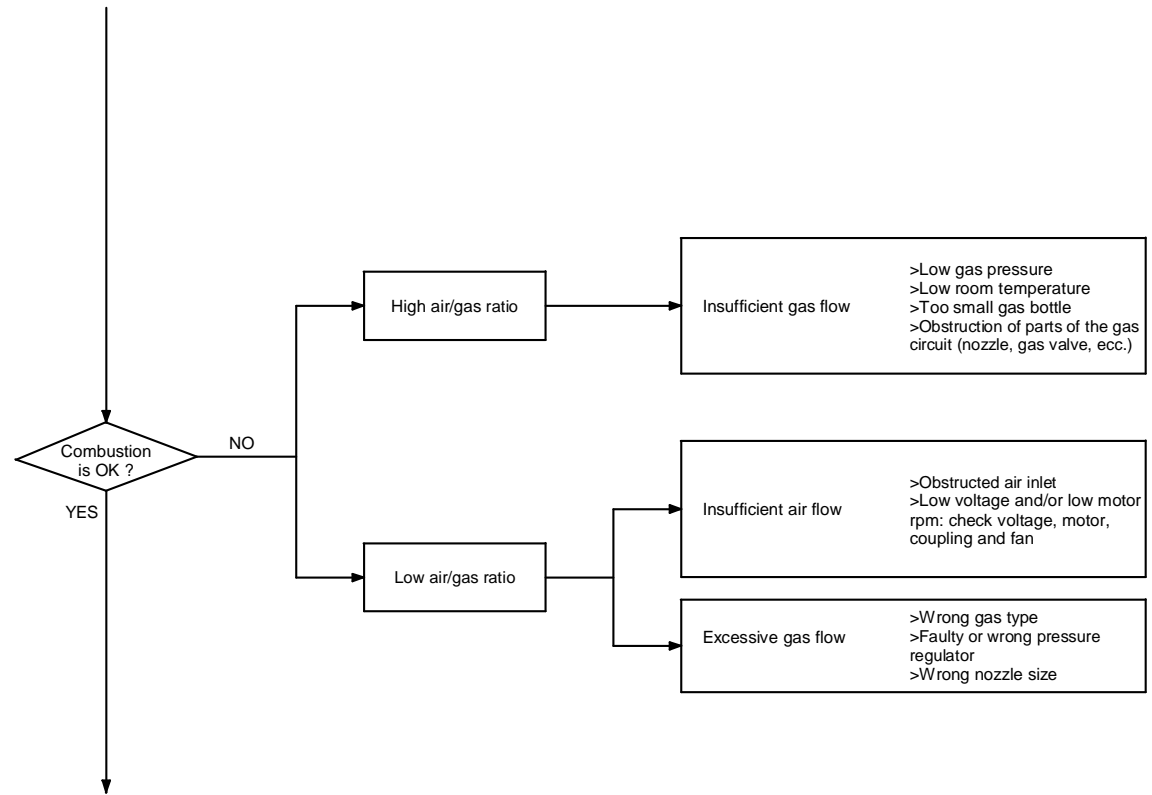
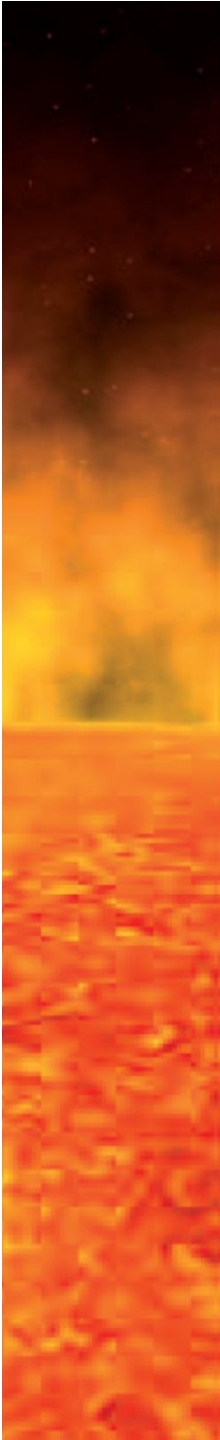
OVERHEATING



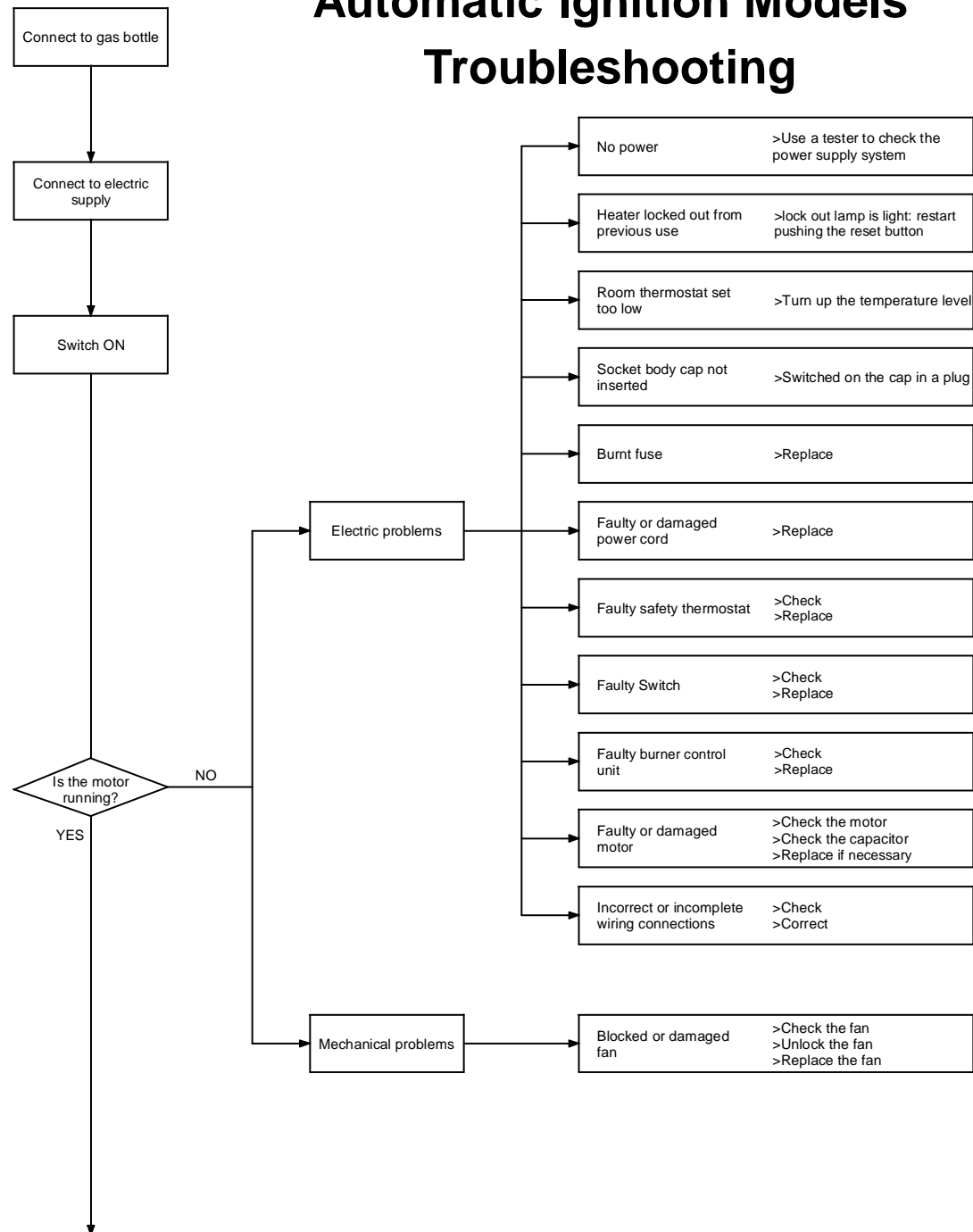
Manual Ignition Models Troubleshooting

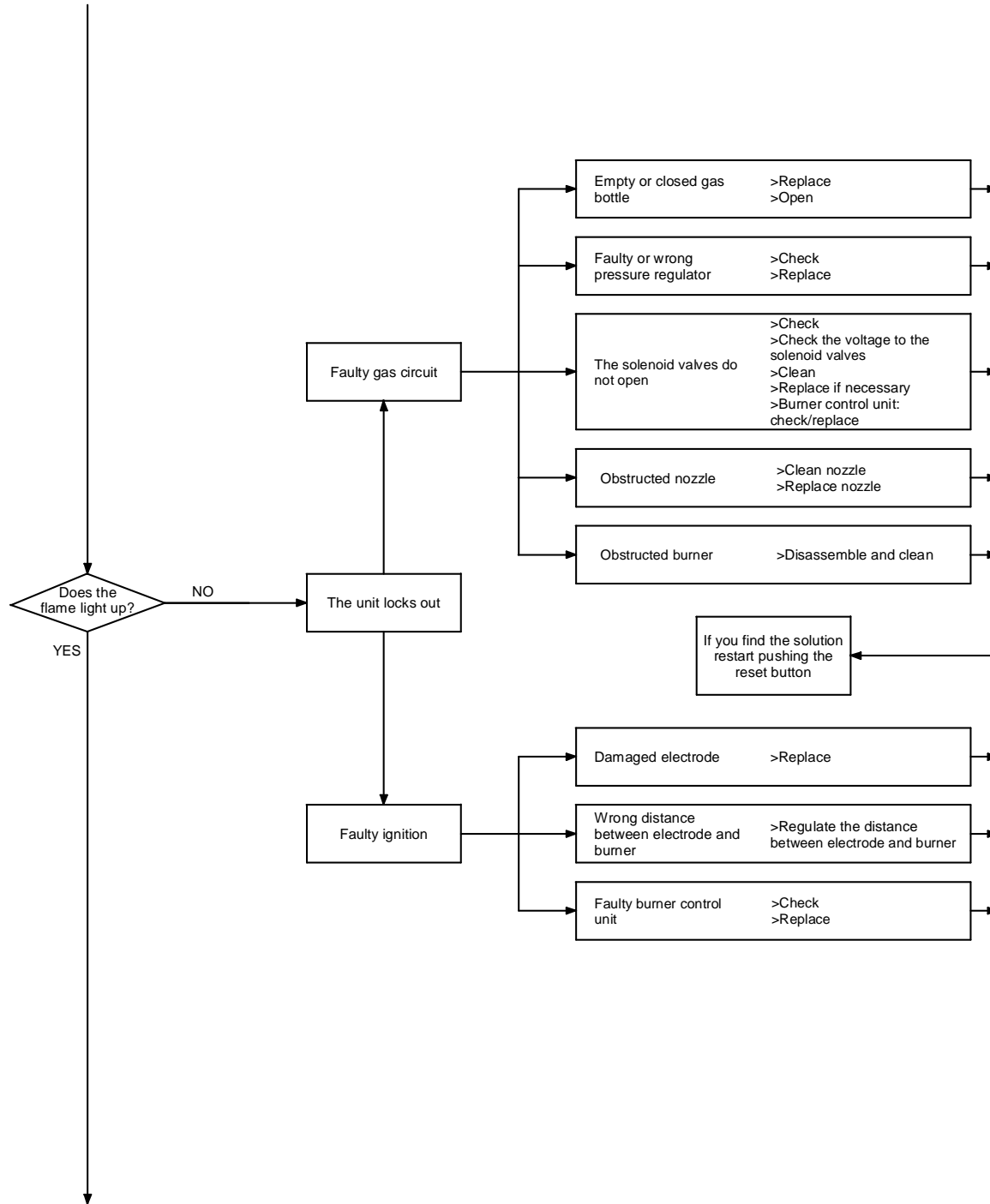
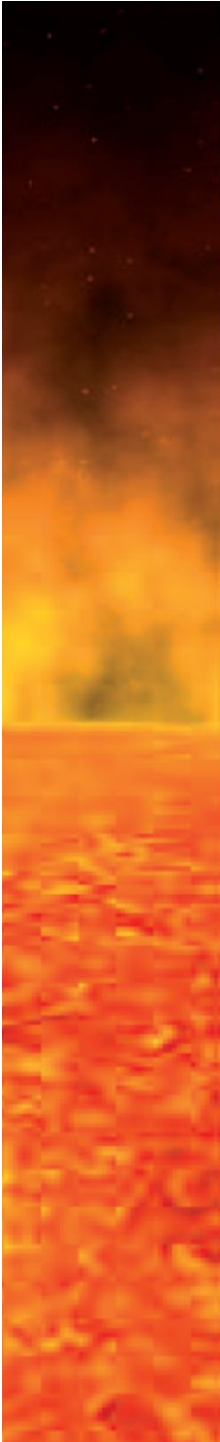


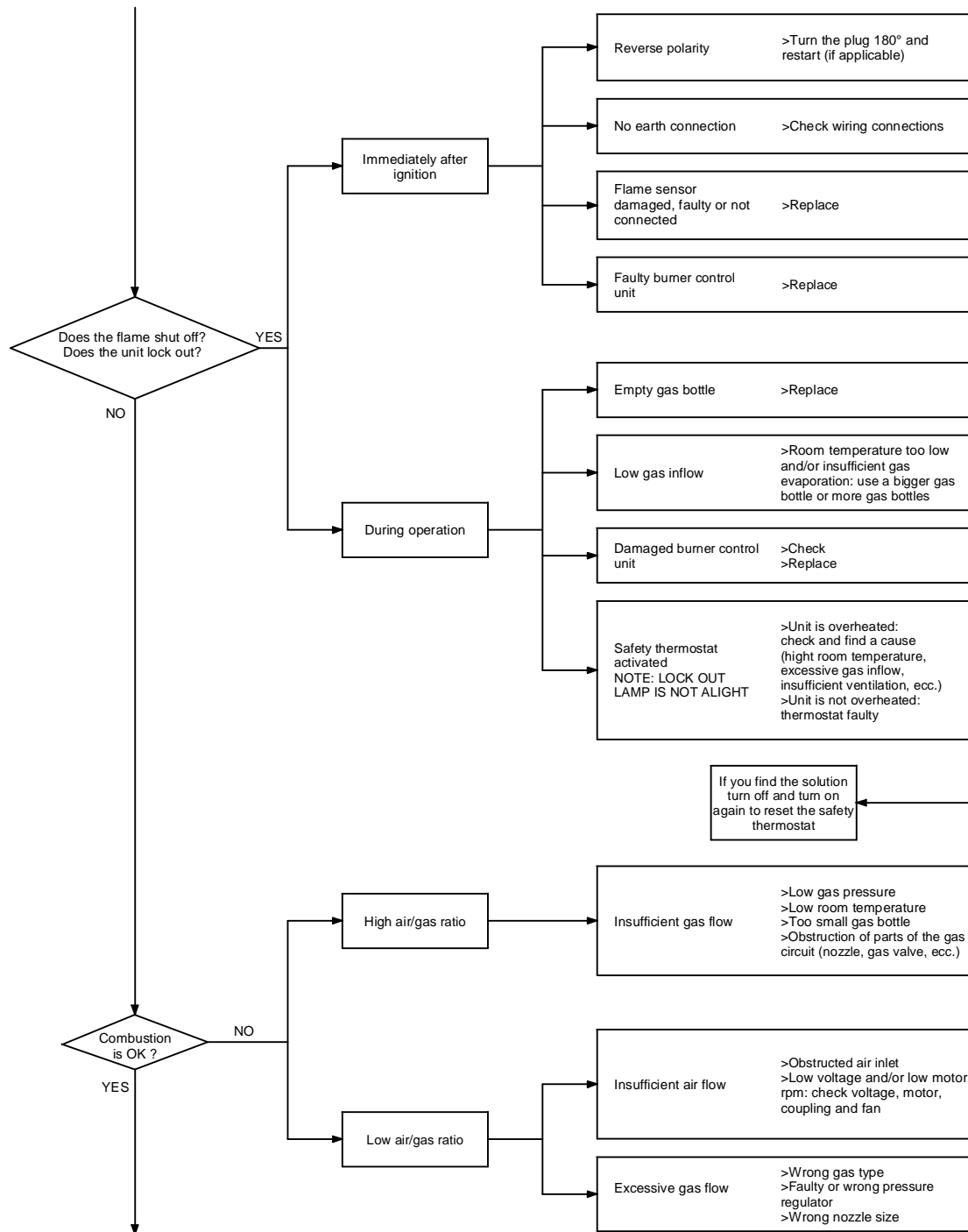
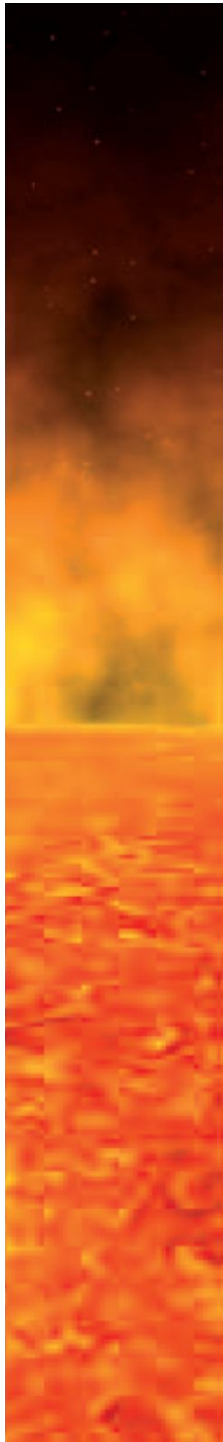




Automatic Ignition Models Troubleshooting







Technical Specifications

MODEL MODELE	KID 10 MU	KID 15 MU	KID 30 MU	KID 40 MU	KID 60 AU	KID 80 AU
INPUT PUISSANCE THERMIQUE (BTU/h)	34500	49600	106500	148400	115,000 – 200,00 0	225,000 – 280,00 0
DEBIT D'AIR AIRFLOW RATE (ft ³ /min)	180	180	440	550	1062	1445
FUEL CONSUMPTION CONSOMMATION GAZ (lb/h)	1.72	2.49	5.42	7.56	5.9 – 10.2	11.4 – 14.4
MINIMUM AMBIENT TEMPERATURE TEMPERATURE AMBIANTE MINIMALE (°F)	18	18	18	18	18	18
IGNITION SYSTEM SYSTEME D'ALLUMAGE	Manual	Manual	Continuous Spark	Continuous Spark	Electronic Ignition	Electronic Ignition
POWER RATING PUISSANCE ELECTRIQUE (HP)	1/12	1/12	1/8	1/8	1/8	1/8
GAS SUPPLY PRESSURE PRESSION AU BRULEUR (psi)	4.4	4.4	21.8	29	29	29
FLAME CONTROL SYSTEME DE CONTRÔLE FLAMME	Thermocouple controll ed gas valve	Thermocouple controll ed gas valve	Thermocouple controll ed gas valve	Thermocouple controll ed gas valve	Ionization sensor	Ionization sensor