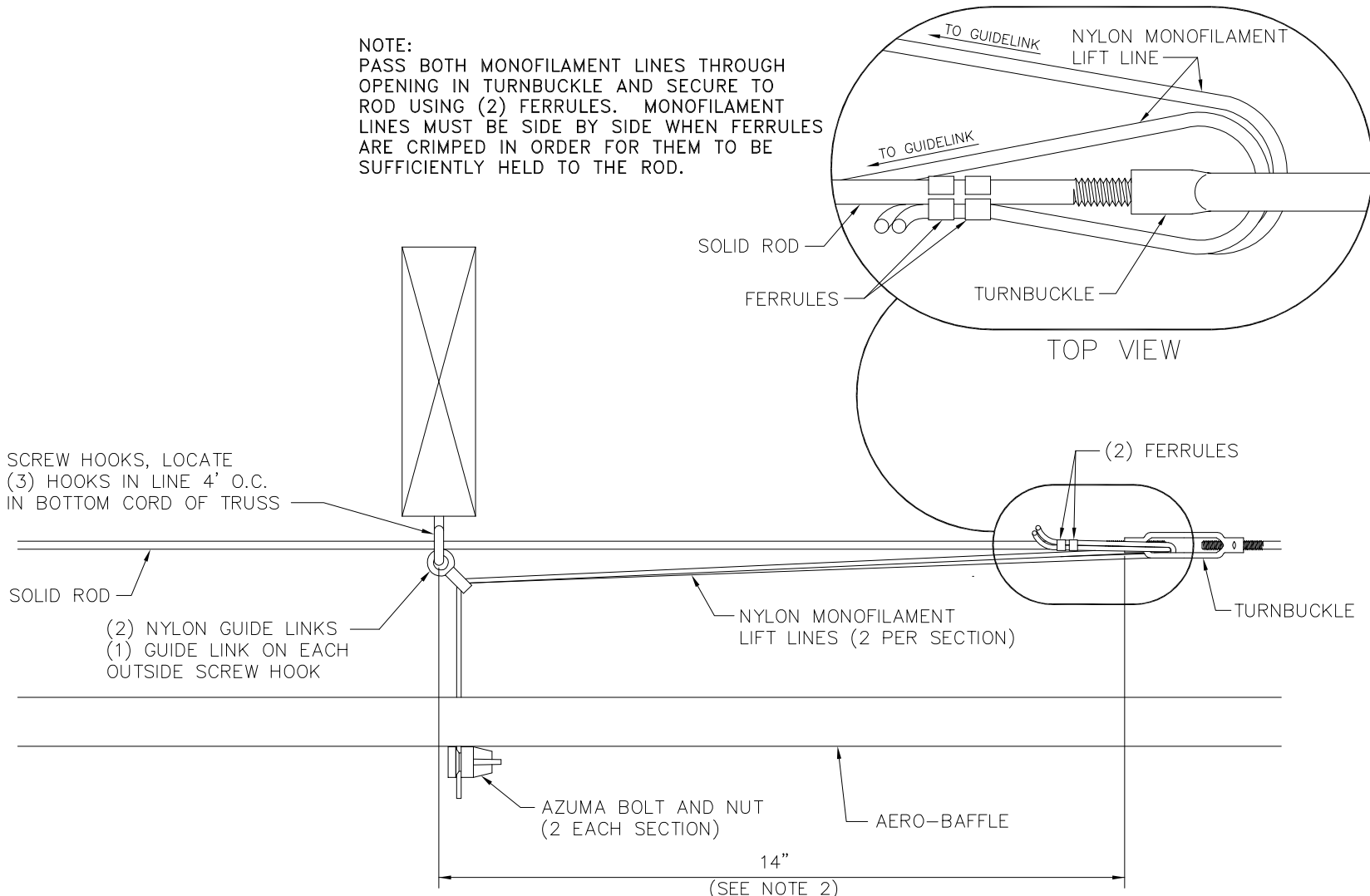


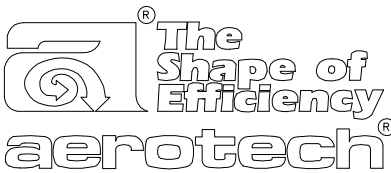
NOTE:
 PASS BOTH MONOFILAMENT LINES THROUGH
 OPENING IN TURNBUCKLE AND SECURE TO
 ROD USING (2) FERRULES. MONOFILAMENT
 LINES MUST BE SIDE BY SIDE WHEN FERRULES
 ARE CRIMPED IN ORDER FOR THEM TO BE
 SUFFICIENTLY HELD TO THE ROD.



- NOTES:
1. INITIAL STARTING POSITION IS WITH BAFFLE FULLY CLOSED.
 2. POSITION TURNBUCKLES 4' O.C., 14" FROM SCREW HOOKS IN DIRECTION OF ACTUATOR OR WINCH.

DIRECTION OF ACTUATOR
 OR WINCH →

CP4RA-C

 AEROTECH, INC. Lansing, MI 48906	DATE: 3-7-91	CP4RA-C ADJUSTMENT PACKAGE INSTALLATION DETAIL	
	SCALE: NTS		
DRAWN BY: MDR	REVISIONS	J.N. 039 DRAWING NO.: IB-91-044	
CHK'D BY: RLD			
FILE: IB91-044.DWG			