

Each Kit includes:

- 1 - Enclosure with Potentiometer
- 1 - Lift Line
- 1 - Azuma Bolt & Nut
- 1 - $\frac{3}{16}$ " Cable Clamp

INSTALLATION INSTRUCTIONS



- 1) Mount the PTPL-5K box in the immediate area of actuator. The PTPL box should be oriented so the potentiometer cable leaving it does not drag on the side of the hole during opening and closing of the actuator. **See Figure 1.**
- 2) Loop the lift line supplied through the loop in the potentiometer cable and fasten with the blue Azuma bolt and nut. **See Figure 1A.**
- 3) With the actuator fully closed, pull the lift line so that the small metal cable stop on the potentiometer cable exits the PTPL box 1" to 2". Attach the lift line to the baffle main cable using the $\frac{3}{16}$ " cable clamp (provided). **See Figure 1.**

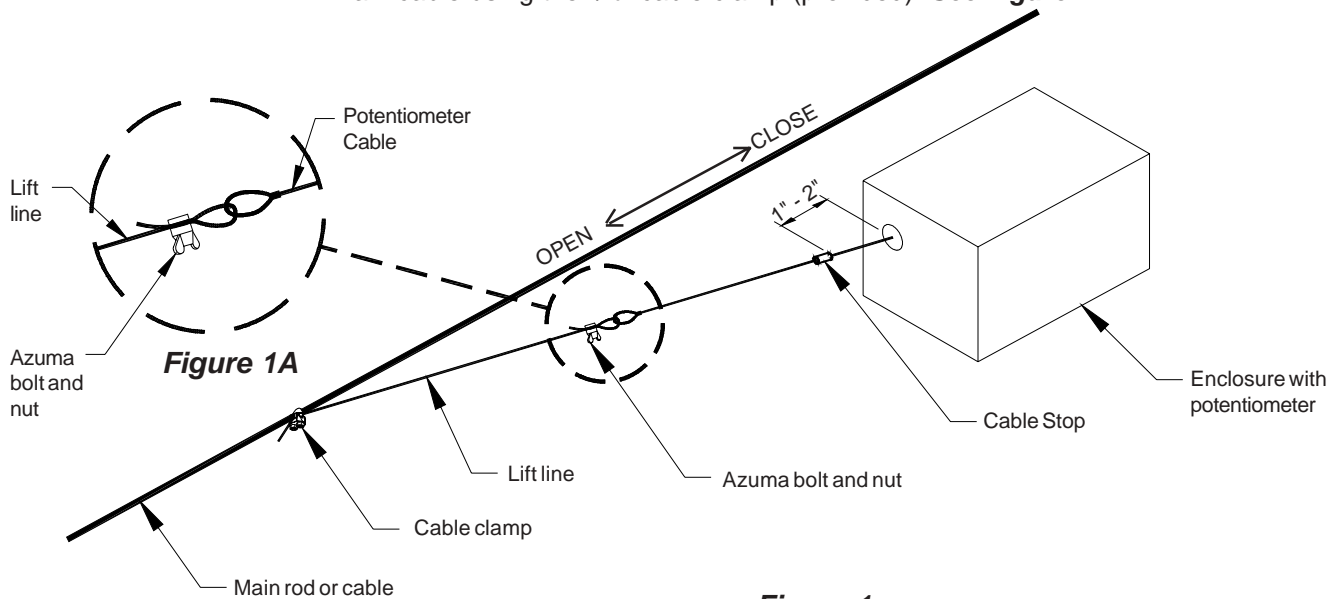


Figure 1

- 4) Attach 3-conductor wire from control to potentiometer terminal block in PTPL. **See Figure 2.**

- 5) PTPL-5K is ready to calibrate according to Controller Owners Manual.

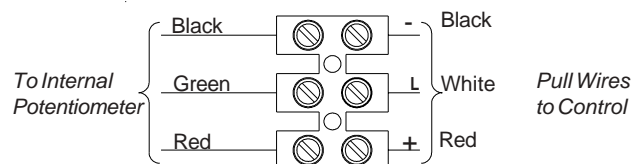


Figure 2