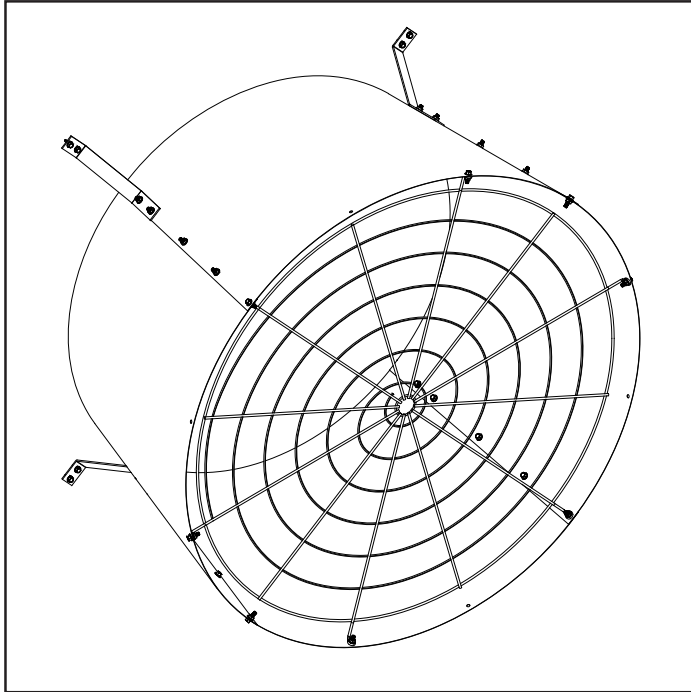


GC Series Discharge Cone

Instruction Manual



GC Series

Discharge Cone

Models: 36GC and 48GC



GC Series Discharge Cone

Manual for use and Maintenance

Thank You:

Thank you for purchasing a Discharge Cone GC Series. Munters equipment is designed to be the highest performing, highest quality equipment you can buy. With the proper installation and maintenance it will provide many years of service.

Please Note:

To achieve maximum performance and insure long life from your Munters product it is essential that it be installed and maintained properly. Please read all instructions carefully before beginning installation.

Warranty:

For Warranty claims information see the "Warranty Claims and Return Policy" form QM1021 available from the Munters Corporation office at 1-800-227-2376 or by e-mail at aghort.info@munters.com.

Conditions and Limitations:

- Products and Systems involved in a warranty claim under the "Warranty Claims and Return Policy" shall have been properly installed, maintained and operated under competent supervision, according to the instructions provided by Aerotech Ventilation Systems, Munters Corporation.
- Malfunction or failure resulting from misuse, abuse, negligence, alteration, accident or lack of proper installation or maintenance shall not be considered a defect under the Warranty.

Index

Chapters	Page
1. Unpacking the Equipment	4
1.1 Parts List	
1.2 Fan Dimensions	
2. Instalation Instructions	5
2.1 Install	
2.2 Installation for 48" Grower Fans built before December 1999	7
2.3 Installation for 36" Grower Fans	9
3. Winterizing	11
4. Exploded View	12

Unpacking the Equipment

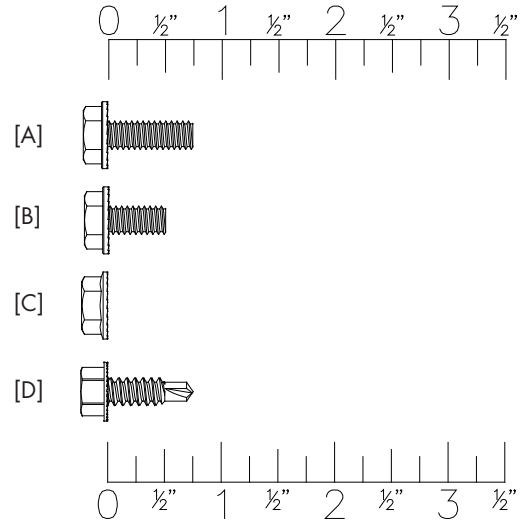
1.

1.1 Parts List

- 4 - Cone Sections (all the same)
- 1 - Guard Section
- 4 - Support Brackets, galvanized
- 1 - Hardware Package as follows:

HP1101- Hardware package

- [A] 12 - 1/4" x 3/4" Flange Head Bolts
- [B] 16 - 1/4" x 1/2" Flange Head Bolts
- [C] 28 - 1/4" Flange Nuts
- [D] 8 - 1/4" x 3/4" TEK Screws

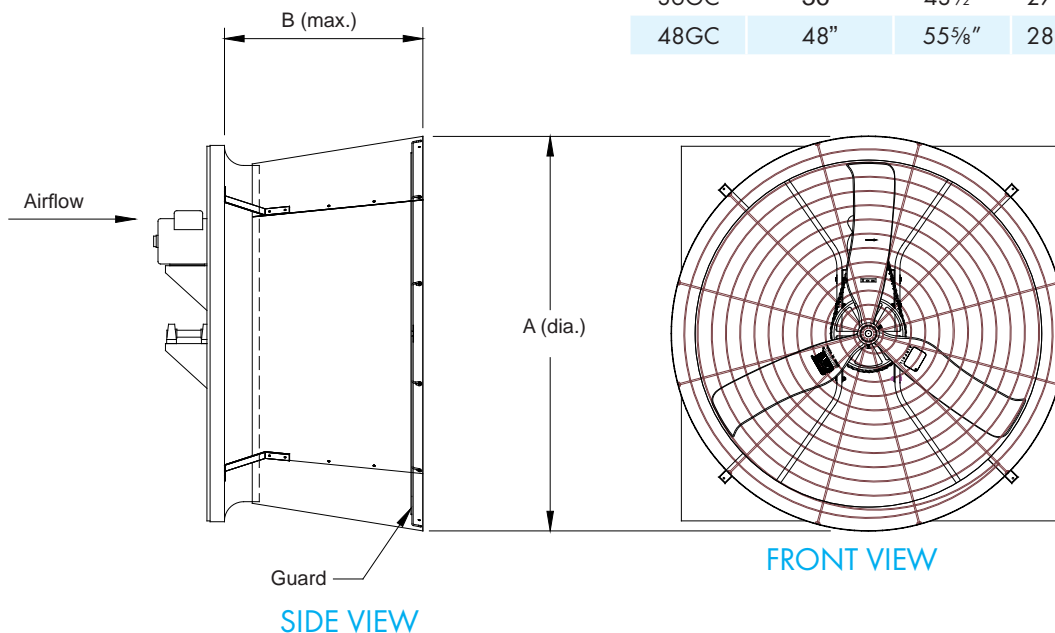


NOTE: This Discharge Cone is designed to mount on the fan outlet for increased airflow and to support an exhaust guard. A shutter or guard must be mounted on the fan inlet.

1.2 Fan Dimensions

Before beginning installation, check the overall condition of the equipment. Remove packing materials, and examine all components for signs of shipping damage. Any shipping damage is the customer's responsibility and should be reported immediately to your freight carrier.

Cat. No.	Fan Dia.	A	B
36GC	36"	43 1/2"	27 3/4"
48GC	48"	55 5/8"	28 1/2"



Installation Instructions

2.

NOTE: The fan must be installed in the wall before proceeding with Discharge Cone installation.

Step 1

Remove packaging from cone and guard sections.

Step 2

Place all (4) cone sections on a flat surface. *See Figure 1.* Place (1) support bracket at each joint.

NOTE: If this cone is to be installed on a 48" Grower fan built before December 20, 1999 proceed to Step 8.

If this cone is to be installed on a 36" Grower fan proceed to Step 16.

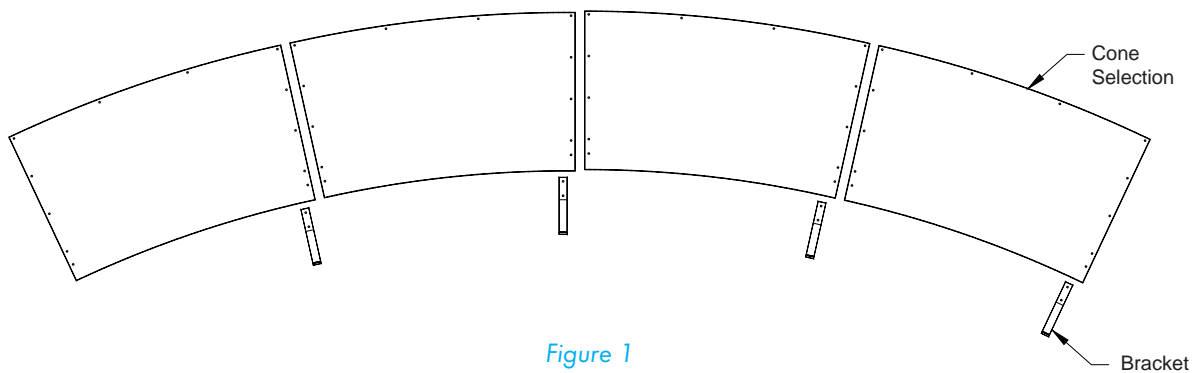


Figure 1

Step 3

Join cone sections using (12) Bolts [B] and Nuts [C]. Bolt should be installed from the outside and go through bracket and two layers of cone. **See Figure 2A.** **DO NOT** tighten. Nuts should be started only one turn onto bolts at this time. **DO NOT** place bolts in outside holes at this time. **See Figure 2B.**

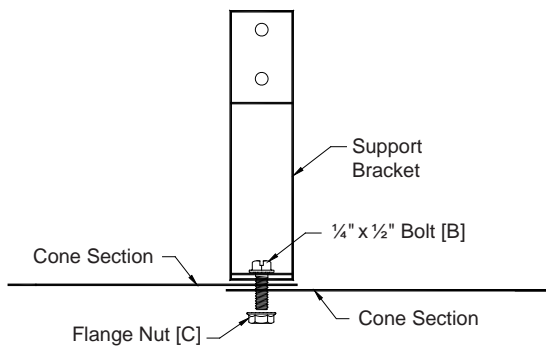


Figure 2A

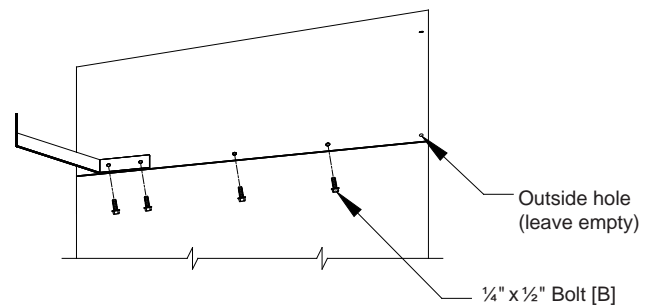


Figure 2B

Installation Instructions

2.

2.1 INSTALL

Step 4

Stand cone sections on edge and curl ends around until they meet, forming a round cone. The support brackets should be on the outside of cone. Join ends using remaining (4) bolts [B] and nuts [C]. Tighten all bolts fully.

Step 5

Install cone on fan. Two people are usually required to do this. Cone should slide over fan outlet approximately 1 1/2". After cone is on, secure it with (2) screws [D] through each support bracket. [See Figure 3.](#)

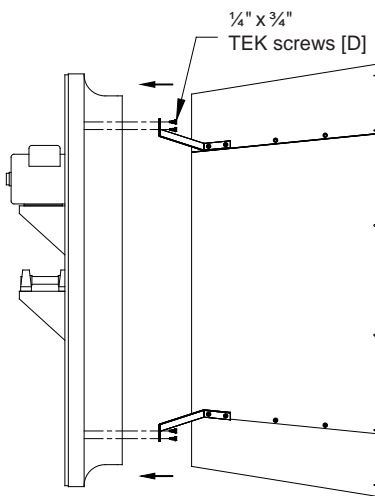


Figure 3

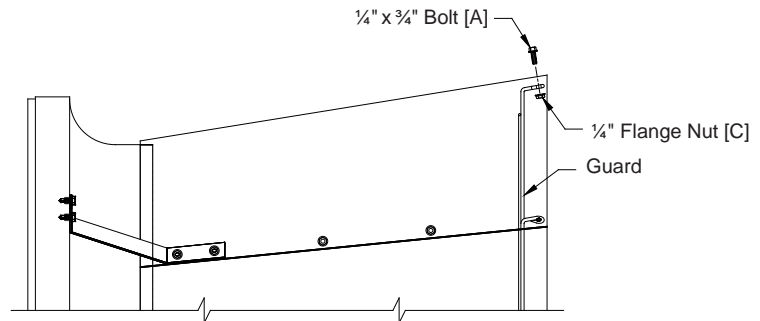


Figure 4

Step 6A

For 36" cone, insert guard into cone with the eyelets facing you and install guard with (6) Bolts [A] and Nuts [C]. Using bolts [A] and Nuts [C], fasten remaining cone section joints. [See Figure 4.](#)

Step 6B

For 48" cone, insert guard into cone with the guard eyelets facing you. Make sure each eyelet lines up with a hole in the cone sections and install with (12) Bolts [A] and Nuts [C]. [See Figure 4.](#)

Step 7

Assembly is now complete. For Winter Weather Protection [continue to page 11.](#)

2.2 INSTALLATION FOR 48" GROWER FANS BUILT BEFORE DECEMBER 1999

Step 8

Join cone sections using (12) Bolts [B] and Nuts [C]. Bolt should be installed from the outside and go through two layers of cone. See Figure 5. DO NOT tighten. Nuts should be started only one turn onto bolts at this time. DO NOT place bolts in outside hole at this time.

Step 9

Stand cone sections on edge and curl ends around until they meet, forming a round cone. Join ends using remaining (4) Bolts [B] and Nuts [C].

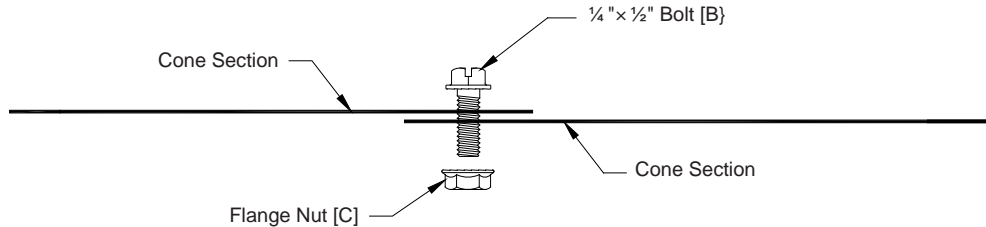


Figure 5

Step 10

To properly attach support brackets to cone, new holes will need to be drilled in cone at each joint. Measure from back edge of cone, mark and drill new 1/4" diameter holes in-line with existing holes, See Figure 6.

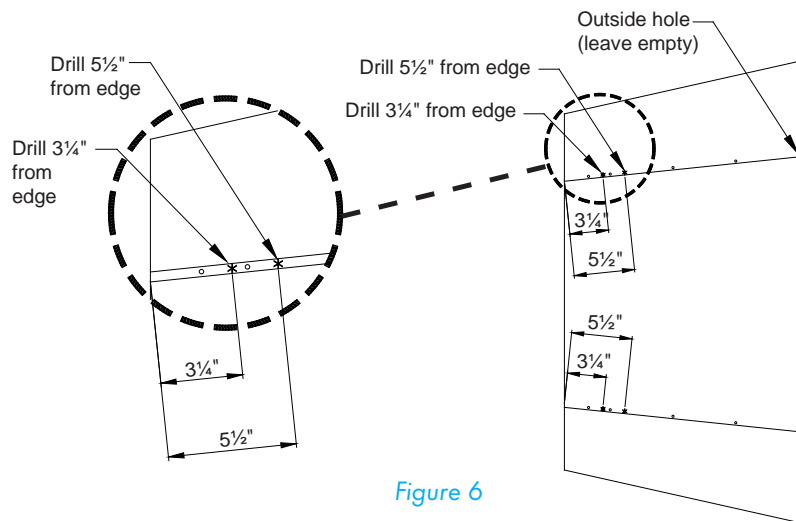


Figure 6

Step 11

Remove the two cone section bolts nearest to the new holes. See Figure 6. Attach the support bracket to cone using the 2 new holes and the 2 bolts just removed. See Figure 7.

Step 12

Install the cone on the orifice with the support brackets installed. Slide top of cone on orifice 1", work both sides of cone onto fan starting at the top, working to the bottom. NOTE: Be careful not to slide the cone on too far on the orifice during installation.

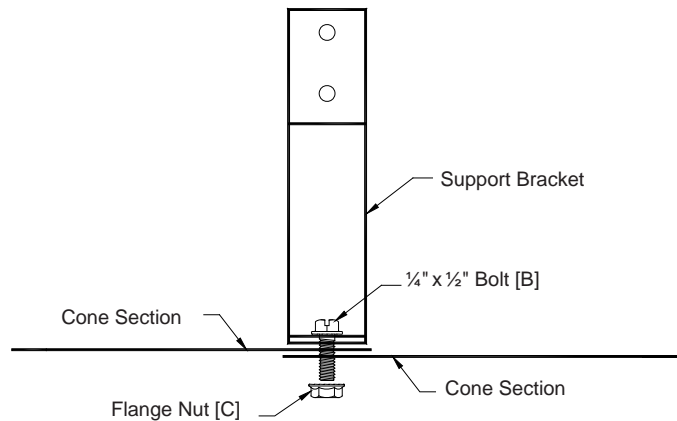


Figure 7

Step 13

Attach support brackets to orifice using the (2) Screws [D] through each support bracket. See Figure 8.

Step 14

Tighten all bolts.

Step 15

Insert guard into cone with the guard eyelets facing you. Make sure each eyelet lines up with a hole in the cone sections, and install with (12) Bolts [A] and Nuts[C]. See Figure 9. Assembly is now complete.

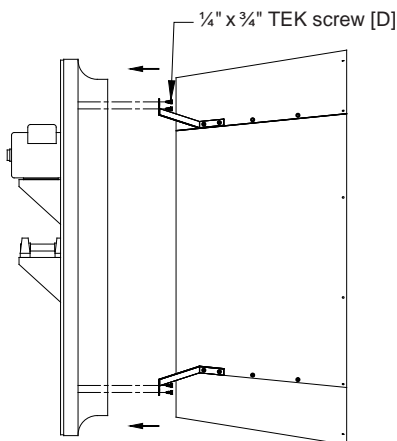


Figure 8

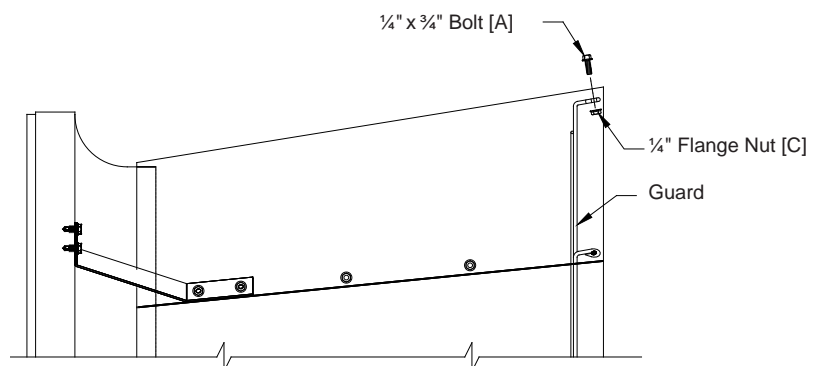


Figure 9

2.3 INSTALLATION FOR 36" GROWER FANS

Step 16

Join cone sections using (12) Bolts [B] and Nuts [C]. Bolt should be installed from the outside and go through two layers of cone. See Figure 10. DO NOT tighten. Nuts should be started only one turn onto bolts at this time. DO NOT place bolts in outside hole at the this time.

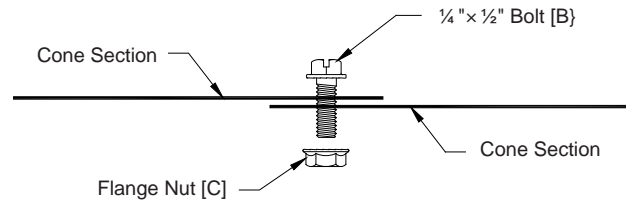


Figure 10

Step 17

Stand cone sections on edge and curl ends around until they meet, forming a round cone. Join ends using remaining (4) Bolts [B] and Nuts [C].

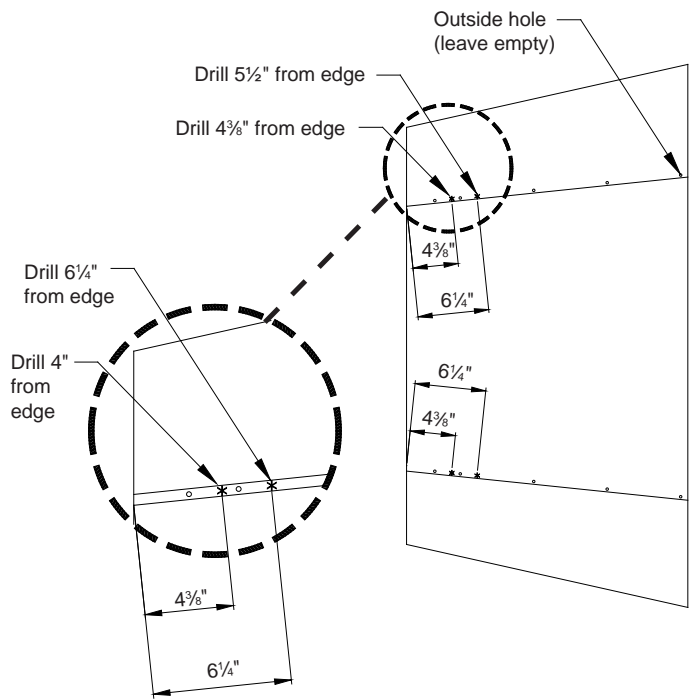


Figure 11

Step 19

Remove the two cone section bolts nearest to the new holes. See Figure 11. Attach the support bracket to cone using the 2 new holes and the 2 bolts just removed. See Figure 12.

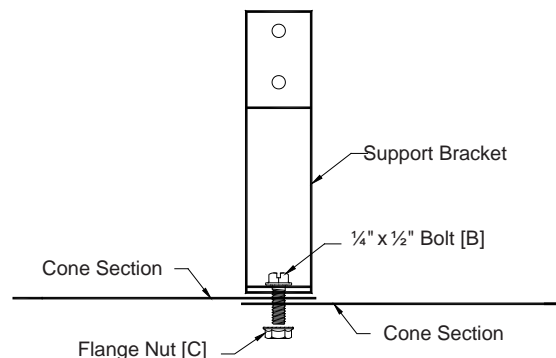


Figure 12

Step 20

Install the cone on the orifice with the support brackets installed. Slide top of cone on orifice 1", work both sides of cone onto fan starting at the top, working to the bottom. NOTE: Be careful not to slide the cone on too far on the orifice during installation.

Step 21

Attach support brackets to orifice using the (2) Screws [D] through each support bracket. See Figure 13.

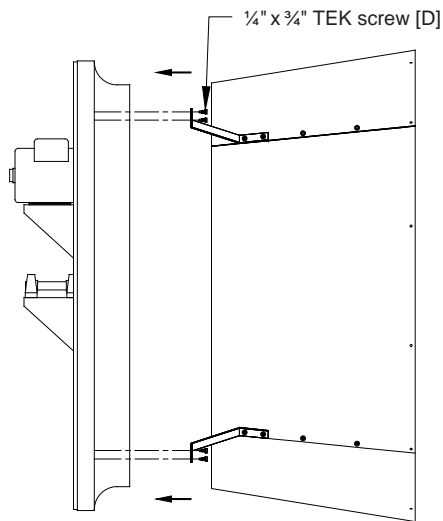


Figure 13

Step 22

Tighten all bolts.

Step 23

Insert guard into cone with the guard eyelets facing you. Make sure each eyelet lines up with a hole in the cone sections, and install with (6) Bolts [A] and Nuts [C]. See Figure 14. Assembly is now complete.

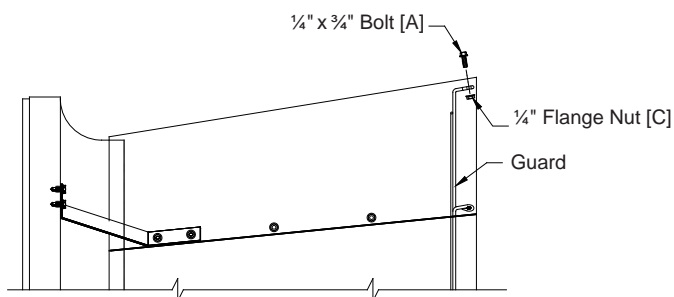


Figure 14

Winter Weather Protection

3.

3. Winter Weather Protection

To prevent cone or fan damage from snow or ice sliding off building roof, weather protection must be provided. A weather shelter may be constructed to cover the entire fan, *See Figure 17*, or snow guards may be placed on the roof, *See Figure 18*.

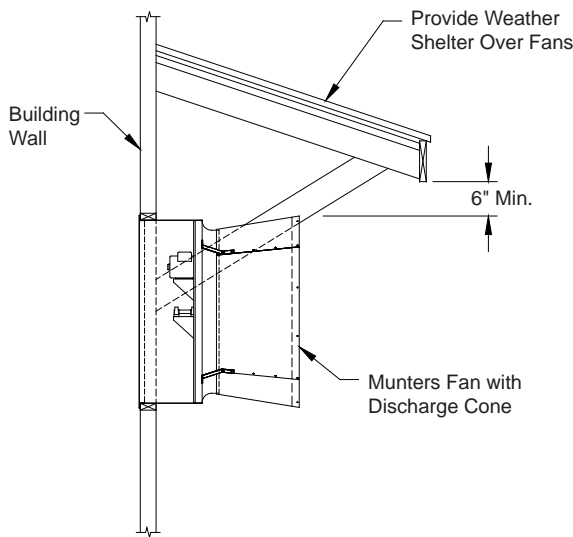


Figure 15

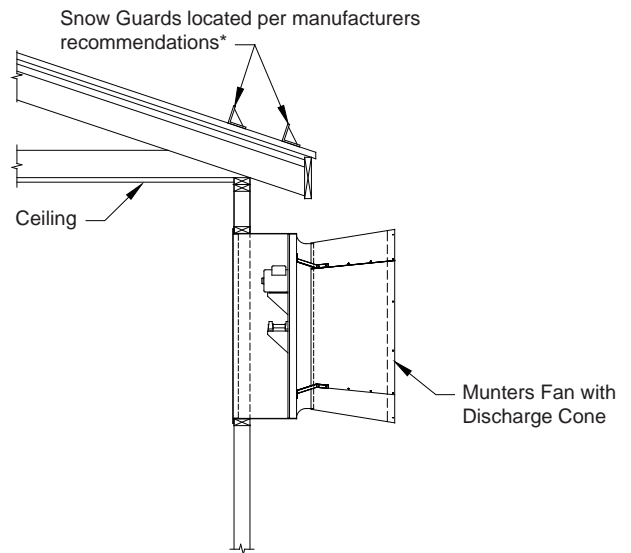


Figure 16

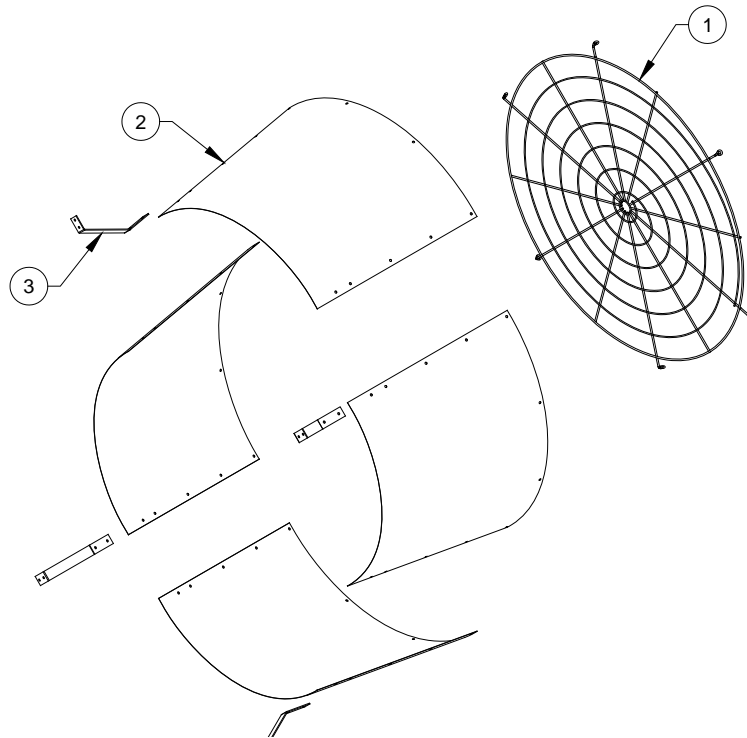
*Snow Guard Suppliers

Company Name	Phone No.	Fax No.	Web Site
Snojax, Inc.	800-766-5291	(717)-697-2452	www.snojax.com
Polar Blox	800-298-4328	(814) 629-9090	www.polarblox.com
LM Curbs	800-284-1412	(903) 759-3598	www.lmcurbs.com
Alpine Snow Guards	888-766-4273	888-766-9994	www.alpinesnowguards.com

⚠ IMPORTANT

Munters Product and System Warranties do not cover cone or fan damage from external sources.

Note: Snow guards are designed to prevent sudden, dangerous snow and ice slides when attached to the building roof according to manufacturers recommendations. The supplier listing above is given as a reference only. Aerotech does not endorse any specific snow guard product and no performance warranty is implied.



Item	Cat. No.	Part Name/Description	Qty.
1	FH1336	FH2648 Cone Guard, Full Circle, PWDCTD, BLK	1
2	FH4236	FH4248 Discharge cone, 1 Section, galvanized	4
3	FH2130	FH2130 Cone support bracket, GC type, galvanized	4

GC Series Discharge Cone is developed and produced by Munters Corporation, Mason, Michigan U.S.A. 1-800-227-2376



Munters Europe AB, Isafjordsgatan 1, P.O. Box 1150, SE-164 26 Kista, Sweden. Phone +46 08 626 63 00, Fax +46 8 754 56 66.

Munters Corporation 4215 Legion Drive Mason, MI 48854-1036 U.S.A. Phone +1 800-227-2376, Fax +1 517-676-7078

www.munters.us/aghort

Australia Munters Pty Limited, Phone +61 2 6025 6422, **Brazil** Munters Brasil Industria e Comercio Ltda, Phone +55 41 3317 5050, **Canada/US** Munters Corporation Mason, MI Phone +1 517 676 7070, **China** Munters Air Treatment Equipment (Beijing) Co. Ltd, Phone +86 10 80 481 121, **Denmark** Munters A/S, Phone +45 9862 3311, **India** Munters India, Phone +91 20 3052 2520, **Indonesia** Munters, Phone +62 818 739 235, **Italy** Munters Italy S.p.A., Chiusavecchia, Phone +39 0183 52 11, **Japan** Munters K.K., Phone +81 3 5970 0021, **Korea** Munters Korea Co. Ltd., Phone +82 2 761 8701, **Mexico** Munters Mexico, Phone +52 818 262 54 00, **Russia** Munters AB, Phone +7 812 448 5740, **Singapore** Munters Pte Ltd., Phone +65 744 6828, **South Africa and Sub-Sahara Countries** Munters (Pty) Ltd., Phone +27 11 997 2000, **Spain** Munters Spain S.A., Phone +34 91 640 09 02, **Sweden** Munters AB, Phone +46 8 626 63 00, **Thailand** Munters Co. Ltd., Phone +66 2 642 2670, **Turkey** Munters Form Endüstri Sistemleri A.Ş, Phone +90 322 231 1338, **USA** Munters Corporation Mason, MI Phone +1 517 676 7070, **Vietnam** Munters Vietnam, Phone +84 8 3825 6838, **Export & Other countries** Munters Italy S.p.A., Chiusavecchia Phone +39 0183 52 11